



Notice of Complete Committee of Adjustment Application and Public Meeting

Meeting Date:	April 16, 2026
Time:	6:00 PM
Location:	County of Brant Council Chambers, 7 Broadway St W, Paris or Online at brant.ca/live

Details of Application:

Application Type:	Consent
Application No:	B1-26-RF
Location:	327 WEST QUARTER TOWNLINE ROAD
Owner:	Gary & Tamara Overbeek
Agent / Applicant:	Owner

This application proposes: a lot line adjustment, with approximately 600 square meters (6,458 squared feet) being severed from agricultural lands legally described as CONCESSION 7 PART LOT 19 and conveyed to 327 West Quarter Townline Road.

Planner: Roxana Flores, Junior Planner, 519-442-7268 Ext. 3065, roxana.flores@brant.ca

To view the application and supporting documents, please contact the Planning Department, 66 Grand River Street North, Paris, Ontario, N3L 2M2 or by email to the Planner noted above.

What is the Purpose of this Meeting?

Pursuant to Section 45 & Section 53 of the Planning Act, Notice is hereby given that County of Brant has received a “Complete Application” for the proposal described above in accordance with the Planning Act.

- A Public Meeting, as required by the Planning Act, will be held by the Committee of Adjustment to provide information and receive public comments on the application outlined above. Based on all the facts presented, the Committee of Adjustment will make a decision on those matters for which they are responsible.

How To Get Involved?

The Committee of Adjustment will review the application, and any other material received in order to make an informed decision on the application.

Written Submissions

- Written submissions must be made to the Planning Division one week prior to the meeting to allow your comments / concerns to be distributed to the members of the Committee of Adjustment.
- Any comments received after the agenda is posted, will be presented to the Committee on the evening of the meeting.

In-person / Virtual Presentations

- Any person may attend the public meeting and make a verbal presentation.
- You can attend in-person, watch virtually at brant.ca/live or participate virtually. If you wish to participate virtually, please contact the Planning Department.

Where do I send written submissions?

To submit written feedback, please send to the Secretary Treasurer, Committee of Adjustment, 66 Grand River Street North, Paris, Ontario, N3L 2M2 or by email at nicole.campbell@brant.ca
Office hours are Monday to Friday, 8:30 am – 4:30 pm
519.44BRANT (519.442.7268) or toll-free 1.855.44BRANT

How can we find out the Decision?

If you wish to be notified of the Decision of the Committee of Adjustment in respect to the proposal, you must make a written request to location/ contact noted above.

Who can appeal a Decision?

The applicant, the Minister or a specified person or public body as per the Planning Act may appeal in respect of applications for Consent or Minor Variance to the Ontario Land Tribunal (OLT). To learn more about your appeal rights, visit brant.ca/planningapplications

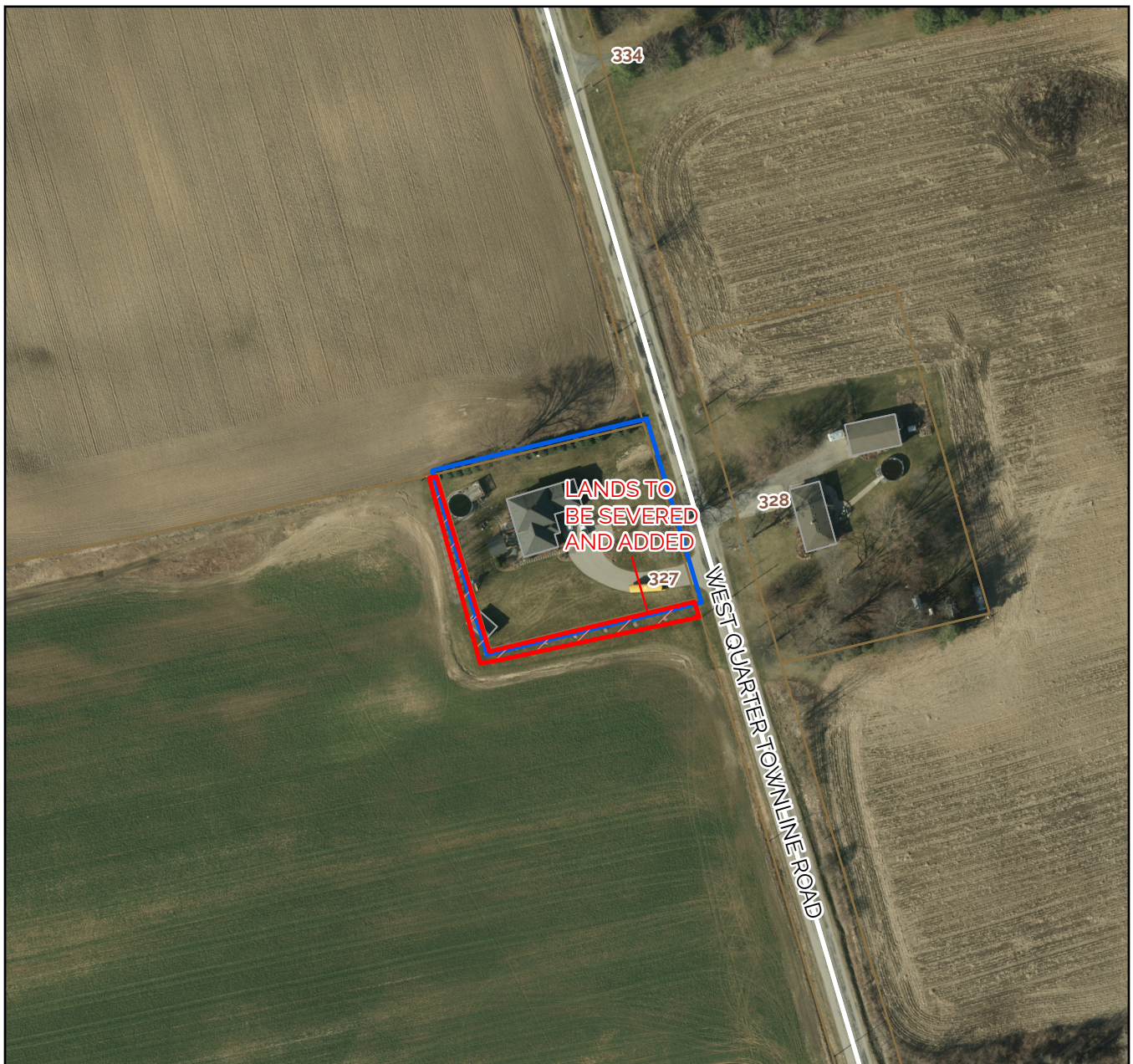
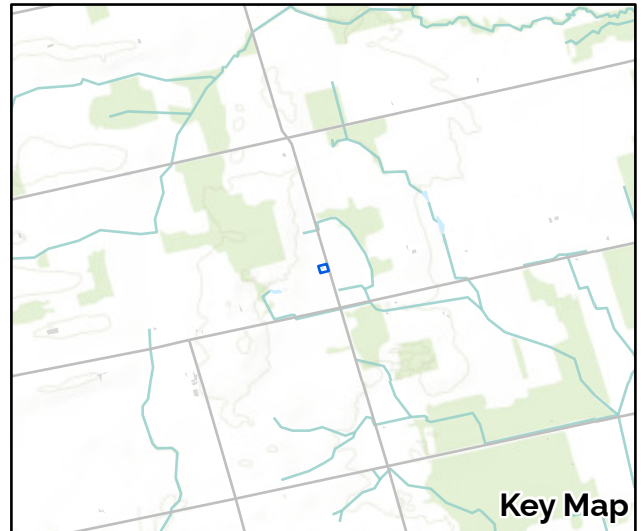
** Note: Under the authority of the Municipal Act, 2001 and in accordance with Ontario's Municipal Freedom of Information and Protection of Privacy Act (MFIPPA), The Corporation of the County of Brant wishes to inform the public that all information including opinions, presentations, reports and documentation provided for or at a Public Meeting, Public Consultation, or other Public Process are considered part of the public record. This information may be posted on the County's website and/or made available to the public upon request.*

MAP 4: AERIAL DETAIL MAP
FILE NUMBER
B1-26-RF

327 WEST QUARTER TOWNLINE ROAD
County of Brant
Ontario



0 15 30 60
Meters
Date Printed: 2026-02-18



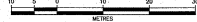
METRIC
DISTANCES AND CO-ORDINATES SHOWN ON
THIS PLAN ARE IN METRES AND CAN BE
CONVERTED TO FEET BY DIVIDING BY 0.3048.

SCHEDULE				
PART	LOT	CONCESSION	PIN	AREA IN HECTARES
1	PART OF 19	7	32002-0206	0.060

PART 1 COMPRISES PART OF PIN 32002-0206.



PLAN OF SURVEY OF
PART OF LOT 19
CONCESSION 7
(GEOGRAPHIC TOWNSHIP OF BURFORD)
COUNTY OF BRANT
SCALE 1:500

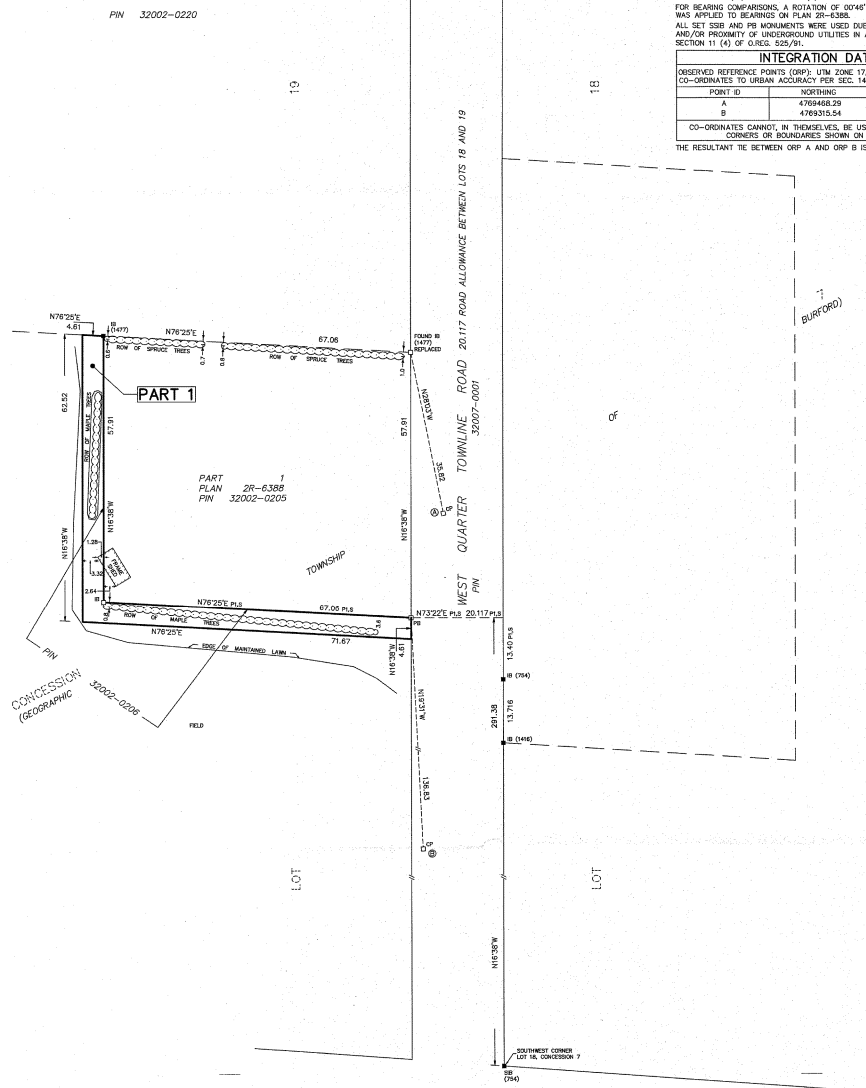


THE INTENDED PLOT SIZE OF THIS PLAN IS 650mm IN WIDTH BY 457mm IN HEIGHT
WHEN PLOTTED AT A SCALE OF 1:500
MCCAULAY, WHITE & MUIR LTD.

NOTE:
BEARINGS ARE UTM GRID, DERIVED FROM OBSERVED REFERENCE POINTS A AND B
BY REAL TIME NETWORK OBSERVATION, UTM ZONE 17, NAD83 (CSRS) (2010).
DISTANCES ARE GROUND AND CAN BE CONVERTED TO GRID BY MULTIPLYING
BY THE COMBINED SCALE FACTOR OF 0.999982.
ALL DIMENSIONS ARE MEASURED UNLESS QUALIFIED.
ALL FENCES ARE "ON LINE" UNLESS TESTS TO THE PROPERTY LINE ARE SHOWN.
ALL PINS ARE (L) UNLESS NOTED (R).
FOR BEARING COMPARISONS, A ROTATION OF 00°45'00" COUNTER-CLOCKWISE
WAS APPLIED TO BEARINGS ON PLAN 2R-6388.
ALL SET BACKS AND PIN MONUMENTS WERE USED DUE TO LACK OF OVERBURDEN
AND/OR PROXIMITY OF UNDERGROUND UTILITIES IN ACCORDANCE WITH
SECTION 11. (4) OF OREG. 525/91.

INTEGRATION DATA			
OBSERVED REFERENCE POINTS (ORP): UTM ZONE 17, NAD83 (CSRS) (2010)			
CO-ORDINATES TO URBAN ACCURACY PER SEC. 14(2) OF O. REG. 216/10.			
POINT ID	NORTHING	EASTING	
A	4769468.29	537925.70	
B	4769315.54	538001.12	

CO-ORDINATES CANNOT, IN THEMSELVES, BE USED TO RE-ESTABLISH
CORNERS OR BOUNDARIES SHOWN ON THIS PLAN.
THE RESULTANT TIE BETWEEN ORP A AND ORP B IS N16°34'W 150.45.



- LEGEND
- SB - STANDARD IRON BAR
 - SSB - SHORT STANDARD IRON BAR
 - IB - IRON BAR
 - OC - CUT CROSS
 - PB - PLASTIC BAR
 - CP - CHURCHIE PIN
 - IP - PLANTED
 - FP - FLAG
 - R - ROUND
 - WT - WITNESS
 - S - SET
 - 400 - L.D. BARNES LIMITED
 - 794 - H.W. WEST O.L.S.
 - 1416 - WEST AND NEUSKA LTD.
 - PI - PLAN 2R-6388

SURVEYOR'S CERTIFICATE

I CERTIFY THAT:
1. THE SURVEY AND PLAN ARE CORRECT AND IN ACCORDANCE WITH
THE SURVEY ACT, THE SURVEYORS ACT AND THE LAND TITLES ACT
AND THE REGULATIONS MADE UNDER THEM.
2. THE SURVEY WAS COMPLETED ON THE 4th DAY OF JULY, 2025.

JULY 17, 2025
JOHN W. MUIR
ONTARIO LAND SURVEYOR

THIS PLAN OF SURVEY RELATES TO AOLS PLAN SUBMISSION FORM NUMBER V-

MacAulay, White & Muir Ltd.	DRAWN: GCS
ONTARIO LAND SURVEYORS - CANADA LAND SURVEYORS	CHECKED: JM
A Member Chartered Institution of 20 Nations Licensed 1864 BEECH ACRE ROAD, SUITE 1, PARKVILLE, ONT. L2R 9T8 303-8688 www.glsam.com	PLAN No. 25-50-229-00