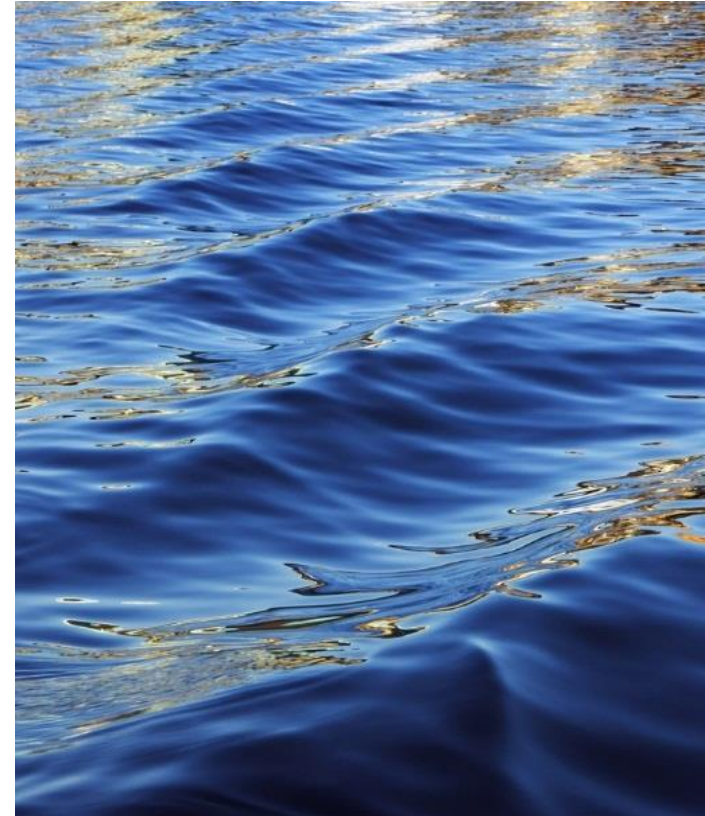




# North of the Nith Master Plan

BWF Delegation, Feb 17 2026



# Brant Waterways Foundation

## Our Vision and Mission

**We envision** a community in which everyone benefits from a connection to our healthy waterways and trails, and works collaboratively to protect and preserve our natural resources.

**Brant Waterways Foundation seeks to** provide leadership, funding assistance and advocacy to projects in Brantford, Brant County and Six Nations of the Grand River that enhance, restore, protect and preserve our natural heritage of the Grand River, its waterways and adjacent lands to provide recreational opportunities, a healthy environment and sustainable use.



# The Ask

County staff have made significant progress towards moving this generational project forward. With that Brant Waterways believes that a greater short-term impact could be seen with the following amendments:

- A review of community led initiatives and their operating models for report back to council no later than June, 2026
- Purposeful inclusion of single-track mountain bike trails within the property
- Pull in parking and North East areas for Phase 1, while deferring the Penman's Pass remediation activities



# Community Led Models

From the project outset, BWF has been a supporter of a community led model for North of the Nith, which would:

- Reduce the financial burden on taxpayers through new grant opportunities and volunteer labour
- Reduce implementation times with iterative rehabilitation, development and construction
- Increase community engagement through volunteer work parties and opportunities for residents to give back



# Single Track Mountain Bike Trails

Our natural spaces offer opportunities to improve both physical and mental well being. These opportunities to reset and reflect often come through recreation, but a gap exists for residents who seek to recreate through mountain biking close to home

Developing these trails would :

- Improve quality of life for residents who are unable to recreate within their own community
- Mitigate much of the environmental impact and risks associated with informal trails
- Improve safety of all recreational users through the development of a purpose-built, managed trail network



# Re-Prioritizing Phases

Brant Waterways purpose is to connect people to healthy waterways and our natural heritage. In the current plan, access via Penman's Pass is going to limit many resident's ability to connect with this property.

Brant Waterways is asking to defer the Penman's Pass remediation (1.3) and pull the proposed gravel parking lot (2.1) into Phase 1.

Doing so would ensure:

- Reduced cost and greater access opportunities for all residents
- A more wholistic view and contiguous trail development starting from the primary entrance
- Earlier assessment and protection of Dunes plant species, remediation of invasives in the Wetlands, and reforestation in the North



## In Closing

Understanding and recognizing that staff have made important steps in the development of the master plan, Brant Waterways is seeking the following amendments:

- A review of community led initiatives and their operating models for report back to council no later than June, 2026
- Purposeful inclusion of single-track mountain bike trails within the property
- Pull in parking and North East areas for Phase 1, while deferring the Penman's Pass remediation activities



# Appendix – Reference Studies

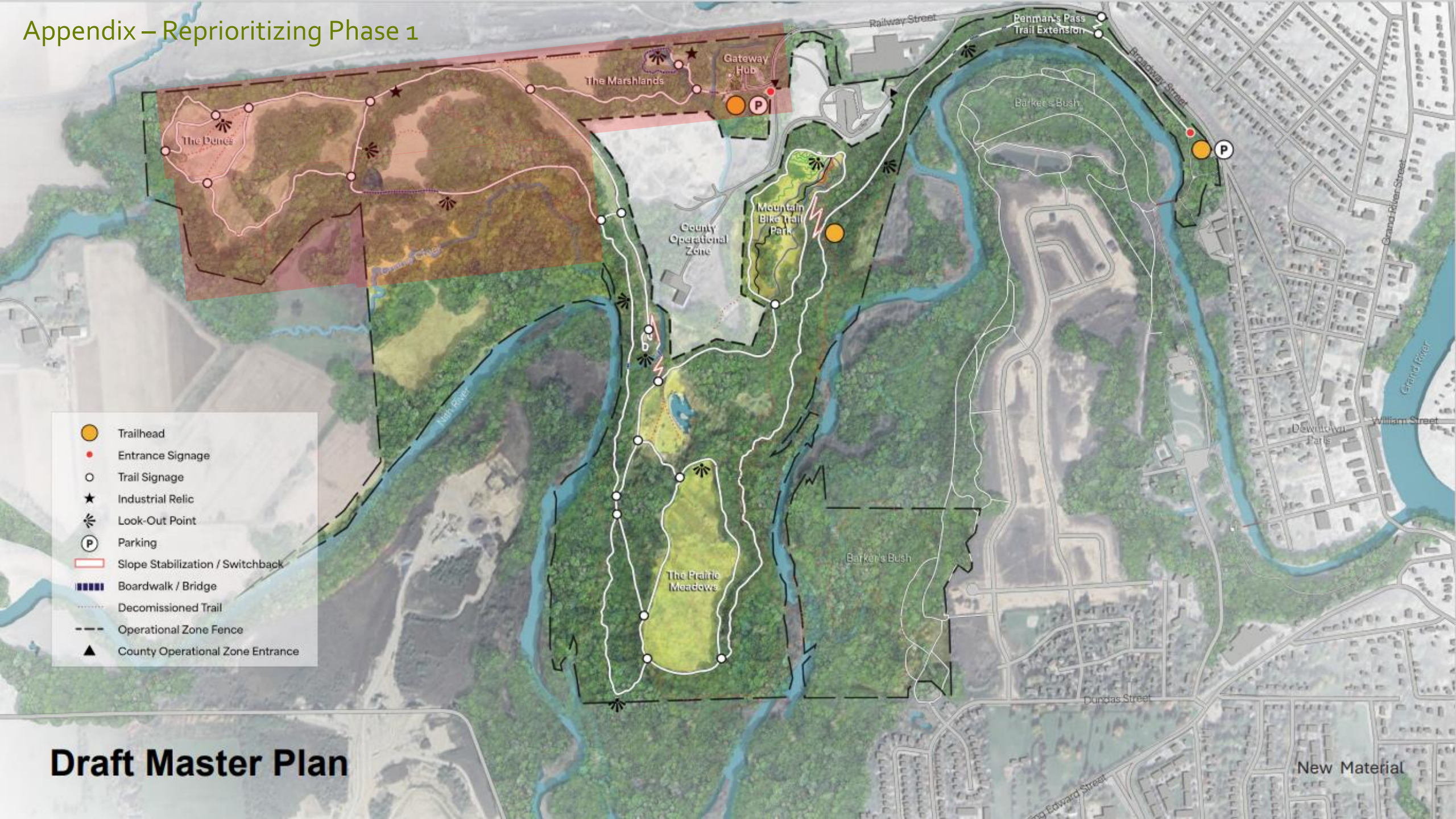
- [Impacts of experimentally applied mountain biking and hiking on vegetation and soil of a deciduous forest](#)
- [Trail degradation caused by mountain biking and hiking: A multi-dimensional analysis](#)
- [New Trust for Public Land Report Highlights Economic Power of Mountain Biking for Rural Communities.](#)

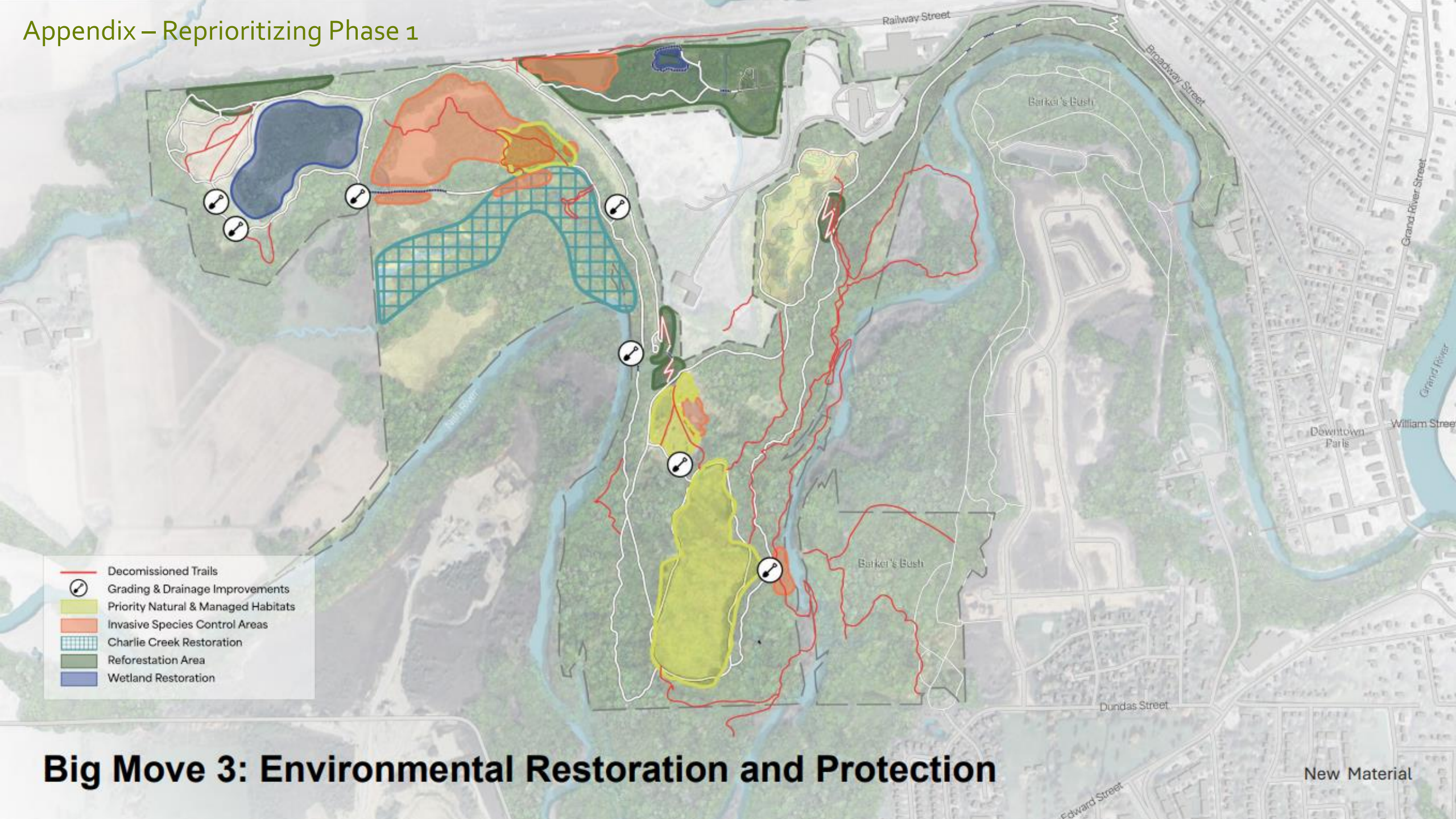
# Appendix – Reprioritizing Phase 1

- Trailhead
- Entrance Signage
- Trail Signage
- ★ Industrial Relic
- ⚡ Look-Out Point
- Ⓟ Parking
- ▭ Slope Stabilization / Switchback
- ▬ Boardwalk / Bridge
- ⋯ Decommissioned Trail
- - - Operational Zone Fence
- ▲ County Operational Zone Entrance

**Draft Master Plan**

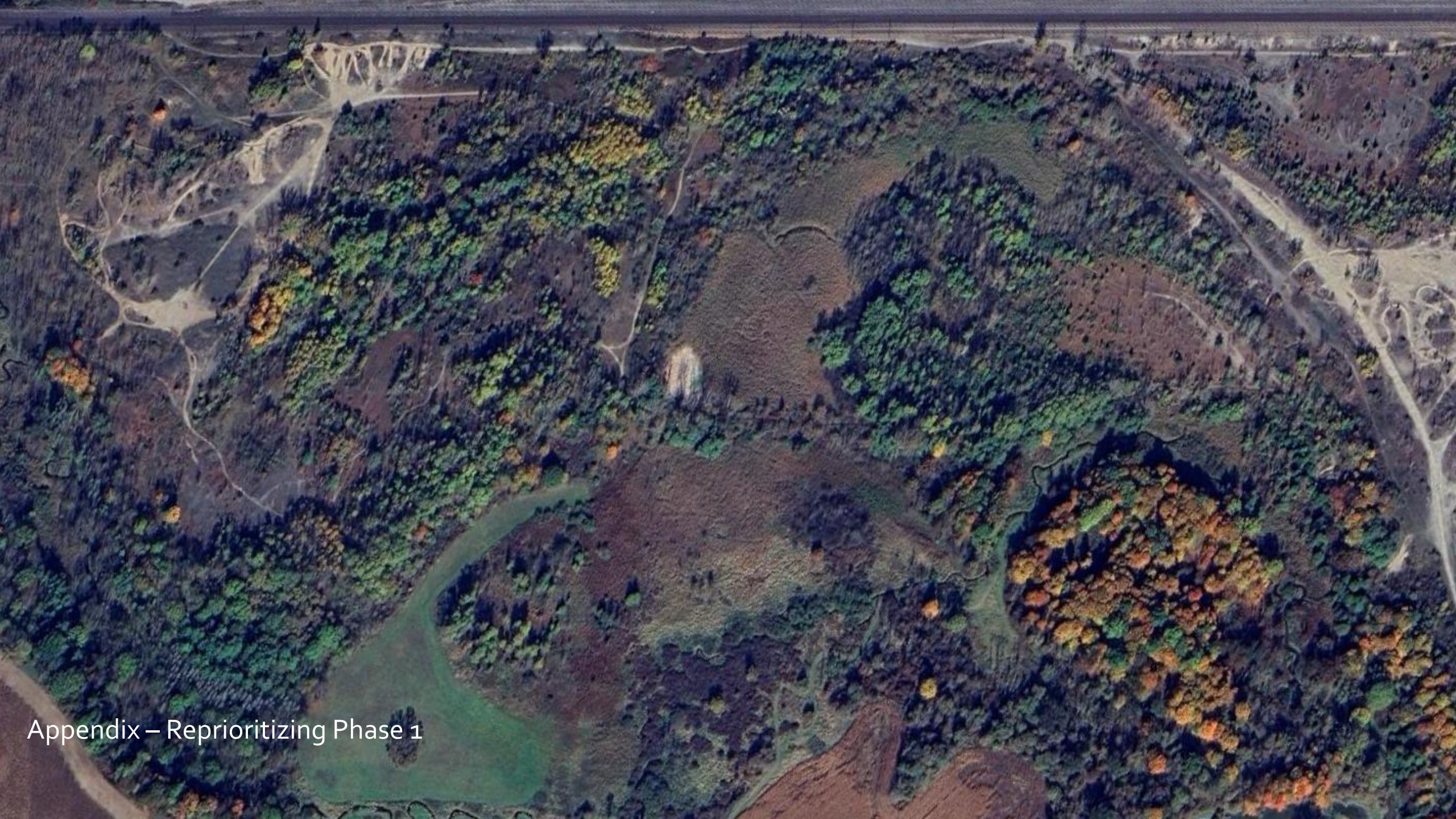
New Material





# Big Move 3: Environmental Restoration and Protection

New Material



Appendix – Reprioritizing Phase 1