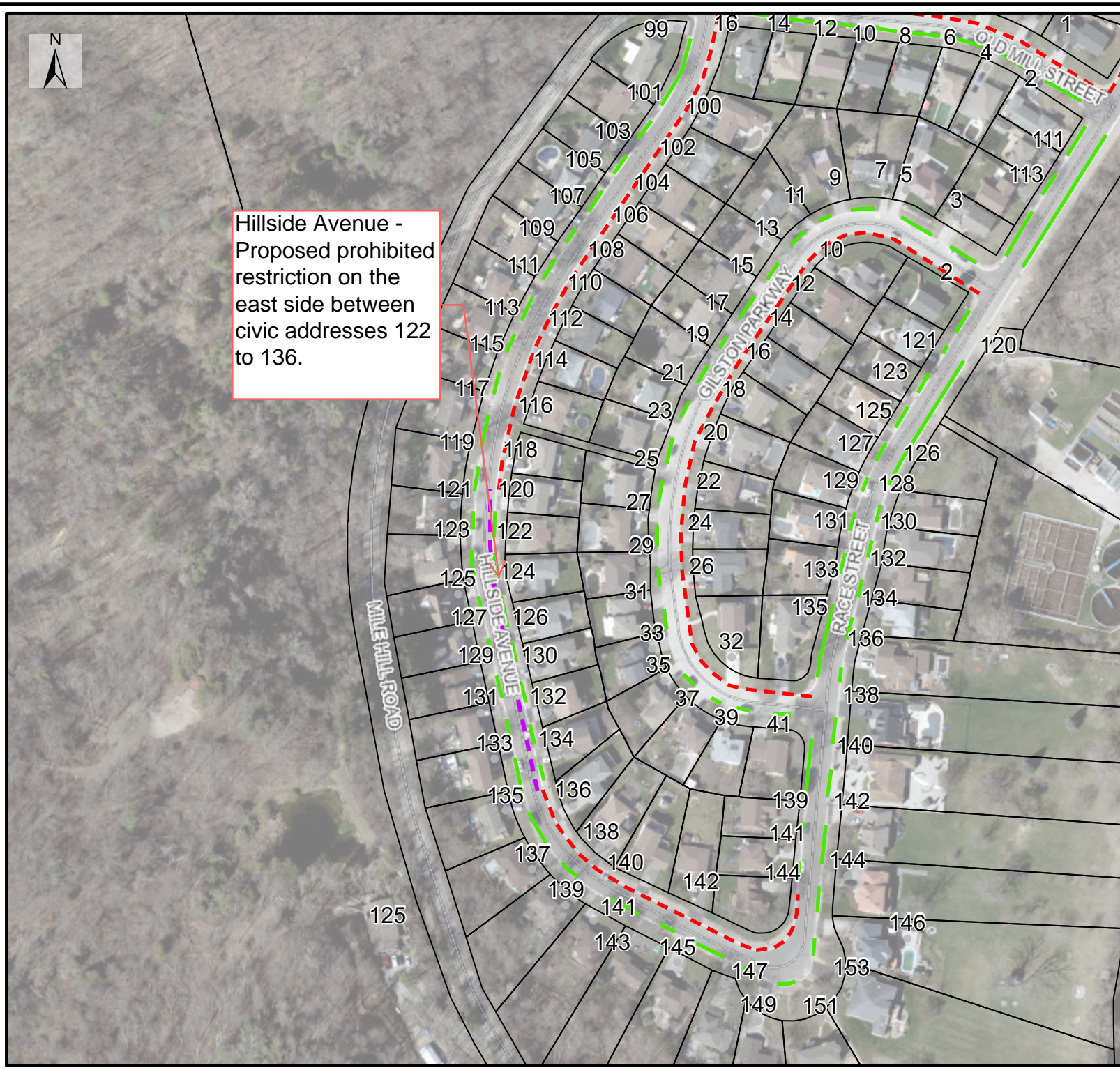




Hillside Avenue -  
Proposed prohibited  
restriction on the  
east side between  
civic addresses 122  
to 136.



**GENERAL NOTES:**  
Includes material under copyright of the Queens Printer of Ontario. All rights reserved. This drawing is for illustrative purposes only. The information contained is not a substitute for professional review or site survey and is subject to change without notice. The county of Brant takes no responsibility for, nor guarantees, the accuracy of the information contained.

- LEGEND:**
- Proposed Road Changes**  
 - - - - - Current Proposed Parking Change  
 - - - - - Current Proposed Stopping Change
- OnStreet Parking Restrictions**
- Stopping Prohibited - Firehall (Schedule 1)
  - Stopping Prohibited Anytime (Schedule 2)
  - - - - - Parking Prohibited Anytime (Schedule 3)
  - - - - - Parking Prohibited - Loading Zone (Schedule 9)
  - - - - - Parking Prohibited - Fire Route (Schedule 13)
  - - - - - Parking Restricted - Accessible Parking Permit Only (Schedule 12)
  - Parking Prohibited - Certain Days or Times (Schedule 4)
  - Parking Prohibited - Certain Days of the Month (Schedule 5)
  - Parking Restricted - Time Limited (Schedule 6)
  - Stopping Prohibited - School Bus Loading Zone (Schedule 7)
  - - - - - Parking Permit Application (Schedule 15)
  - Parking Allowed

**TITLE:**  
Hillside Avenue -  
between  
civic address 122 to  
civic address 136



**SCALE:** 1 : 3160  
0 10 20 30 40  
m

**DATE (YY/MM/DD):** 1/18/2026 | **SHEET:** 1 OF 1