



GENERAL NOTES:

Includes material under copyright of the Queens Printer of Ontario. All rights reserved. This drawing is for illustrative purposes only. The information contained is not a substitute for professional review or site survey and is subject to change without notice. The county of Brant takes no responsibility for, nor guarantees, the accuracy of the information contained.

- LEGEND:**
- Proposed Road Changes**
- Proposed Road Changes
- OnStreet Parking Restrictions**
- Stopping Prohibited - Firehall (Schedule 1)
 - Stopping Prohibited Anytime (Schedule 2)
 - Parking Prohibited Anytime (Schedule 3)
 - Parking Prohibited - Loading Zone (Schedule 9)
 - Parking Prohibited - Fire Route (Schedule 13)
 - Parking Restricted - Accessible Parking Permit Only (Schedule 12)
 - Parking Prohibited - Certain Days or Times (Schedule 4)
 - Parking Prohibited - Certain Days of the Month (Schedule 5)
 - Parking Restricted - Time Limited (Schedule 6)
 - Stopping Prohibited - School Bus Loading Zone (Schedule 7)
 - Parking Permit Application (Schedule 15)
 - Parking Allowed

TITLE:

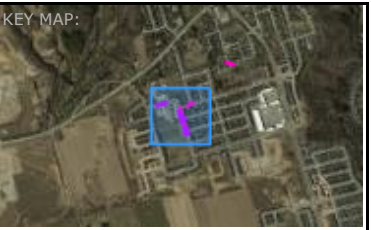
**Irongate Drive at Cobblestone Drive
Proposed No Stopping Restrictions**



SCALE: 1 : 1369

0 10 20 m

DATE (YY/MM/DD): 2025-5-8 **SHEET:** 1 OF 1



GENERAL NOTES:

Includes material under copyright of the Queens Printer of Ontario. All rights reserved.
This drawing is for illustrative purposes only. The information contained is not a substitute for professional review or site survey and is subject to change without notice. The county of Brant takes no responsibility for, nor guarantees, the accuracy of the information contained.

- LEGEND:**
- Proposed Road Changes**
-
- OnStreet Parking Restrictions**
- Stopping Prohibited - Firehall (Schedule 1)
 - Stopping Prohibited Anytime (Schedule 2)
 - Parking Prohibited Anytime (Schedule 3)
 - Parking Prohibited - Loading Zone (Schedule 9)
 - Parking Prohibited - Fire Route (Schedule 13)
 - Parking Restricted - Accessible Parking Permit Only (Schedule 12)
 - Parking Prohibited - Certain Days or Times (Schedule 4)
 - Parking Prohibited - Certain Days of the Month (Schedule 5)
 - Parking Restricted - Time Limited (Schedule 6)
 - Stopping Prohibited - School Bus Loading Zone (Schedule 7)
 - Parking Permit Application (Schedule 15)
 - Parking Allowed

TITLE:

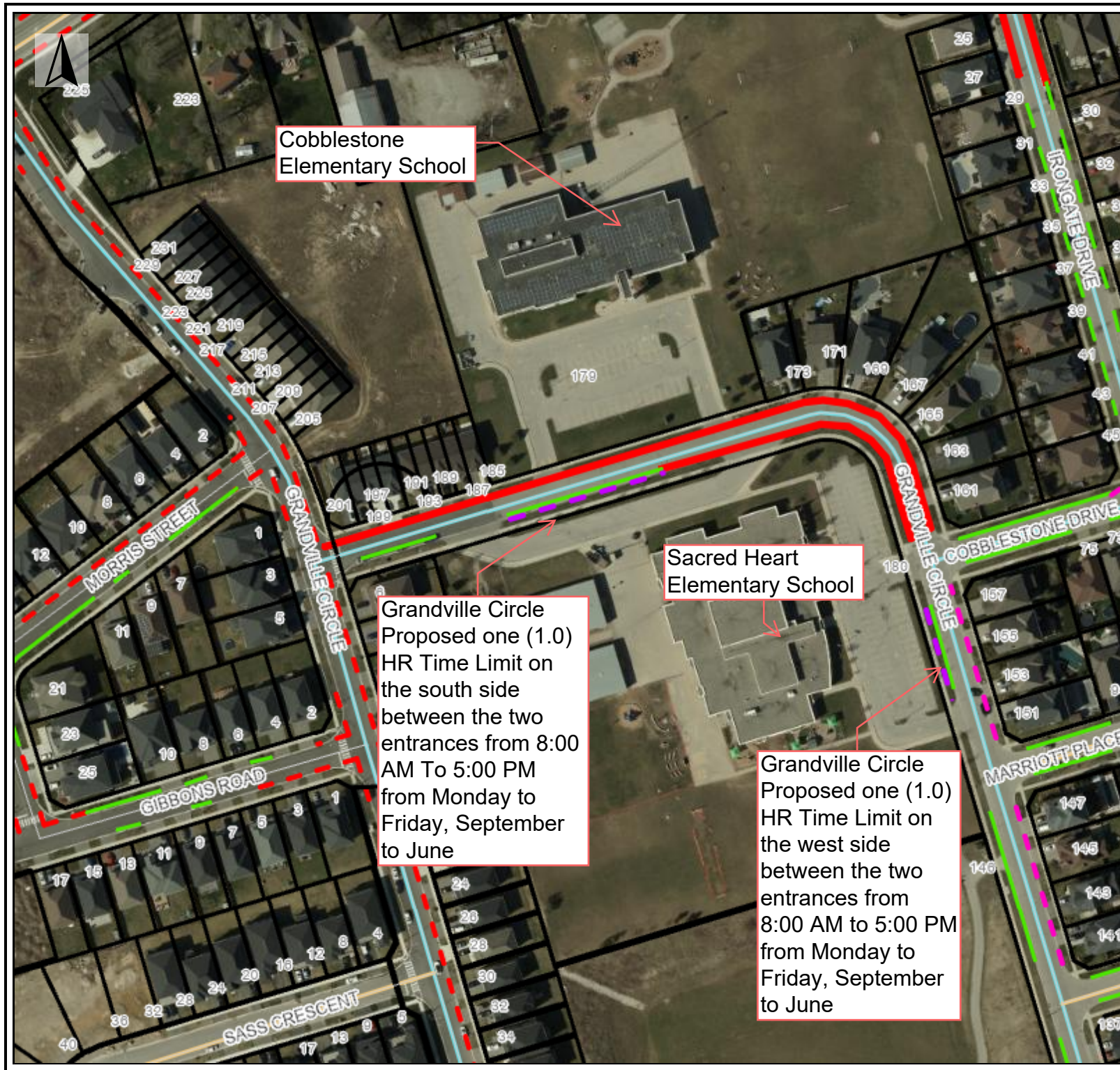
Grandville Circle - Proposed Stopping Restrictions



SCALE: 1 : 2738

0 25 50 m

DATE (YY/MM/DD): 2025-5-8 **SHEET:** 1 OF 1



Cobblestone
Elementary School

Sacred Heart
Elementary School

Grandville Circle
Proposed one (1.0)
HR Time Limit on
the south side
between the two
entrances from 8:00
AM To 5:00 PM
from Monday to
Friday, September
to June

Grandville Circle
Proposed one (1.0)
HR Time Limit on
the west side
between the two
entrances from
8:00 AM to 5:00 PM
from Monday to
Friday, September
to June



KEY MAP:

GENERAL NOTES:

Includes material under copyright of the Queens Printer of Ontario. All rights reserved. This drawing is for illustrative purposes only. The information contained is not a substitute for professional review or site survey and is subject to change without notice. The county of Brant takes no responsibility for, nor guarantees, the accuracy of the information contained.

- LEGEND:
- Proposed Road Changes
-
- OnStreet Parking Restrictions
- Stopping Prohibited - Firehall (Schedule 1)
 - Stopping Prohibited Anytime (Schedule 2)
 - Parking Prohibited Anytime (Schedule 3)
 - Parking Prohibited - Loading Zone (Schedule 9)
 - Parking Prohibited - Fire Route (Schedule 13)
 - Parking Restricted - Accessible Parking Permit Only (Schedule 12)
 - Parking Prohibited - Certain Days or Times (Schedule 4)
 - Parking Prohibited - Certain Days of the Month (Schedule 5)
 - Parking Restricted - Time Limited (Schedule 6)
 - Stopping Prohibited - School Bus Loading Zone (Schedule 7)
 - Parking Permit Application (Schedule 15)
 - Parking Allowed

TITLE:

Sacred Heart &
Cobblestone Elementary
Schools



SCALE: 1 : 2738

0 25 50 m

DATE (YY/MM/DD): 2025-5-8

SHEET: 1 OF 1