

PHOTOGRAPH OF EXISTING CONDITION

SITE PLAN

SCALE: 1:240

SITE & HOUSE PLAN

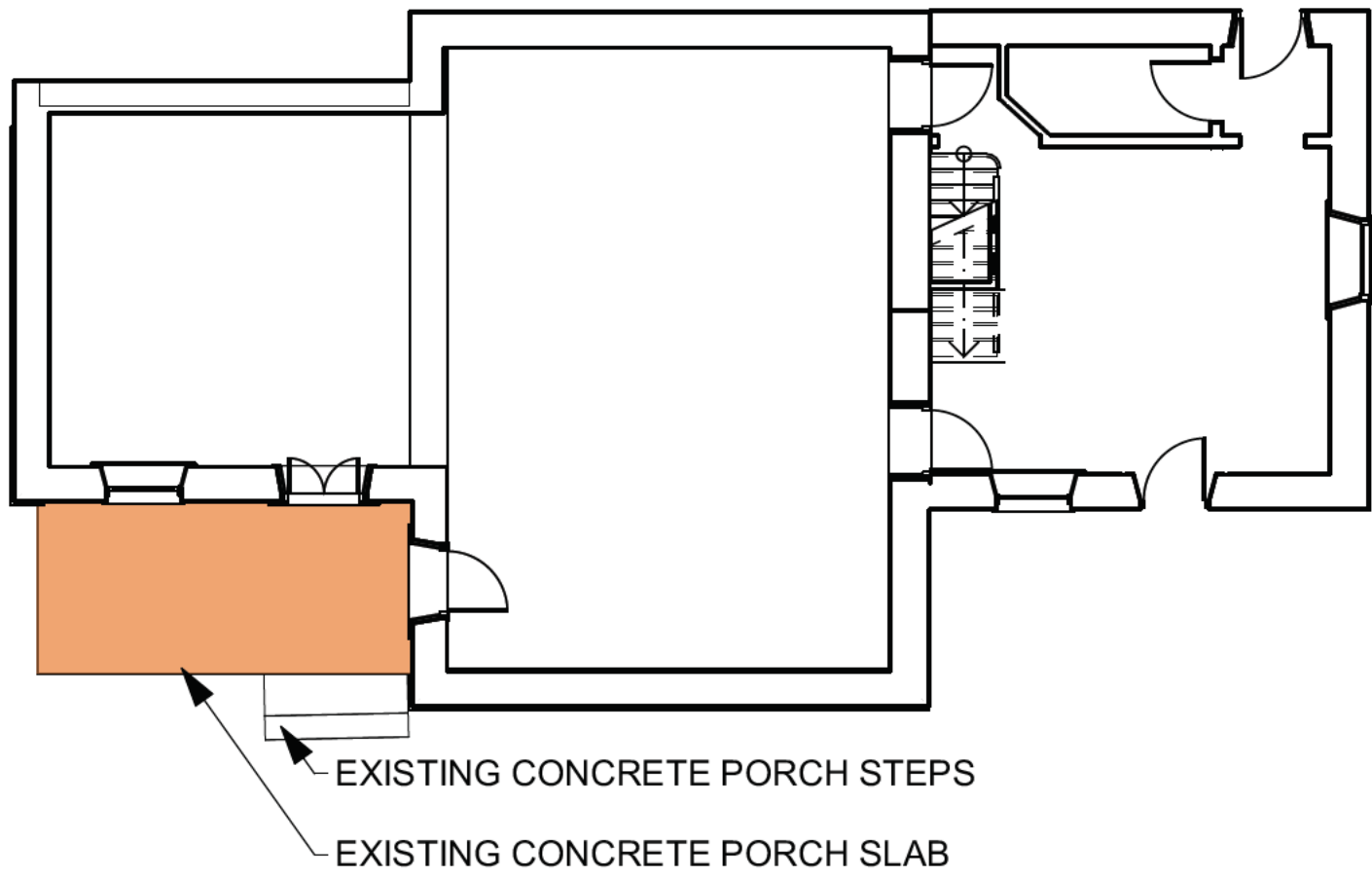
KILTON COTTAGE
VERANDAH RESTORATION
33 OAK AVENUE PARIS ONTARIO



KILTON COTTAGE CIRCA 1920



ENLARGED VIEW OF ORIGINAL VERANDAH



FIRST FLOOR PLAN

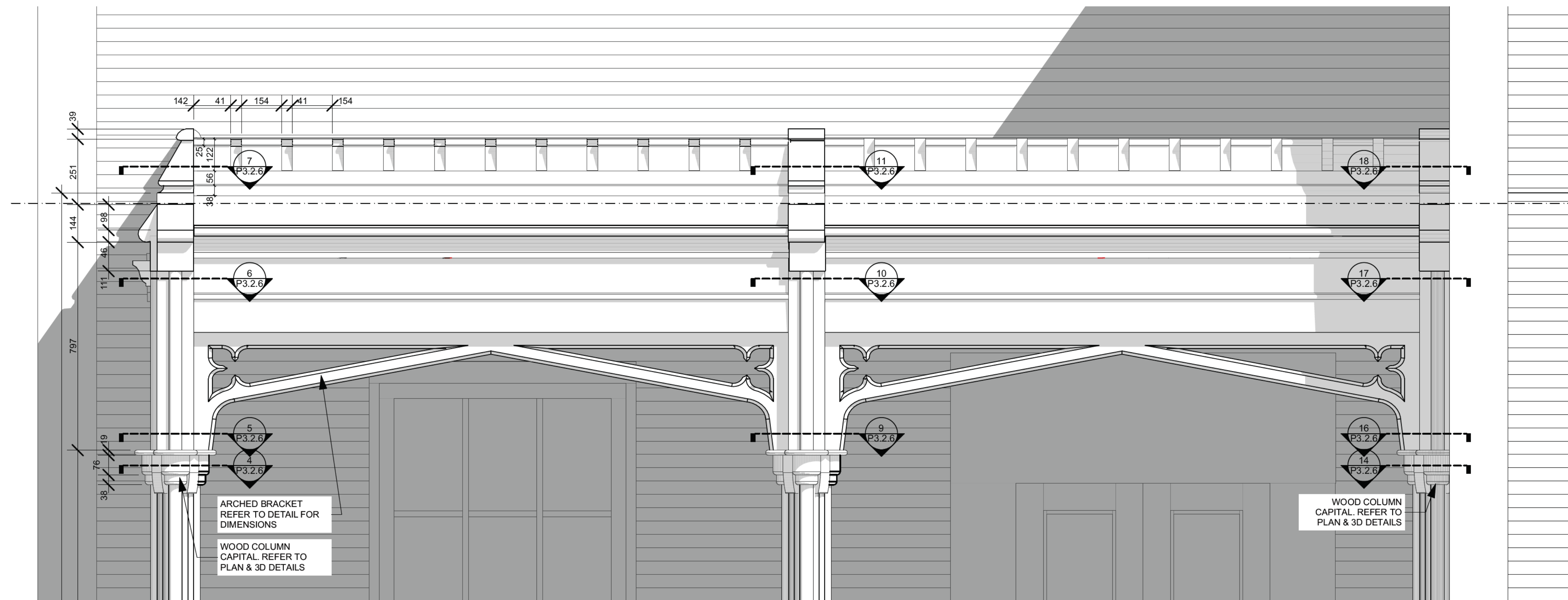
SCALE: 1:100

CONTACT: DWIGHT LANDER

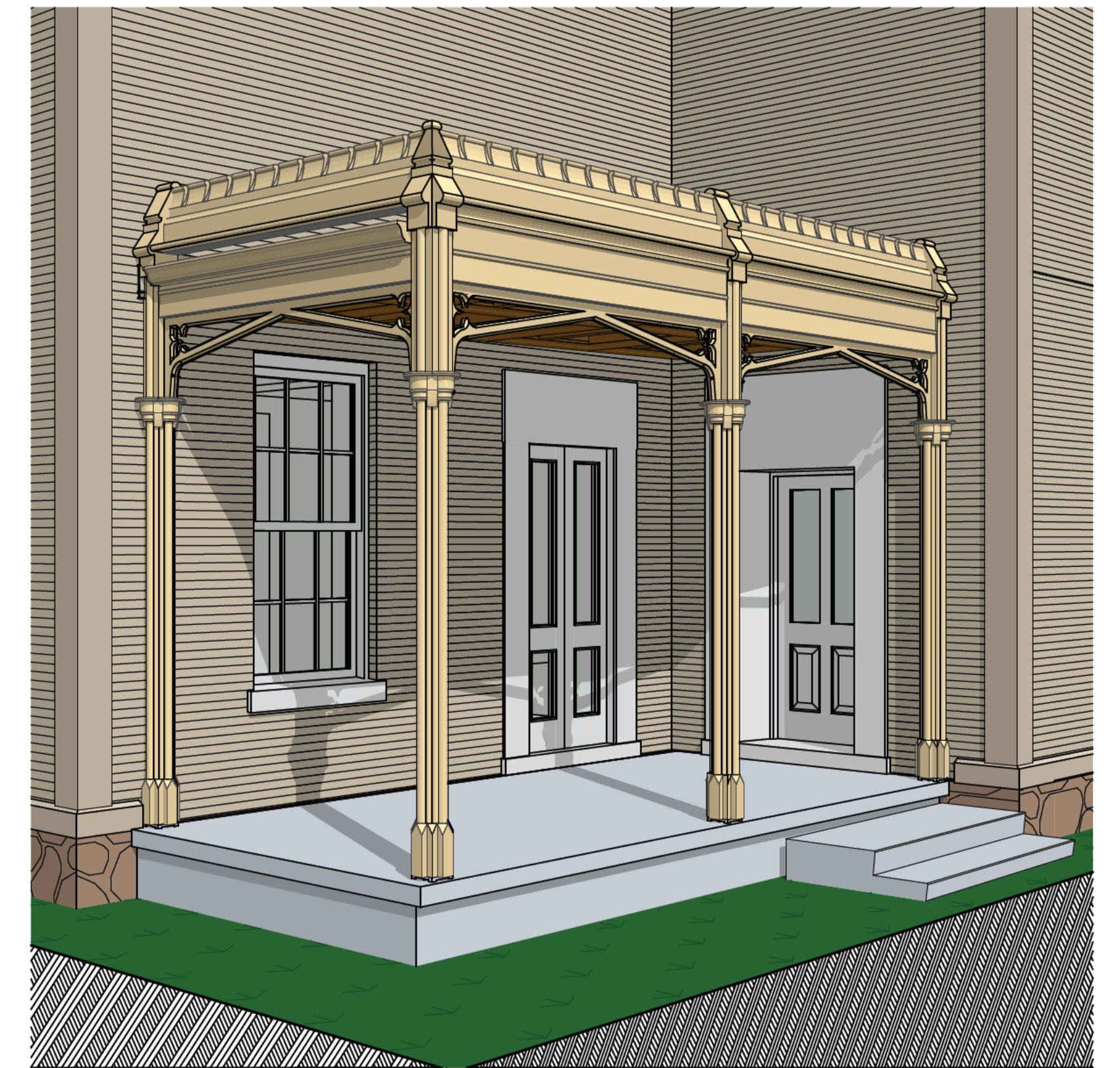


P3.2.1

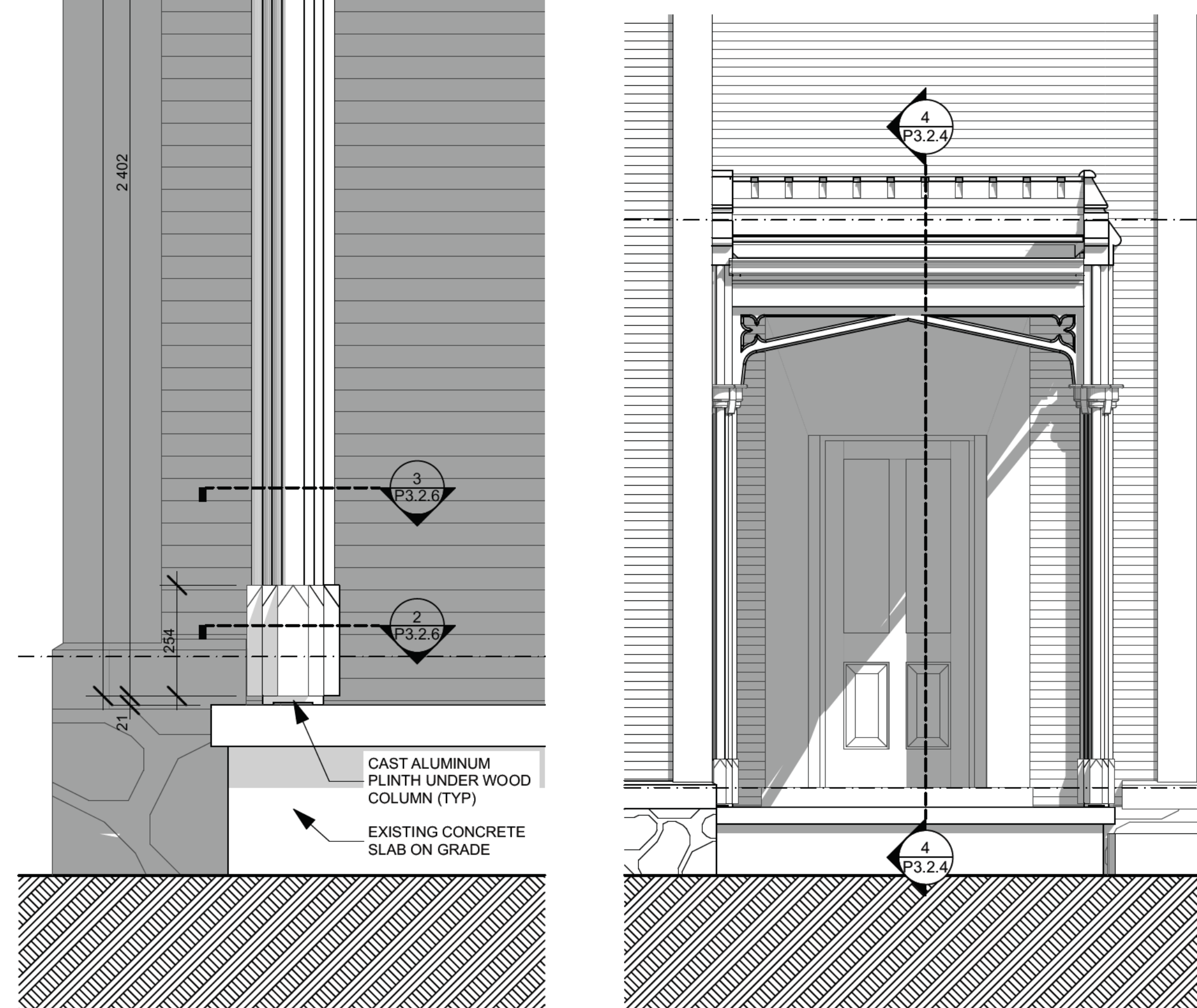
2025-03-21



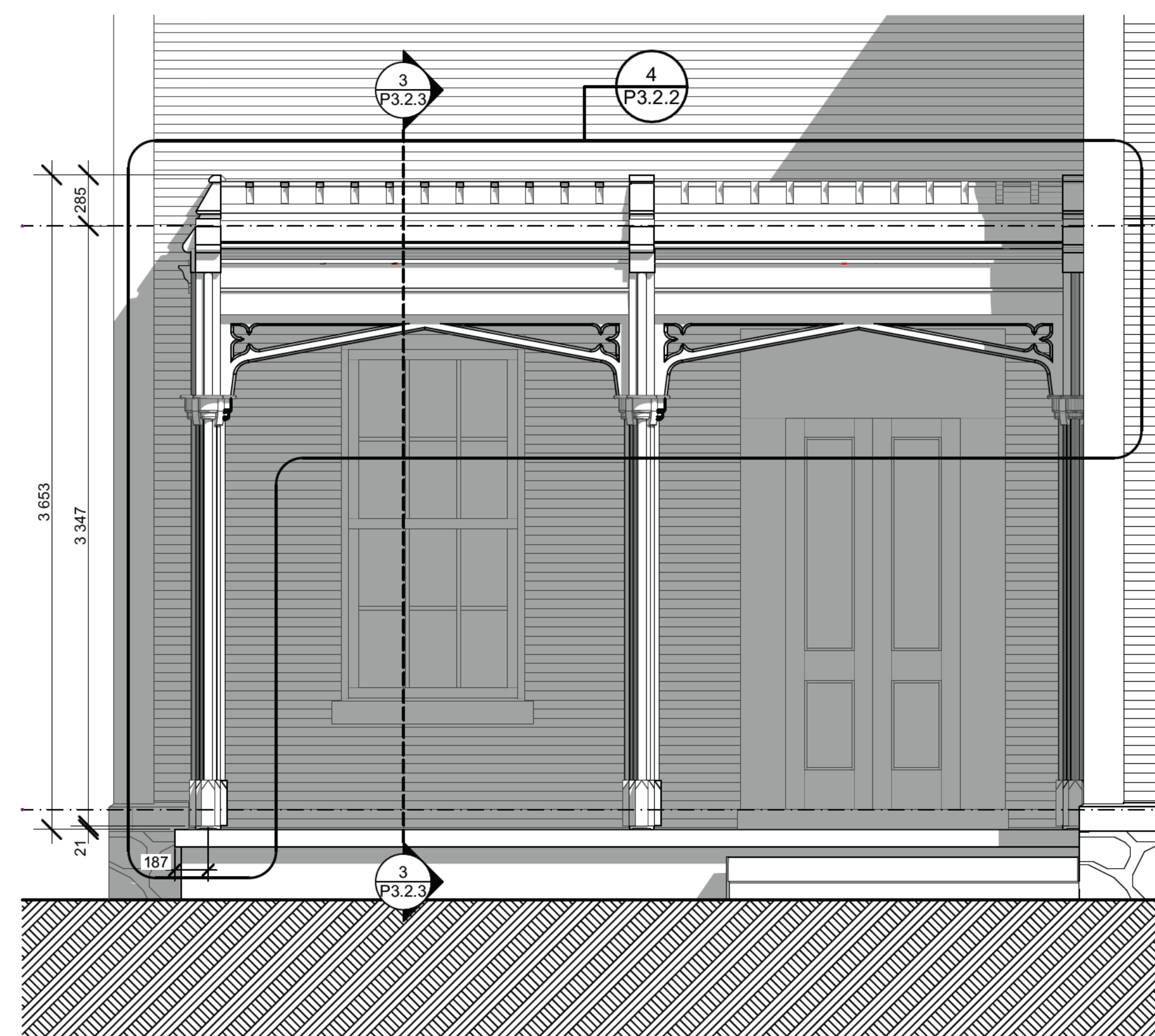
4 SOUTH ELEVATION OF VERANDAH ENLARGED
P3.2.2 SCALE: 1:10



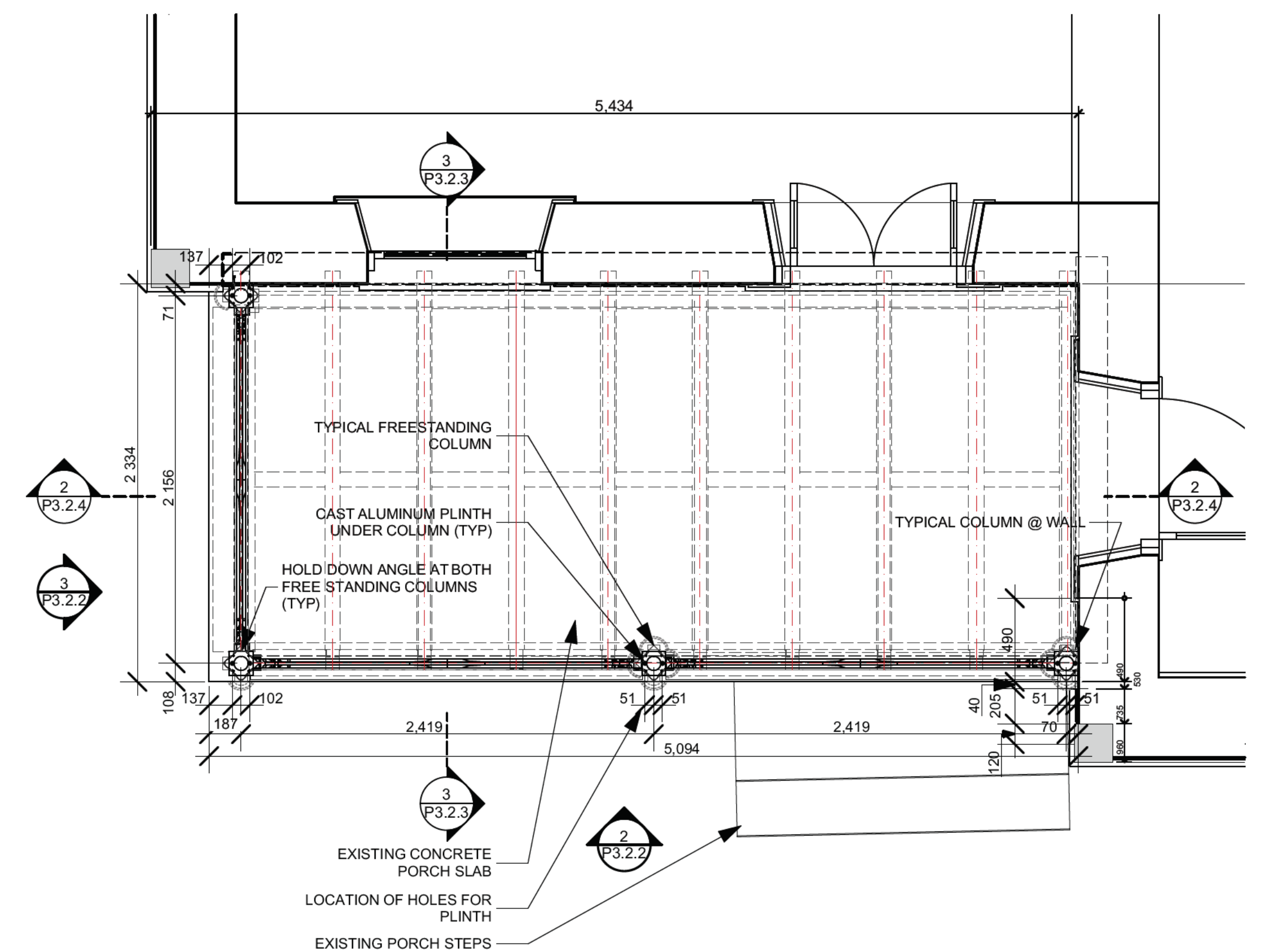
5 SOUTH-EAST PERSPECTIVE OF VERANDAH
P3.2.2 NOT TO SCALE



3 WEST ELEV OF VERANDAH
P3.2.2 SCALE: 1:25



2 SOUTH ELEVATION OF VERANDAH
P3.2.2 SCALE: 1:25



1 VERANDAH FIRST FLOOR PLAN
P3.2.2 SCALE: 1:25

FIRST FLOOR PLAN & ELEVATIONS

**KILTON COTTAGE
VERANDAH RESTORATION**
33 OAK AVENUE PARIS ONTARIO

CONTACT: DWIGHT LANDER

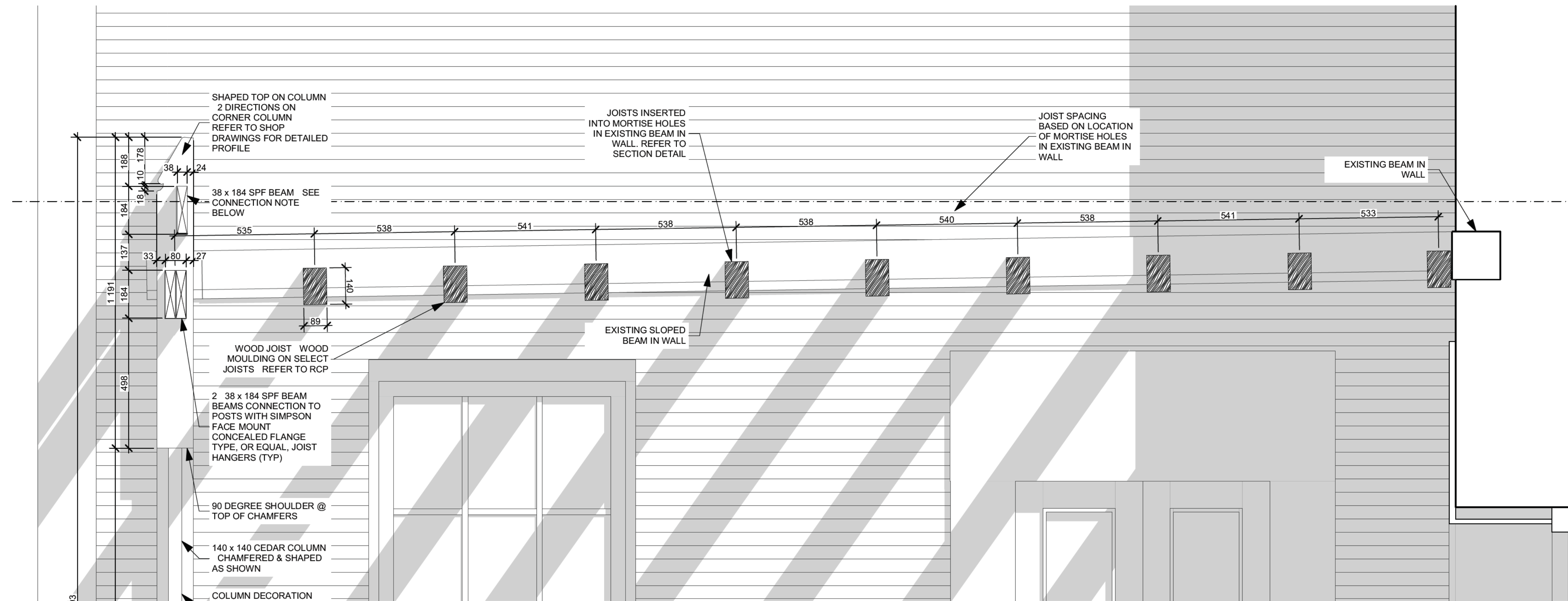


P3.2.2
2025-03-21

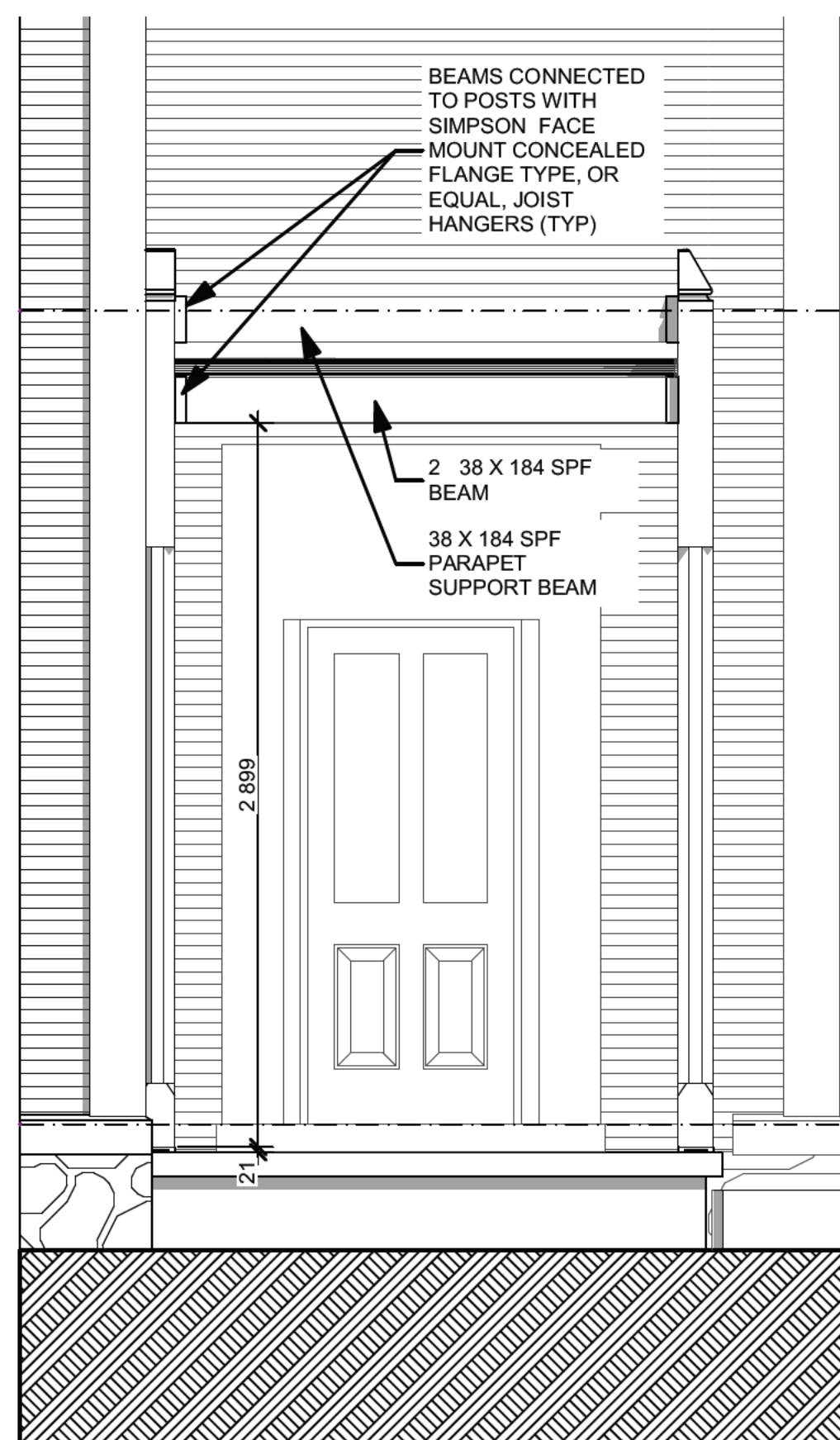
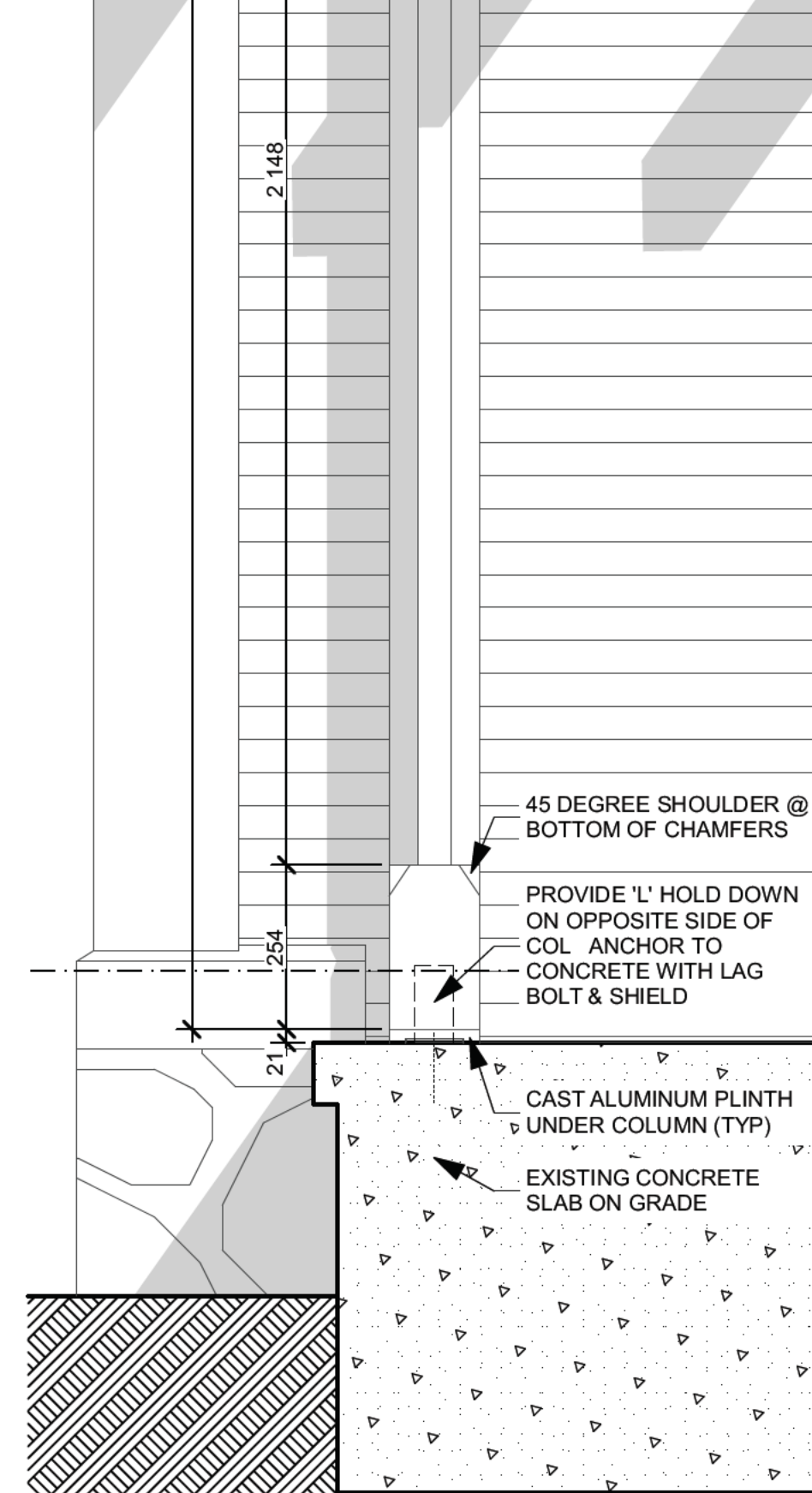




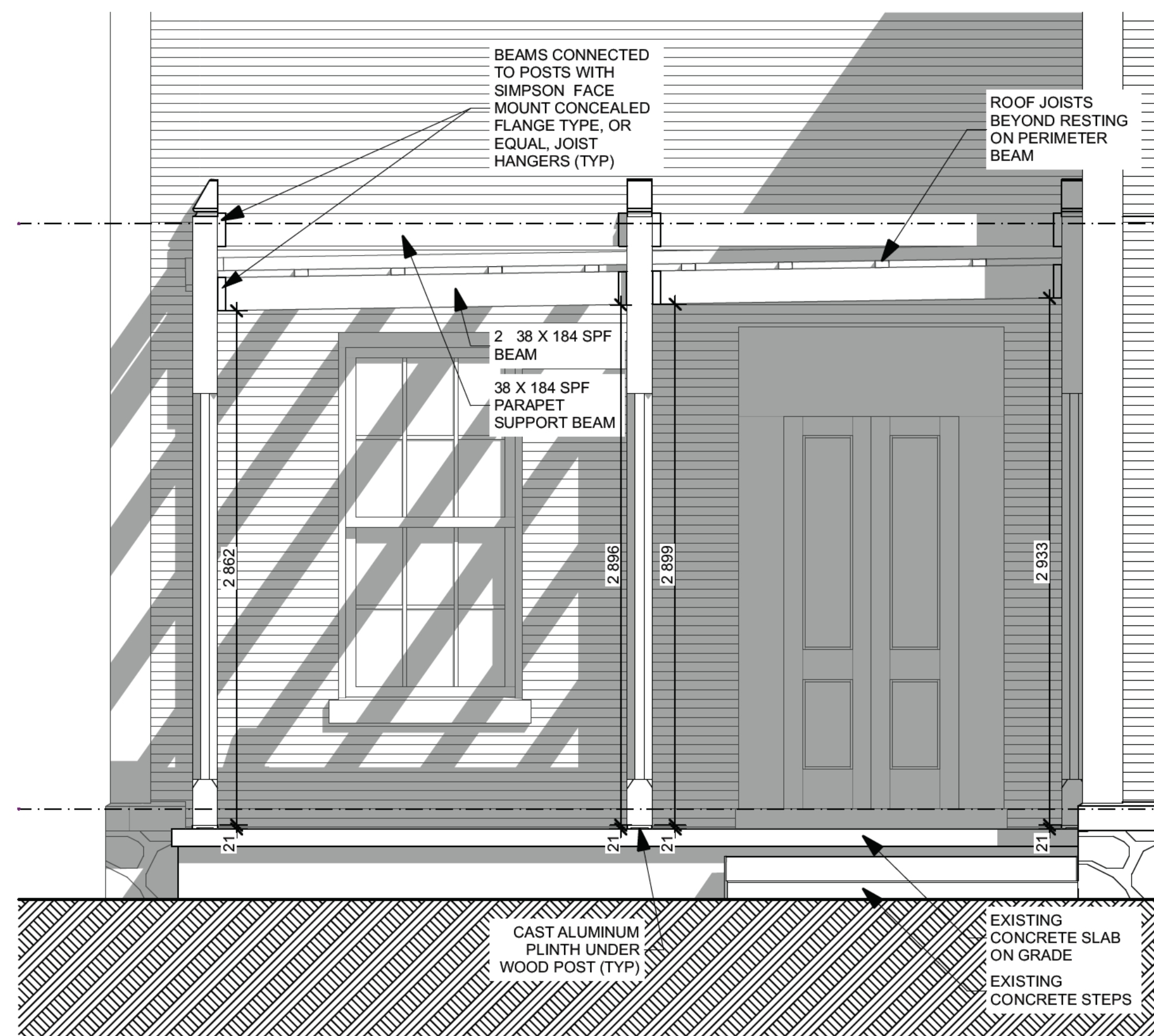
CONTACT: DWIGHT LANDER



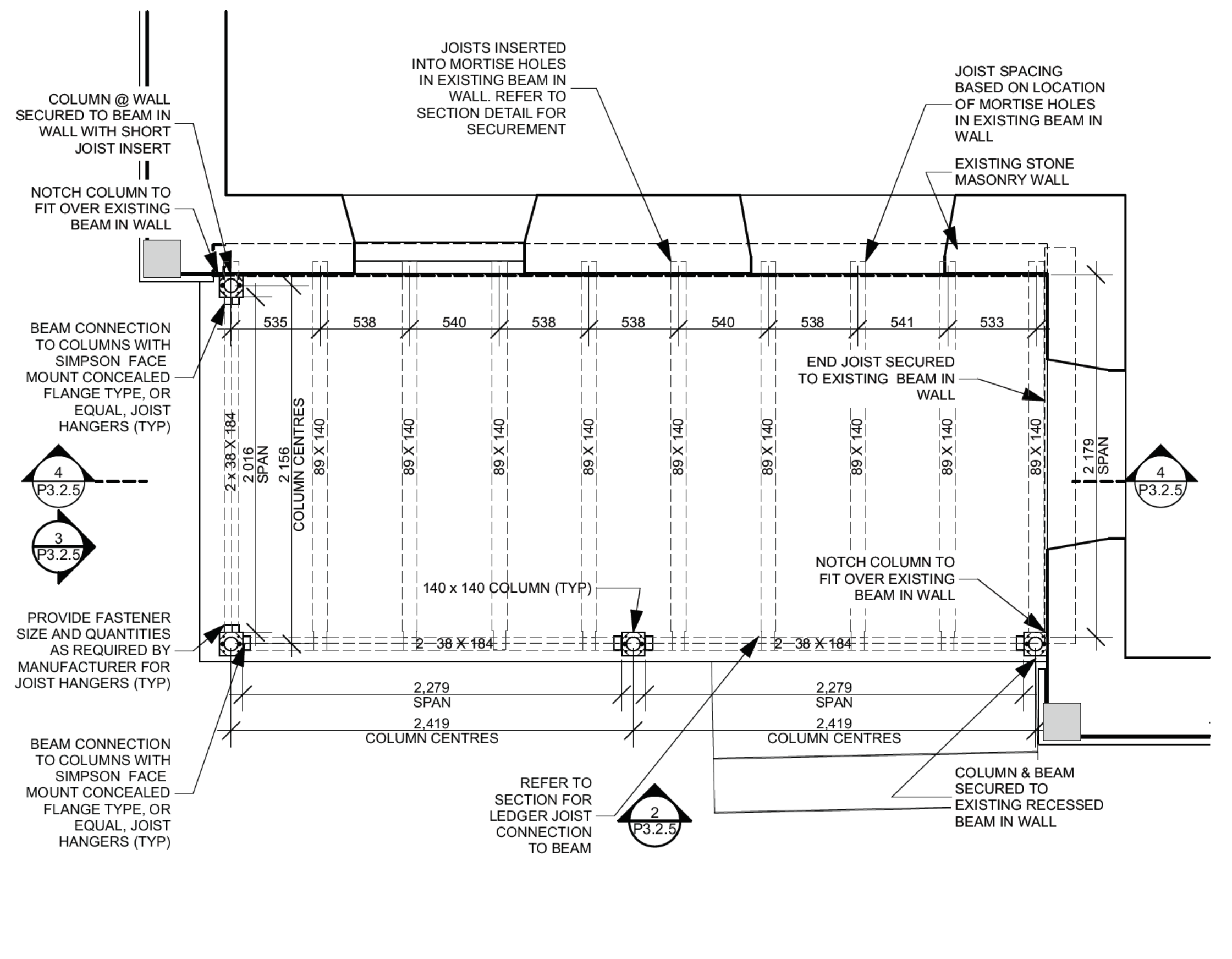
4 WEST-EAST ENLARGED SECTION - STRUCTURAL
P3.2.5 SCALE: 1:10



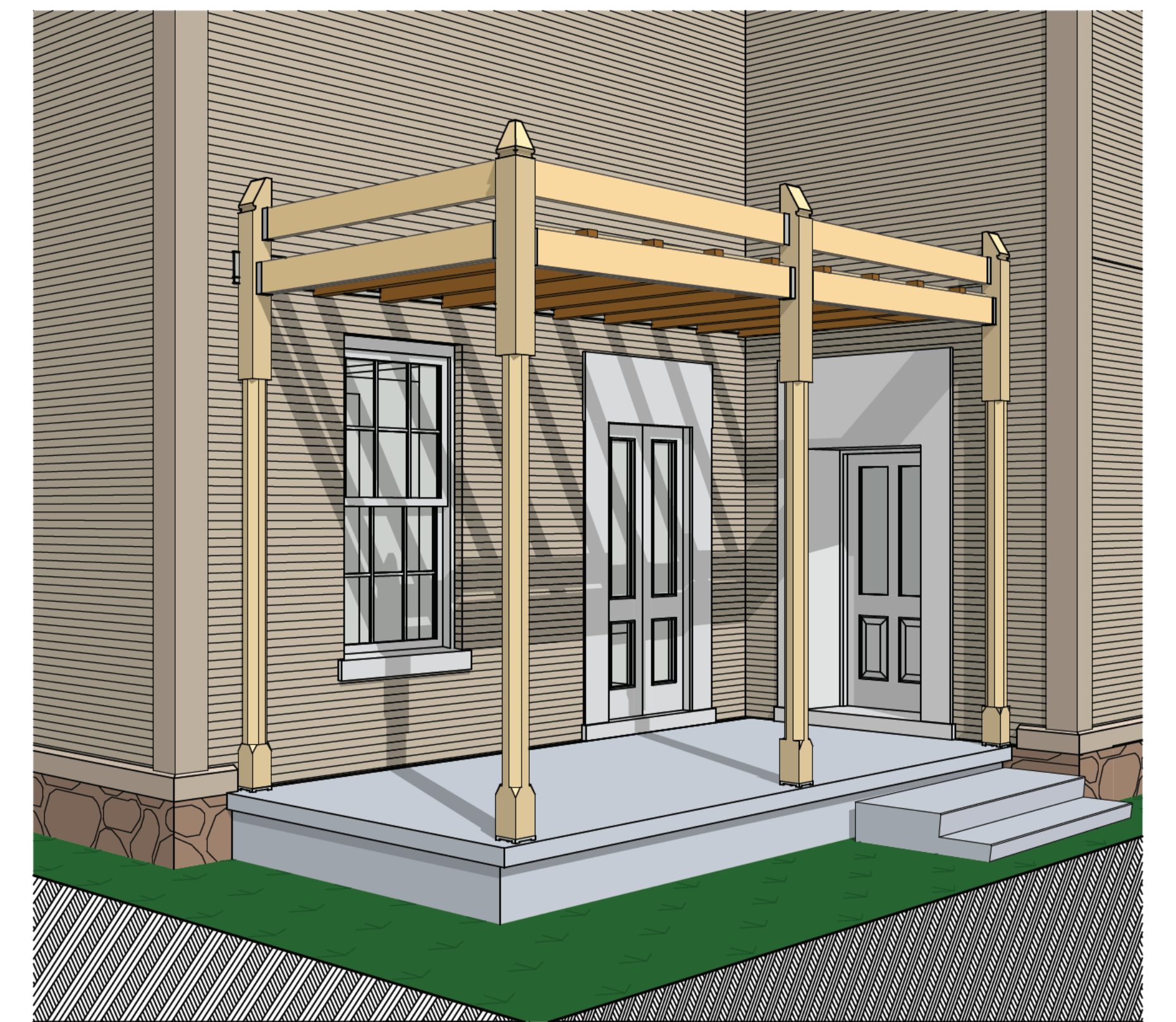
3 WEST ELEV OF STRUCTURE
P3.2.5 SCALE: 1:25



2 SOUTH ELEVATION OF VERANDAH STRUCTURE
P3.2.5 SCALE: 1:25



1 VERANDAH STRUCTURAL FRAMING PLAN
P3.2.5 SCALE: 1:25



5 SOUTH-EAST VIEW OF VERANDAH STRUCTURE
P3.2.5 NOT TO SCALE

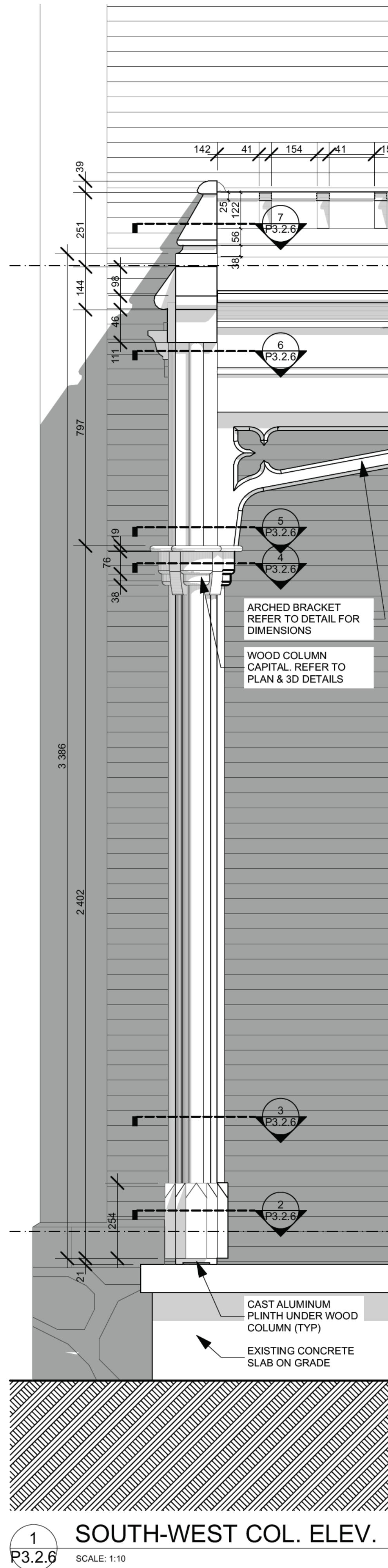
STRUCTURAL PLAN & STRUCTURAL
ELEVATIONS

KILTON COTTAGE
VERANDAH RESTORATION
33 OAK AVENUE PARIS ONTARIO

CONTACT: DWIGHT LANDER

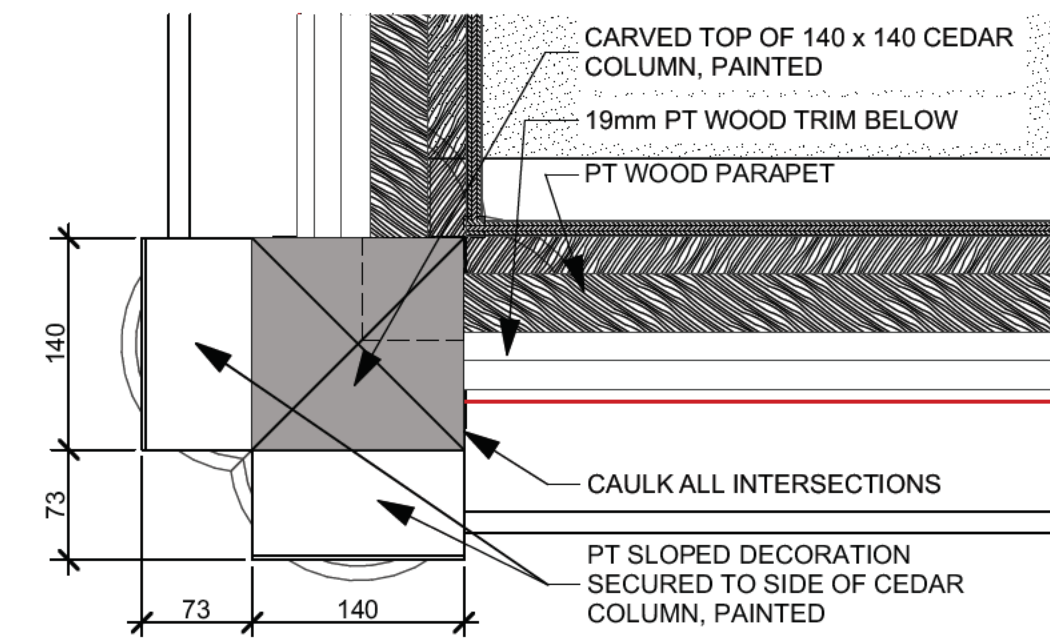


P3.2.5
2025-03-21

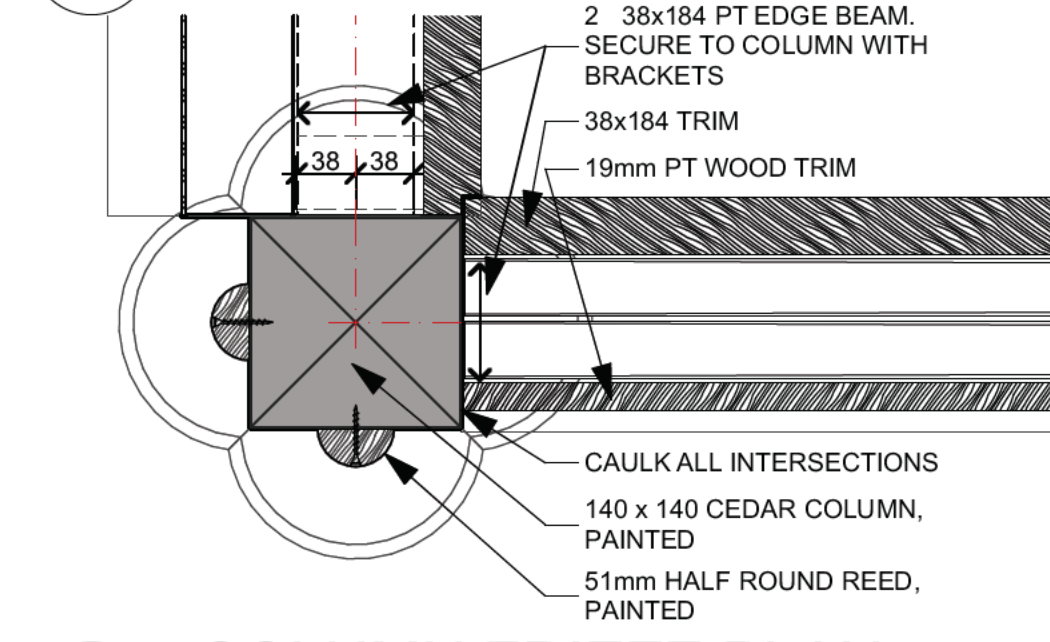


1 SOUTH-WEST COL. ELEV.
P3.2.6 SCALE: 1:10

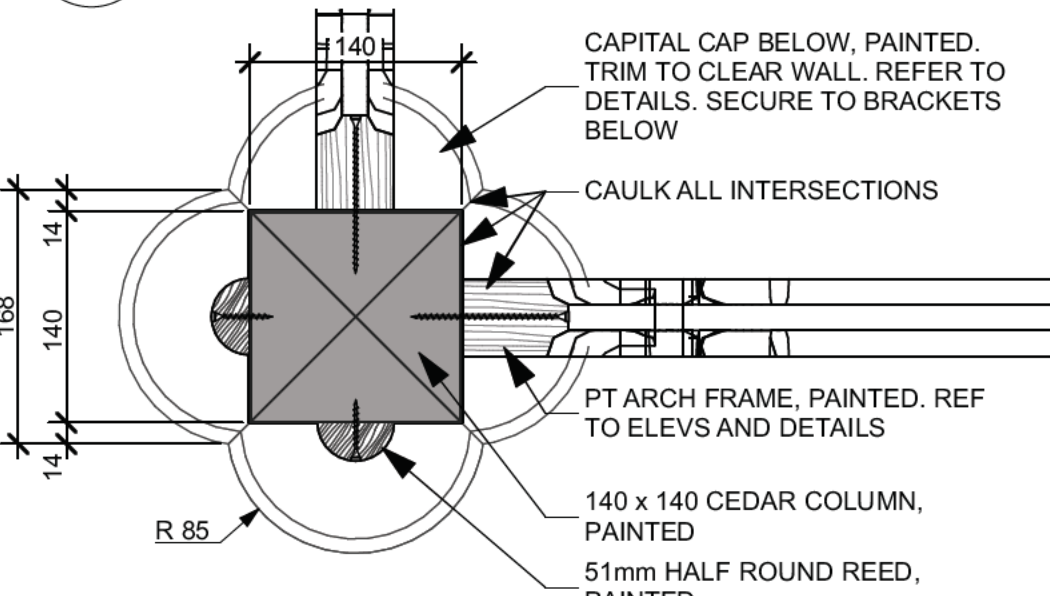
PLAN DETAILS



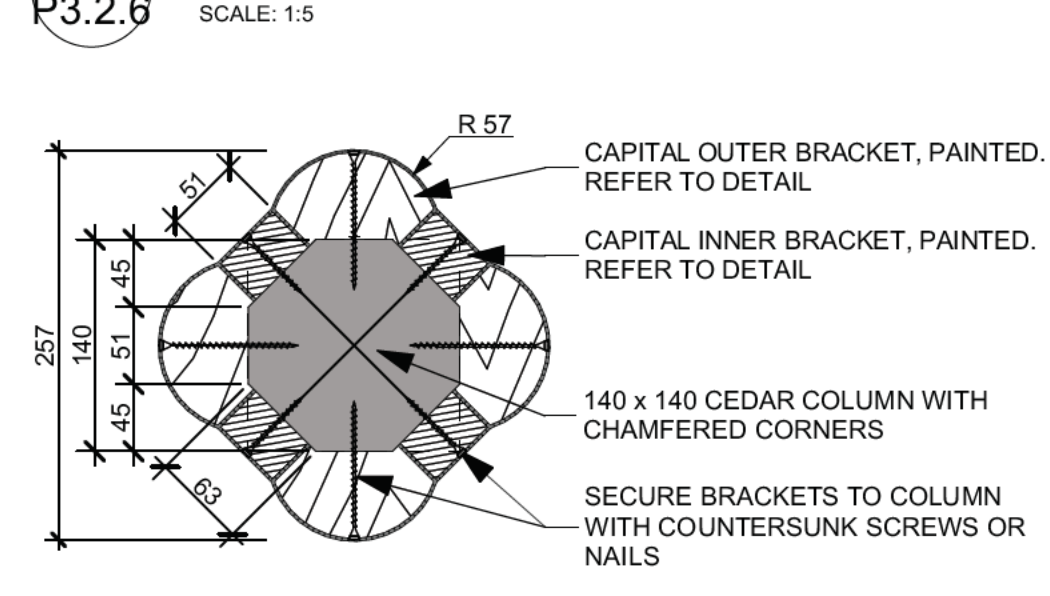
7 COLUMN PLAN TOP
P3.2.6 SCALE: 1:5



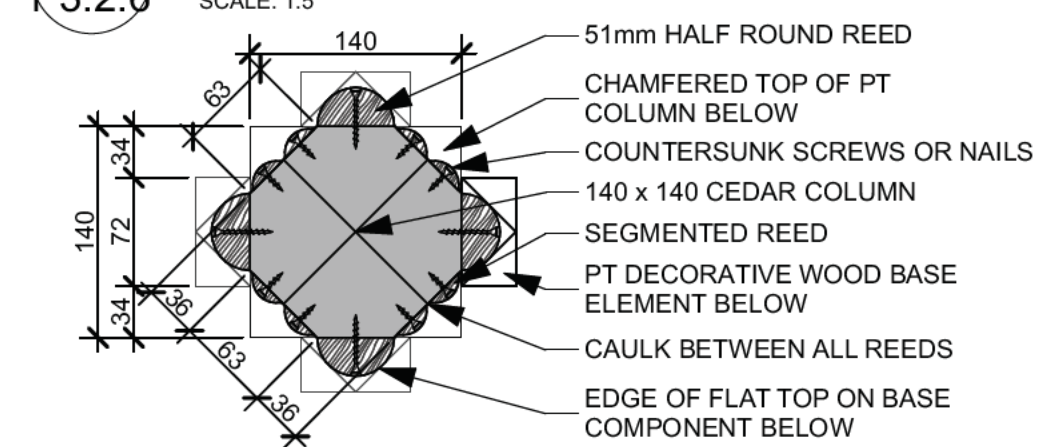
6 COLUMN FRIEZE PLAN
P3.2.6 SCALE: 1:5



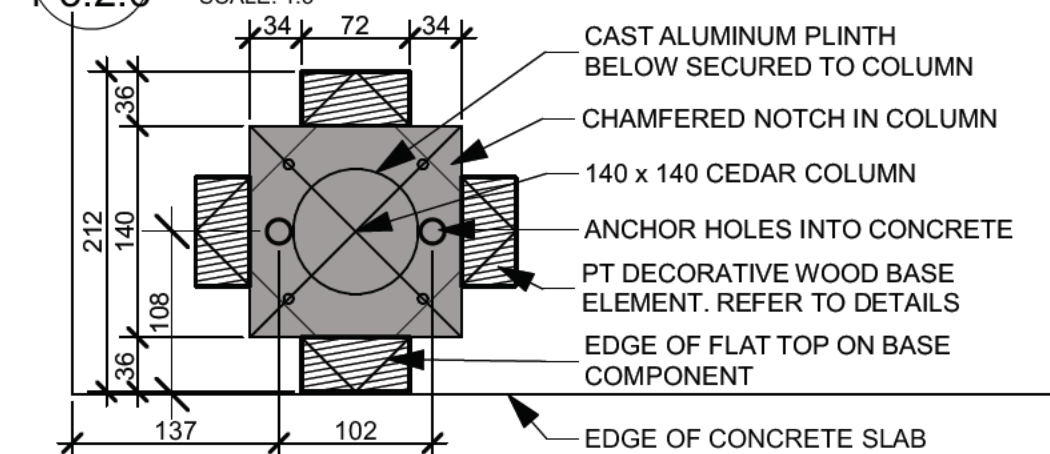
5 COLUMN CAPITAL PLAN
P3.2.6 SCALE: 1:5



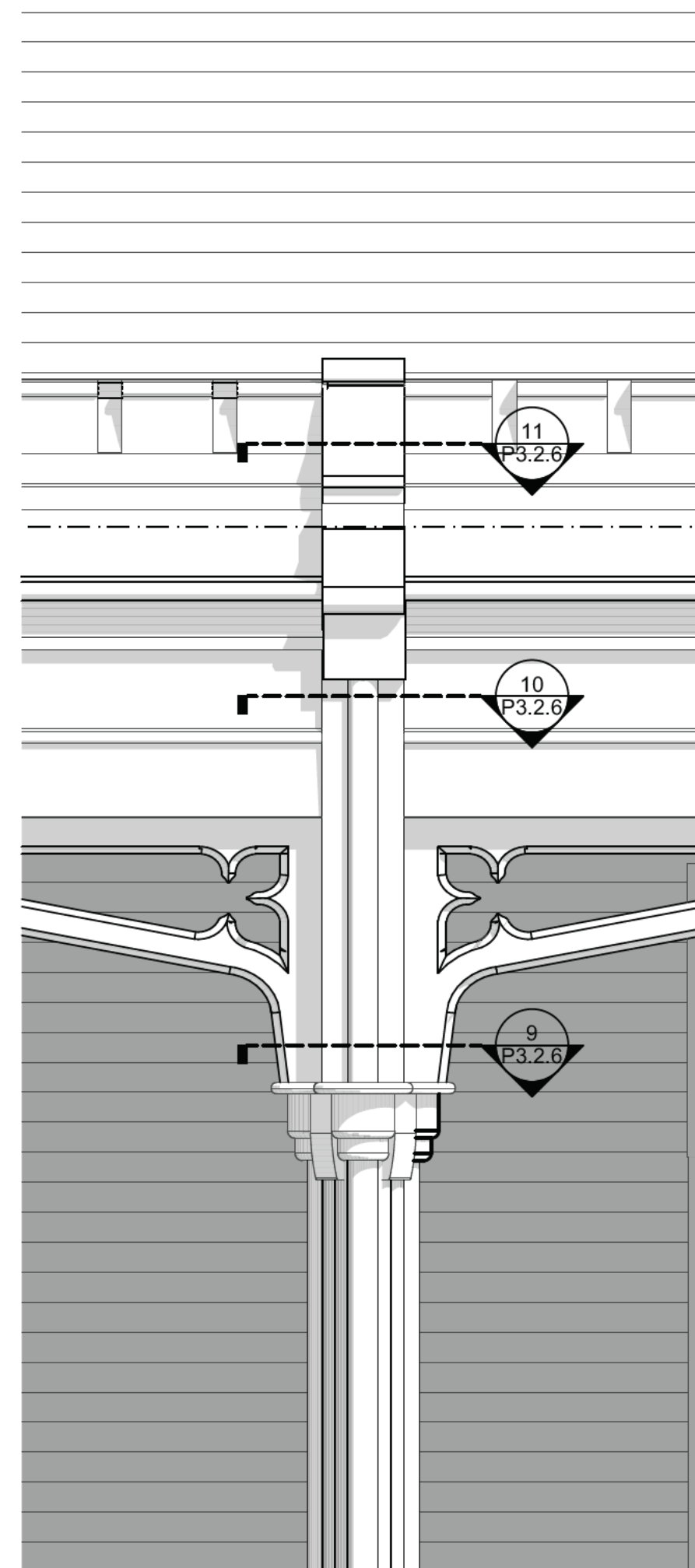
4 COLUMN CAPITAL PLAN
P3.2.6 SCALE: 1:5



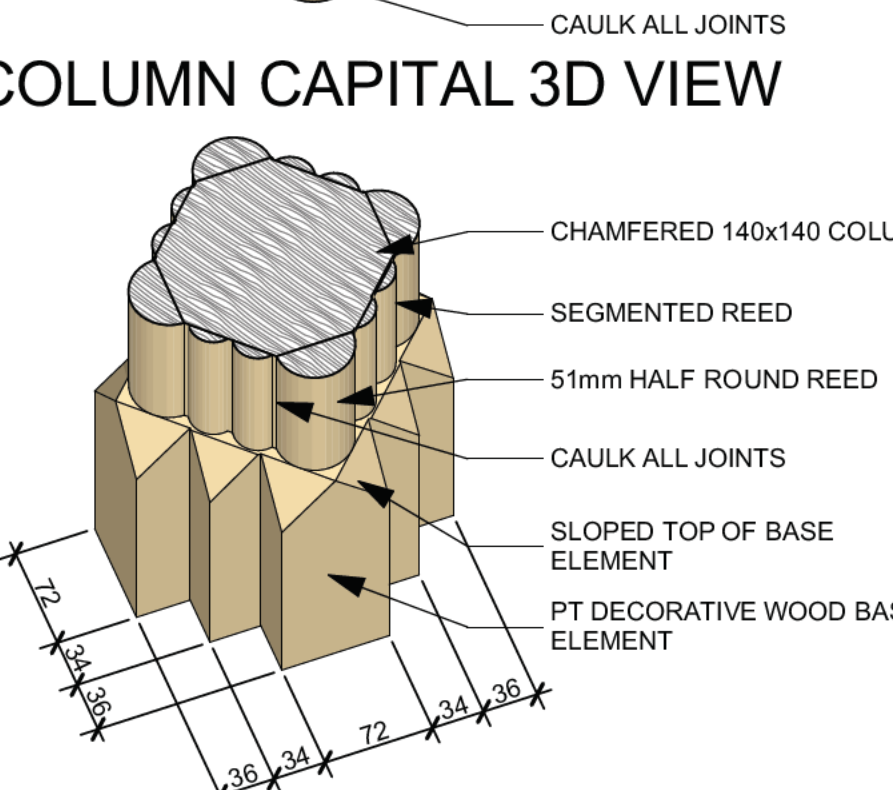
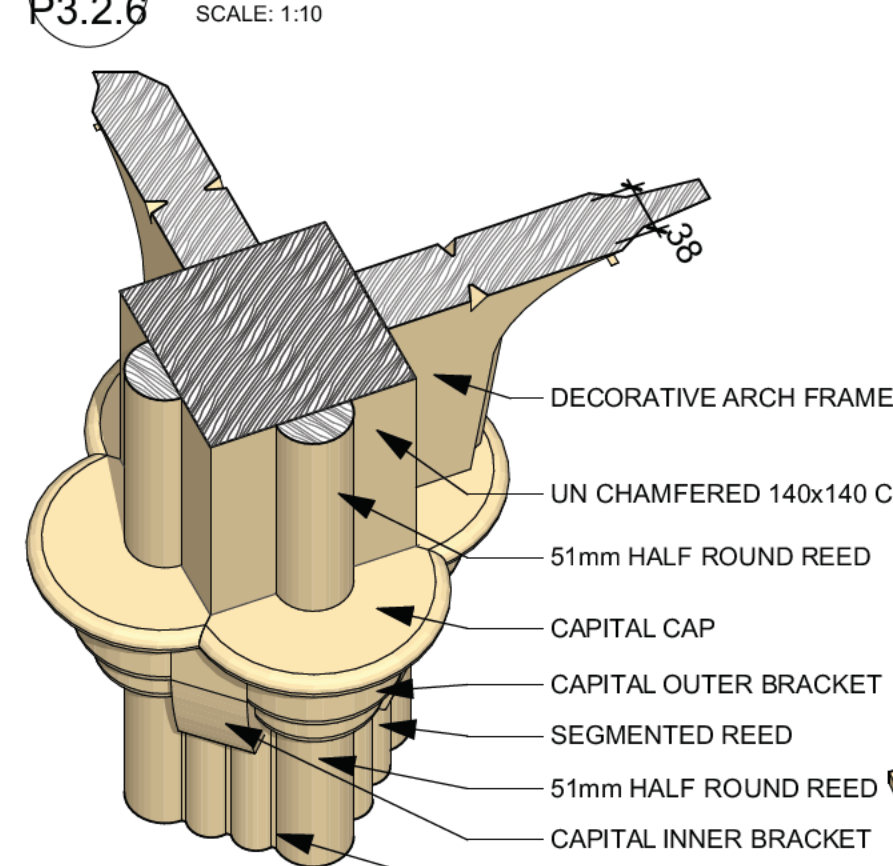
3 COLUMN SHAFT PLAN
P3.2.6 SCALE: 1:5



2 COLUMN BASE PLAN
P3.2.6 SCALE: 1:5

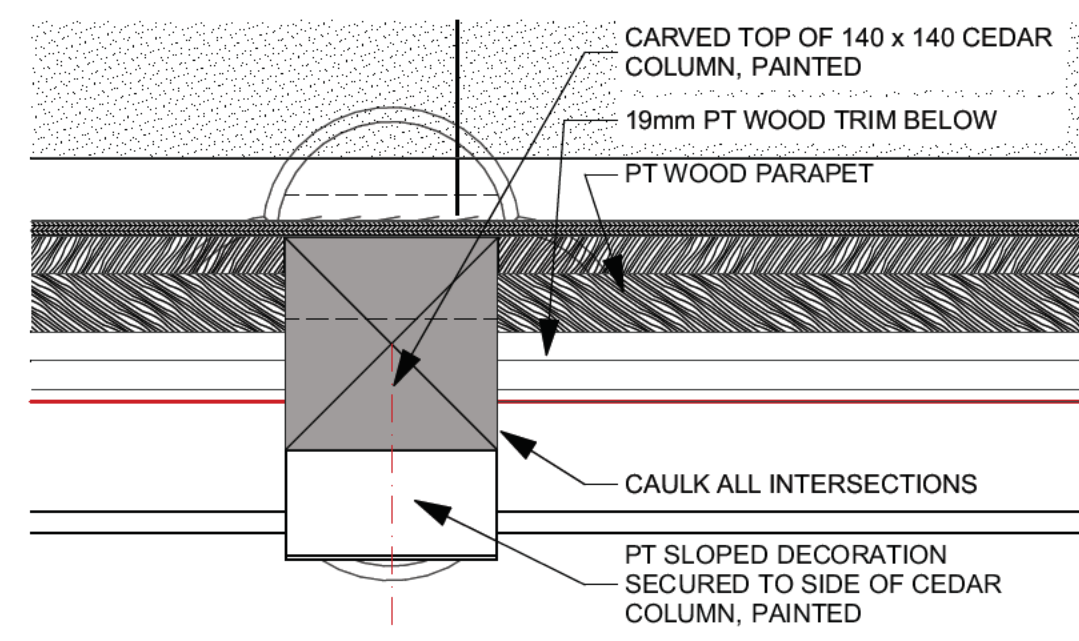


8 SOUTH CTR. COL. ELEV.
P3.2.6 SCALE: 1:10

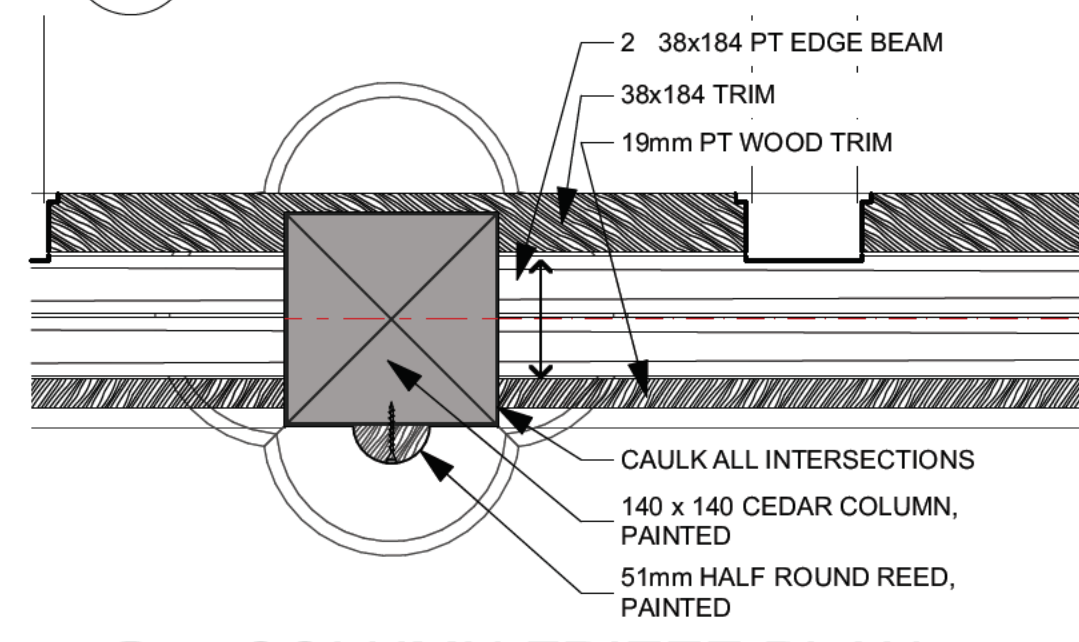


COLUMN CAPITAL 3D VIEW

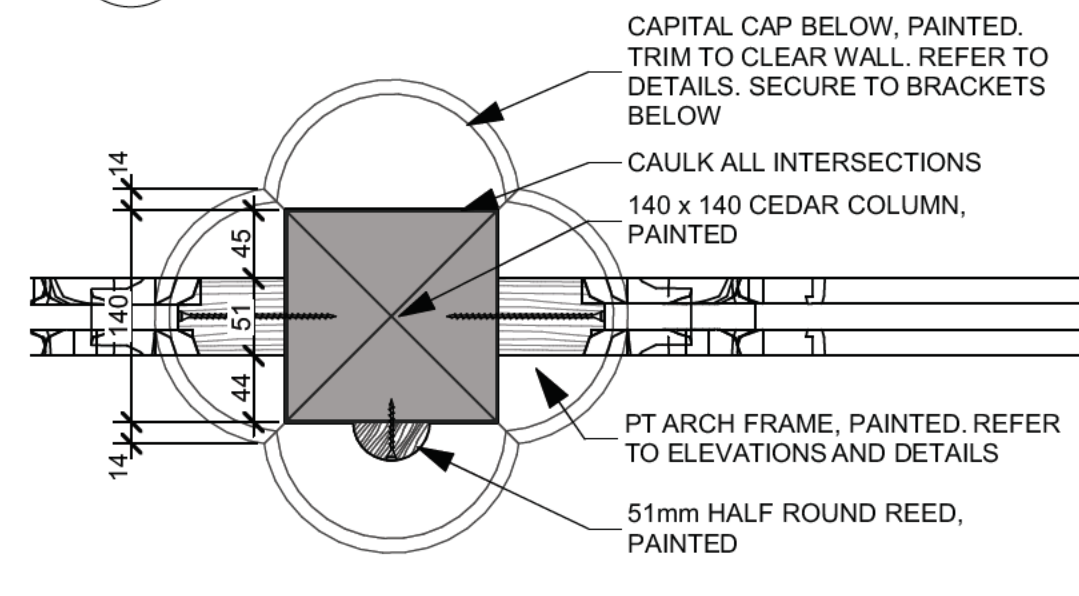
COLUMN BASE 3D VIEW



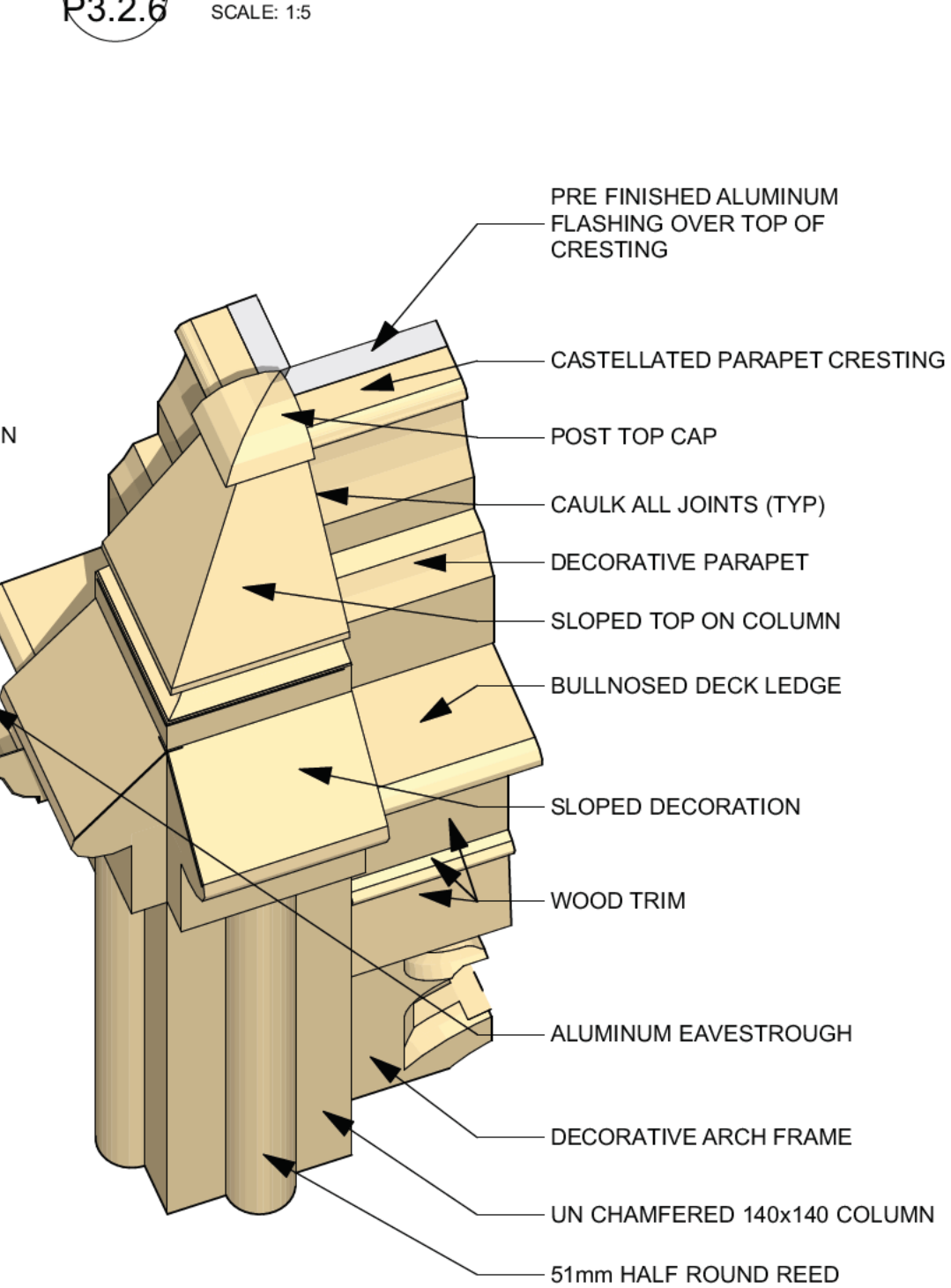
11 COLUMN PLAN TOP
P3.2.6 SCALE: 1:5



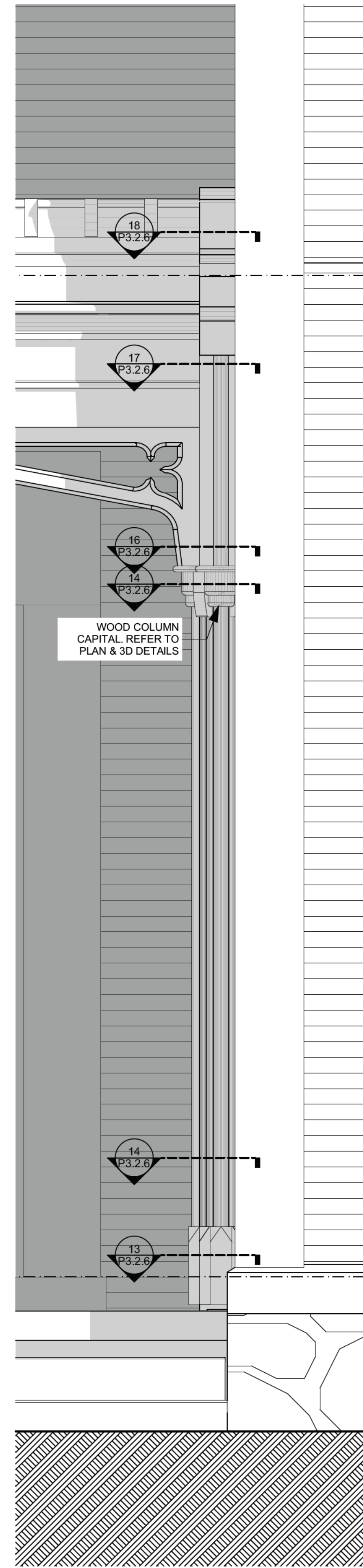
10 COLUMN FRIEZE PLAN
P3.2.6 SCALE: 1:5



9 COLUMN CAPITAL PLAN
P3.2.6 SCALE: 1:5

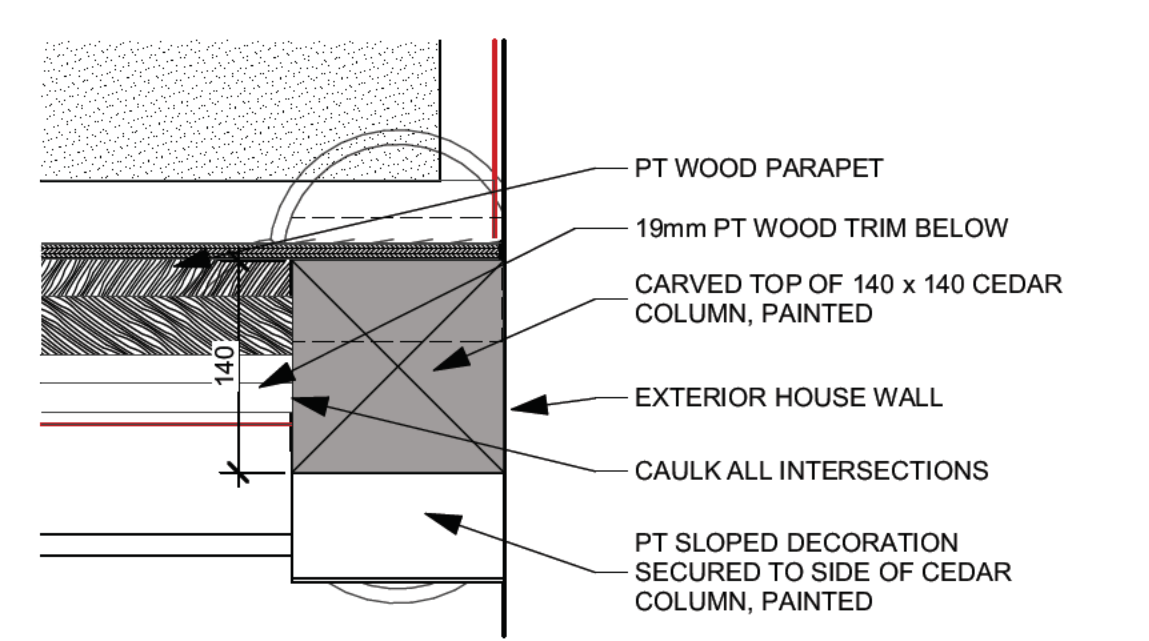


TOP CORNER 3D VIEW

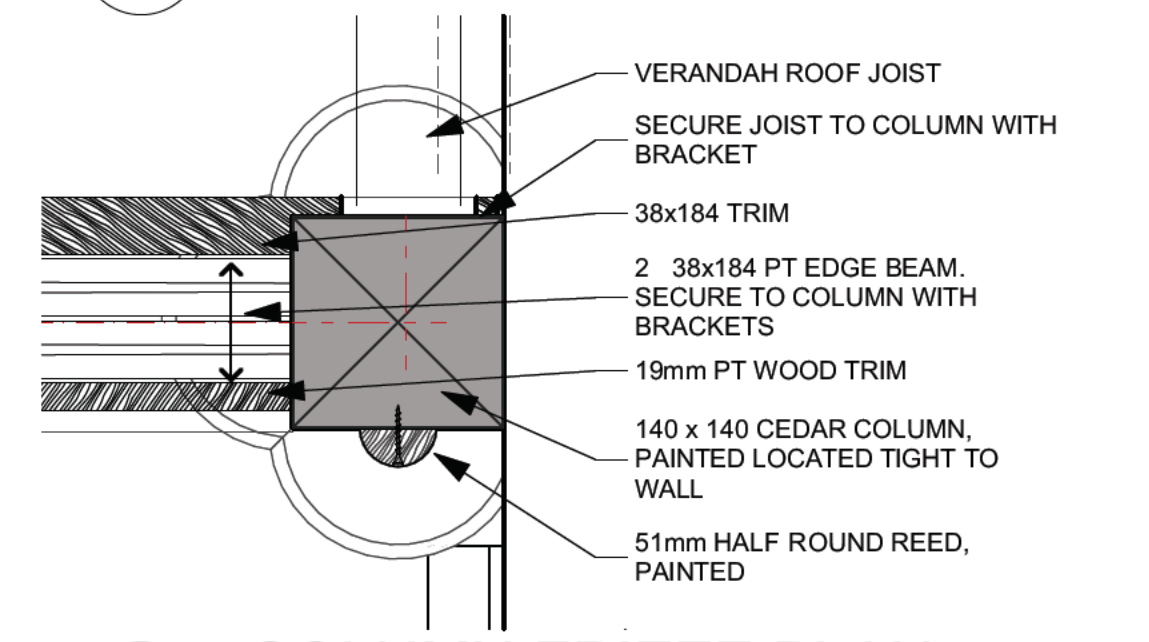


12 SOUTH-EAST COL. ELEV.
P3.2.6 SCALE: 1:10

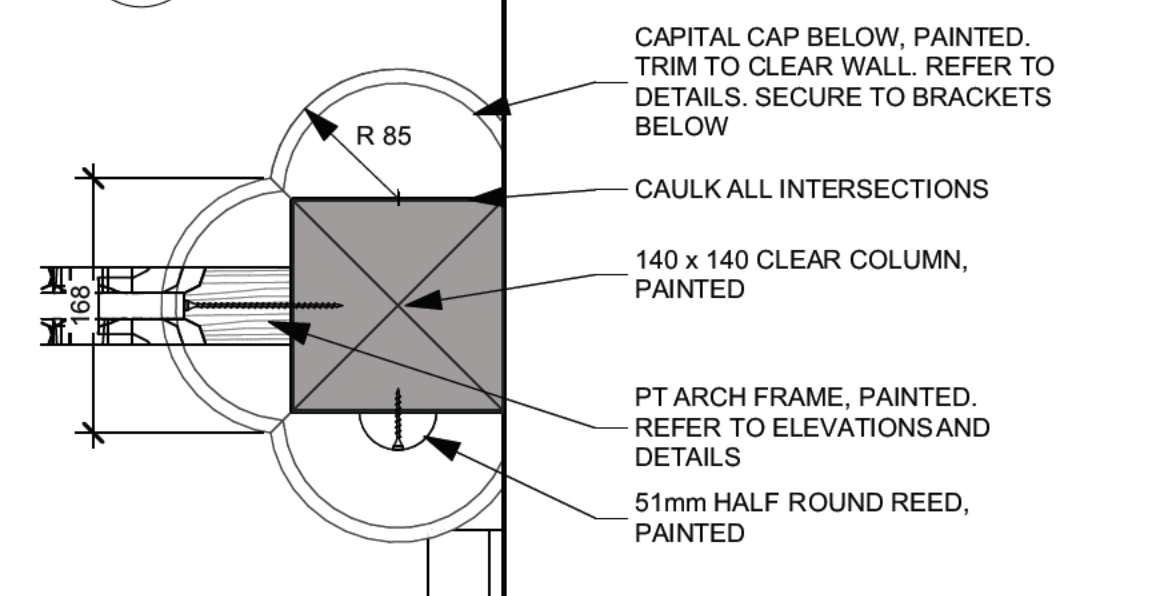
CONTACT: DWIGHT LANDER



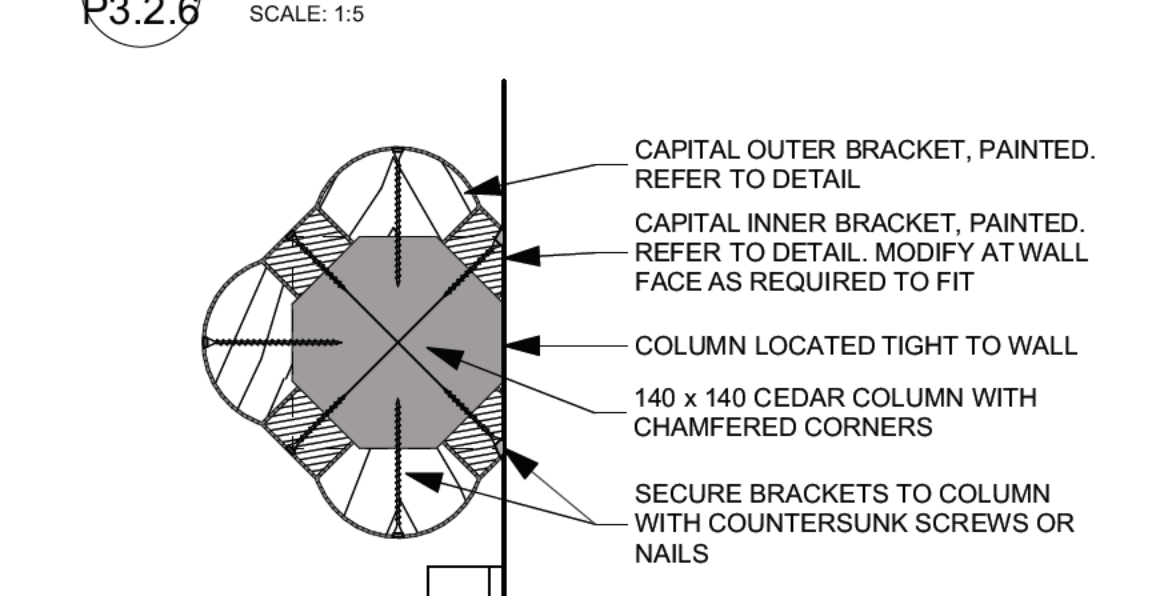
18 COLUMN PLAN TOP
P3.2.6 SCALE: 1:5



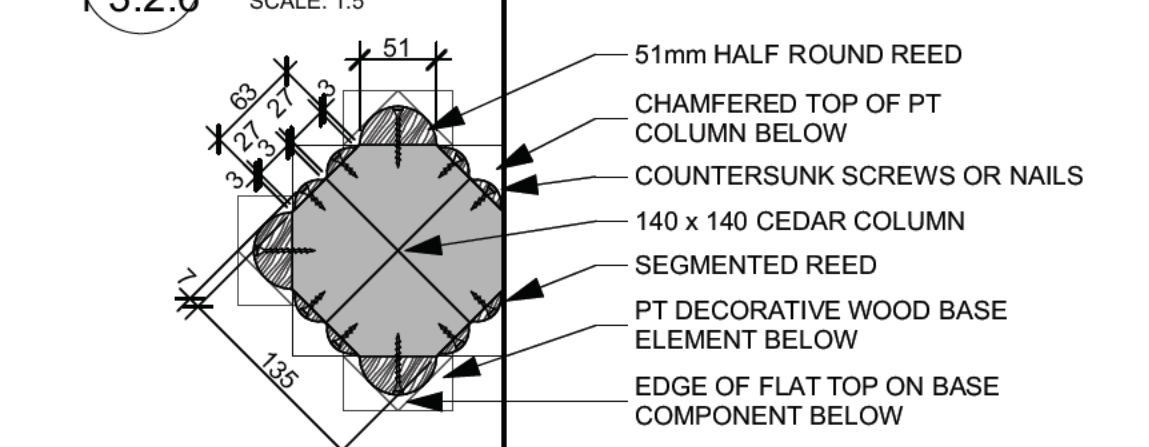
17 COLUMN FRIEZE PLAN
P3.2.6 SCALE: 1:5



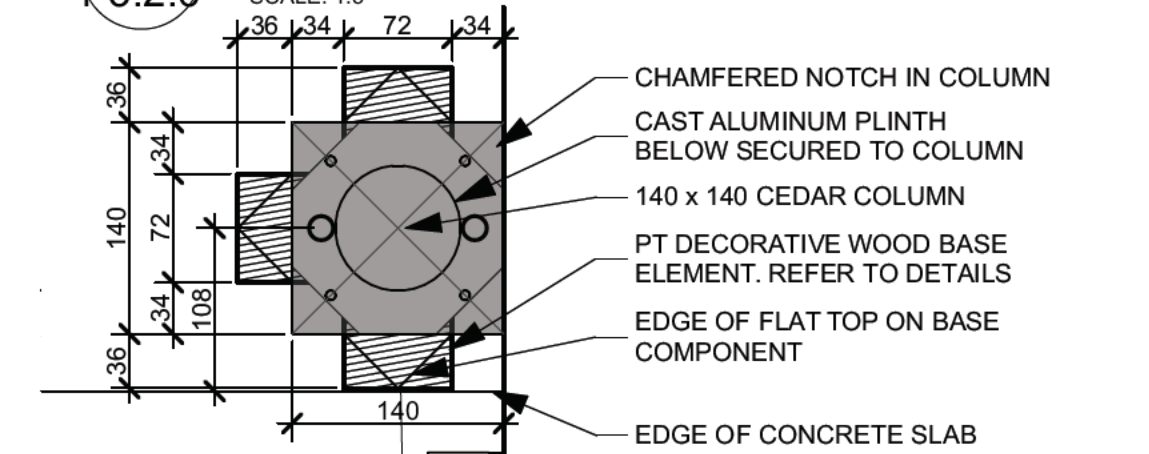
16 COLUMN CAPITAL PLAN
P3.2.6 SCALE: 1:5



15 COLUMN CAPITAL PLAN
P3.2.6 SCALE: 1:5



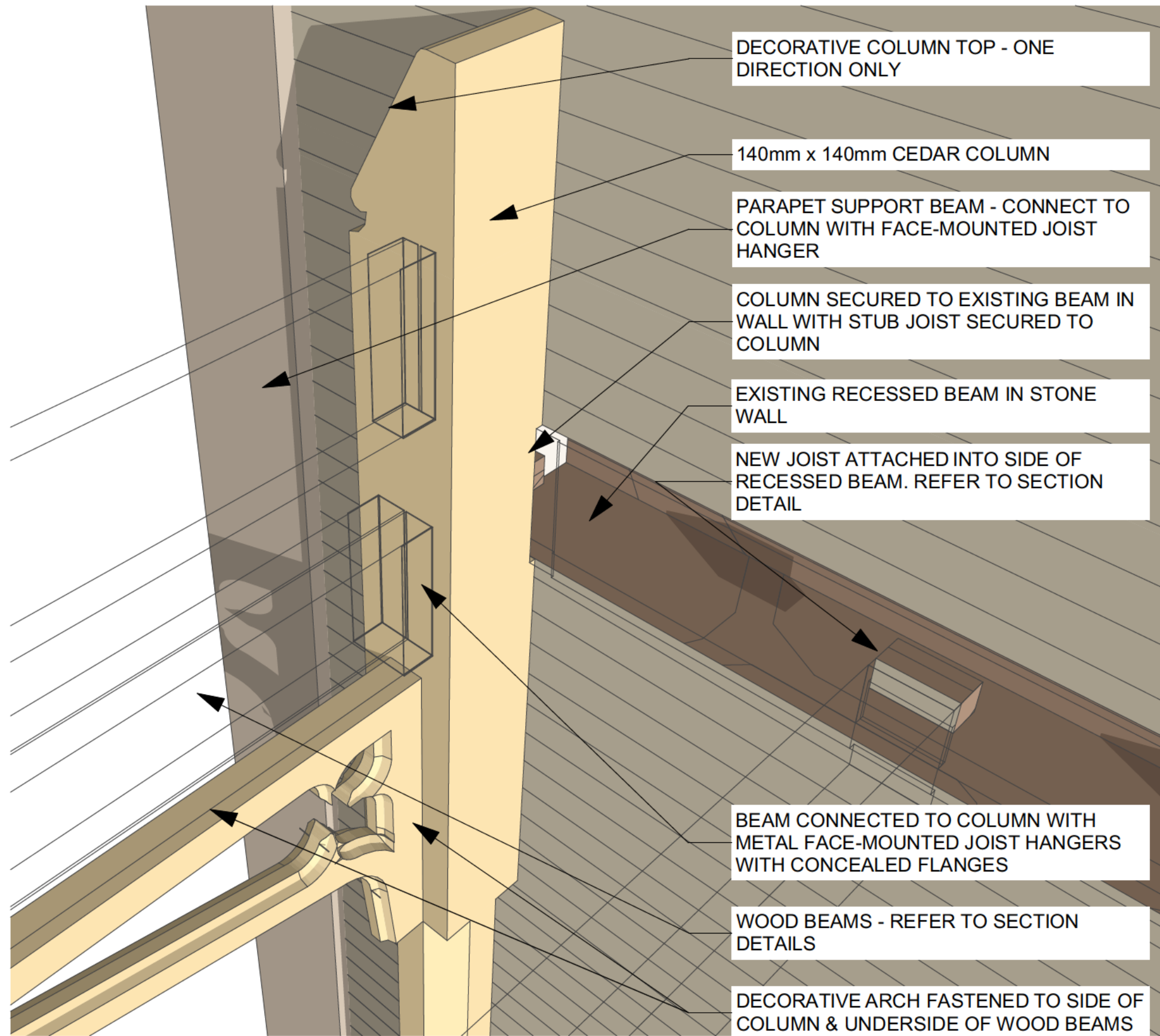
14 COLUMN SHAFT PLAN
P3.2.6 SCALE: 1:5



13 COLUMN BASE PLAN
P3.2.6 SCALE: 1:5

KILTON COTTAGE
VERANDAH RESTORATION
33 OAK AVENUE PARIS ONTARIO

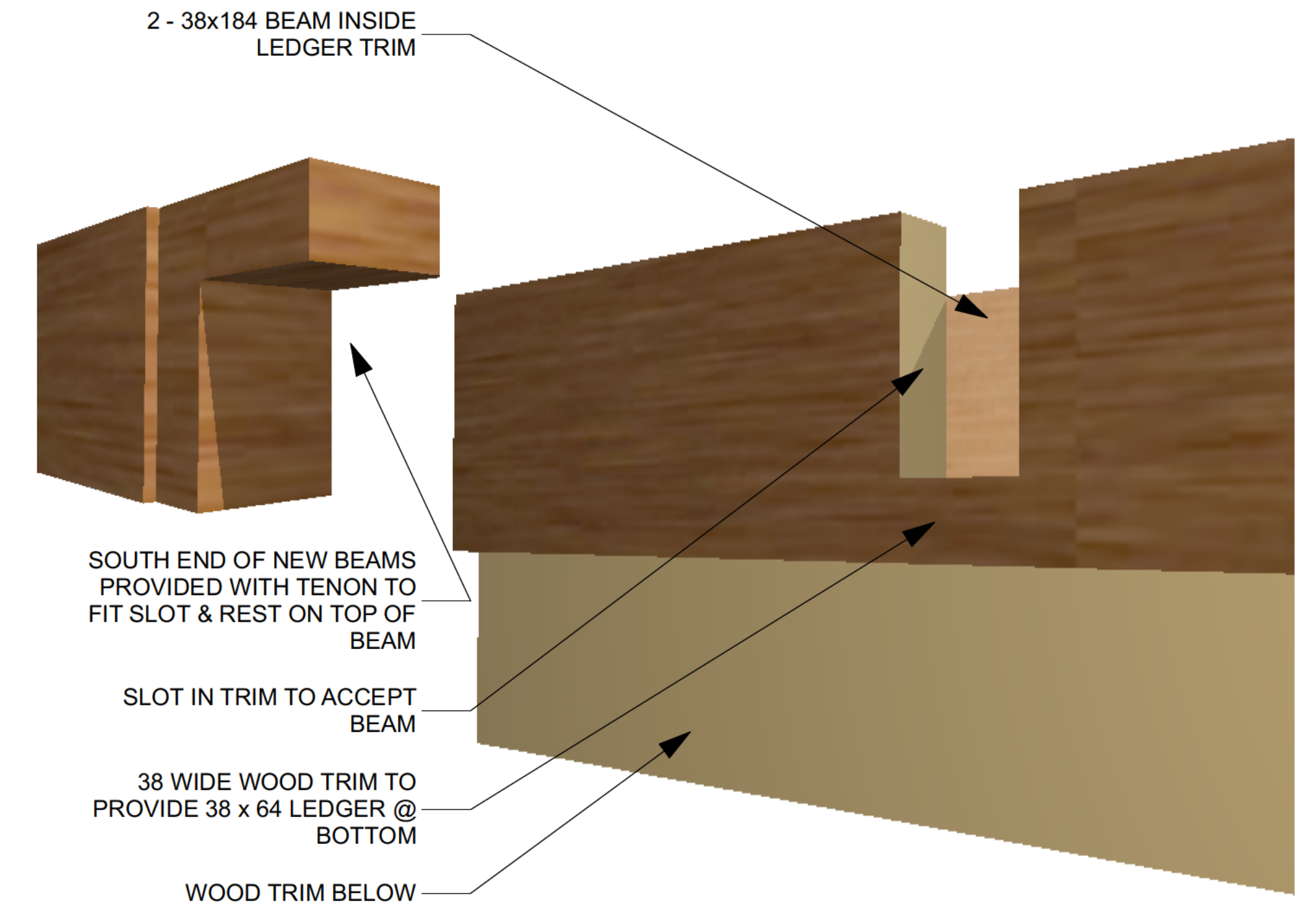




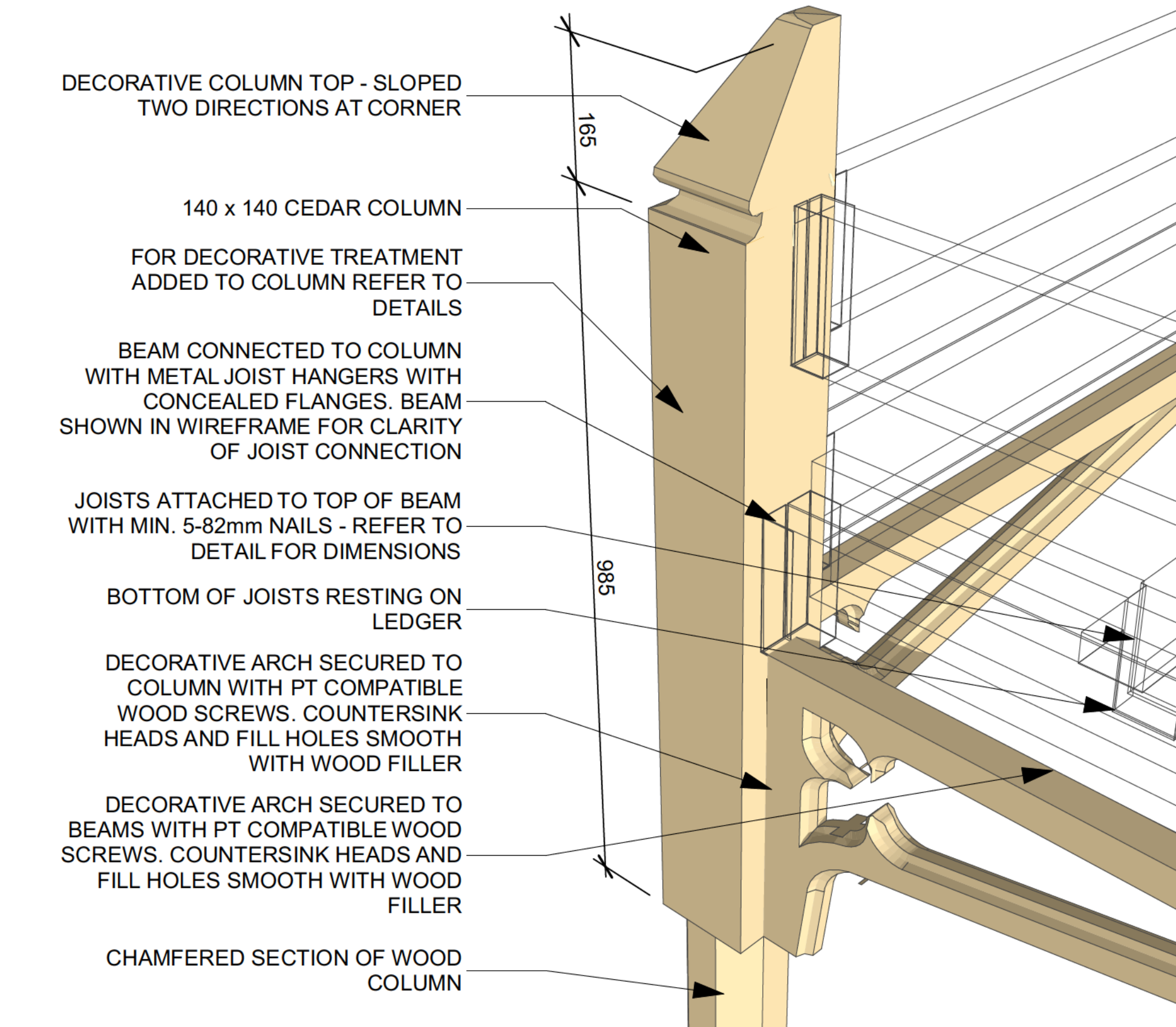
1 NORTH WEST CORNER COLUMN 3D VIEW
P3.2.7



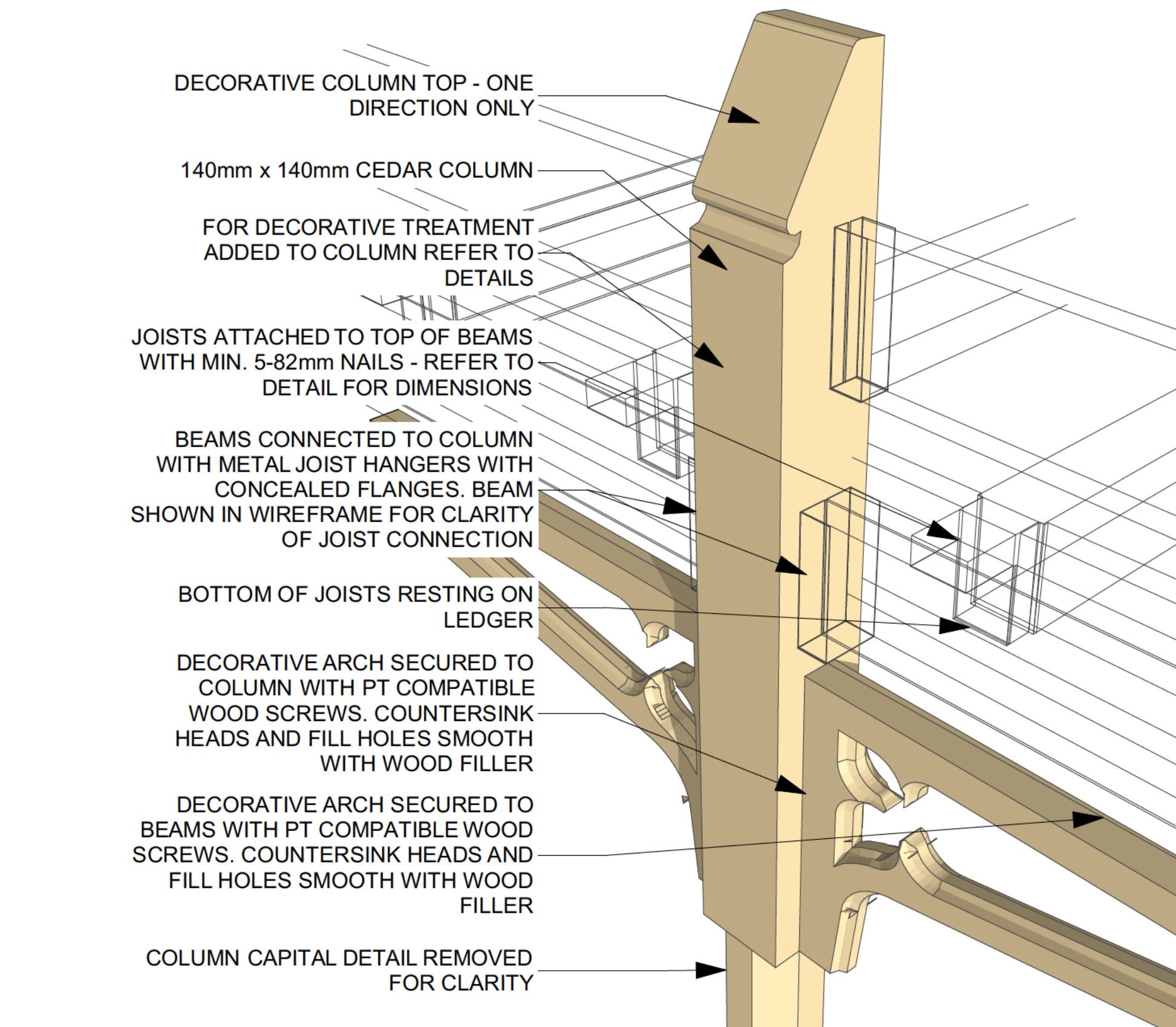
3 MORTISE IN RECESSED BEAM & NORTH END OF JOIST
P3.2.7



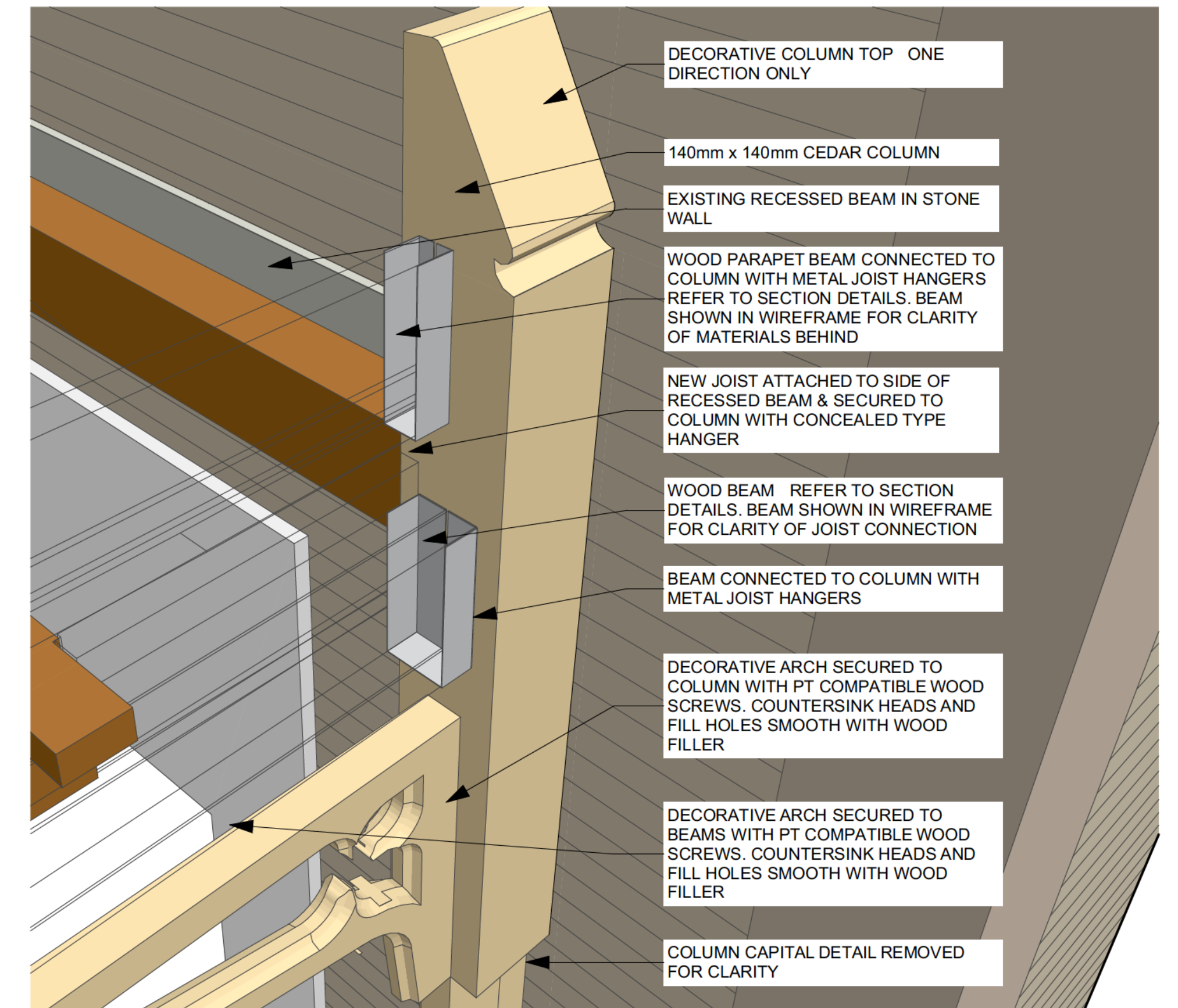
5 MORTISE IN NEW BEAM & SOUTH END OF JOIST
P3.2.7



2 SOUTH WEST CORNER COLUMN 3D VIEW
P3.2.7



4 CENTRE COLUMN 3D VIEW
P3.2.7



6 SOUTH EAST CORNER COLUMN 3D VIEW
P3.2.7

COLUMN CONNECTION 3D DETAILS

KILTON COTTAGE
VERANDAH RESTORATION
33 OAK AVENUE PARIS ONTARIO

CONTACT: DWIGHT LANDER



P3.2.7
2025-03-21