

BBY-LAW NUMBER 126-24

- of -

THE CORPORATION OF THE COUNTY OF BRANT

To relieve certain lands from the provisions of Section 50(5) of the Planning Act, R.S.O. 1990, as amended, Nith Peninsula Phase 1, Subdivision

WHEREAS under Section 50(5) of the *Planning Act*, R.S.O. 1990, *Chapter P. 13*, as amended, lands within a registered plan of subdivision are subject to part lot control;

AND WHEREAS Section 50(7) of the *Planning Act* R.S.O. 1990, as amended, grants the Council of a municipality the authority to enact By-Laws to relieve lands in a registered plan of subdivision from the provisions of part lot control.

NOW THEREFORE THE COUNCIL OF THE CORPORATION OF THE COUNTY OF BRANT HEREBY ENACTS as follows:

1. **THAT** the provisions of Section 50(5) of the *Planning Act*, R.S.O. 1990, as amended, shall not apply to the lands described as BLOCKS 193, 196 & 197, 2M-1988, designated as Parts 1 through 80, (inclusive) on the Draft Reference Plan, and detailed on attached *Schedule "A"*, Paris, County of Brant.
2. **THAT** this By-Law shall come into force on the day it is passed by the Council of the Corporation of the County of Brant and the subsequent registration of the by-law in the Land Registry Office for the County of Brant No. 2.

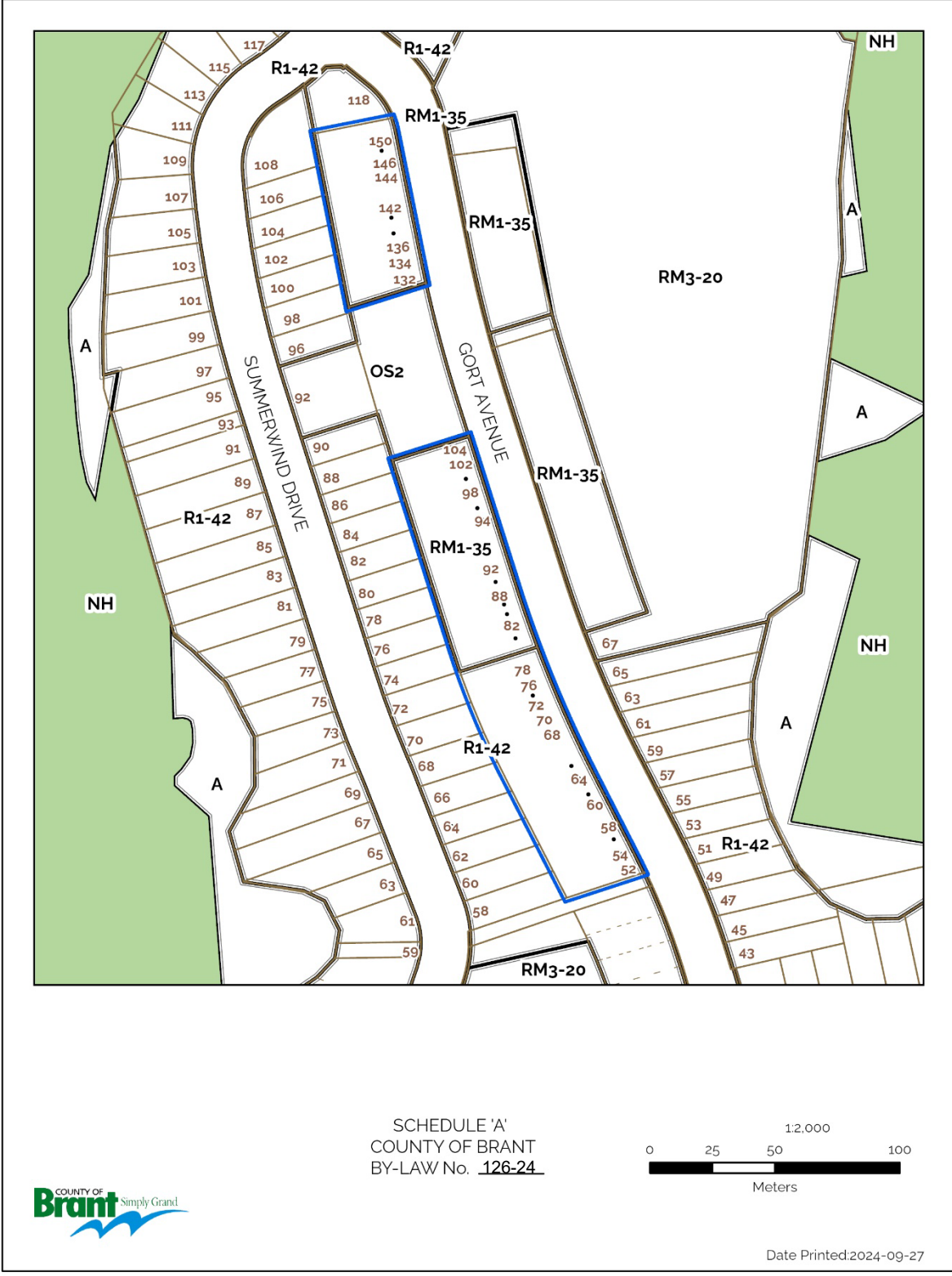
READ a first and second time, this 17th day of December 2024.

READ a third time and finally passed in Council, this 17th day of December 2024.

THE CORPORATION OF THE COUNTY OF BRANT

David Bailey, Mayor

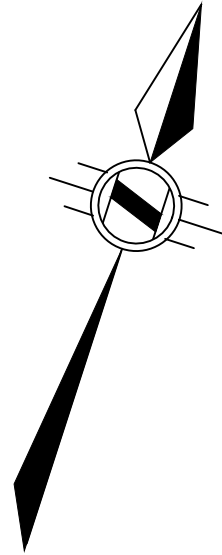
Sunayana Katikapalli, Clerk



PLAN OF SURVEY
OF
BLOCKS 193, 196 & 197
PLAN 2M-1988
IN THE
COUNTY OF BRANT

SCALE 1:400 METRIC

R.A. McLAREN, O.L.S. - 2024



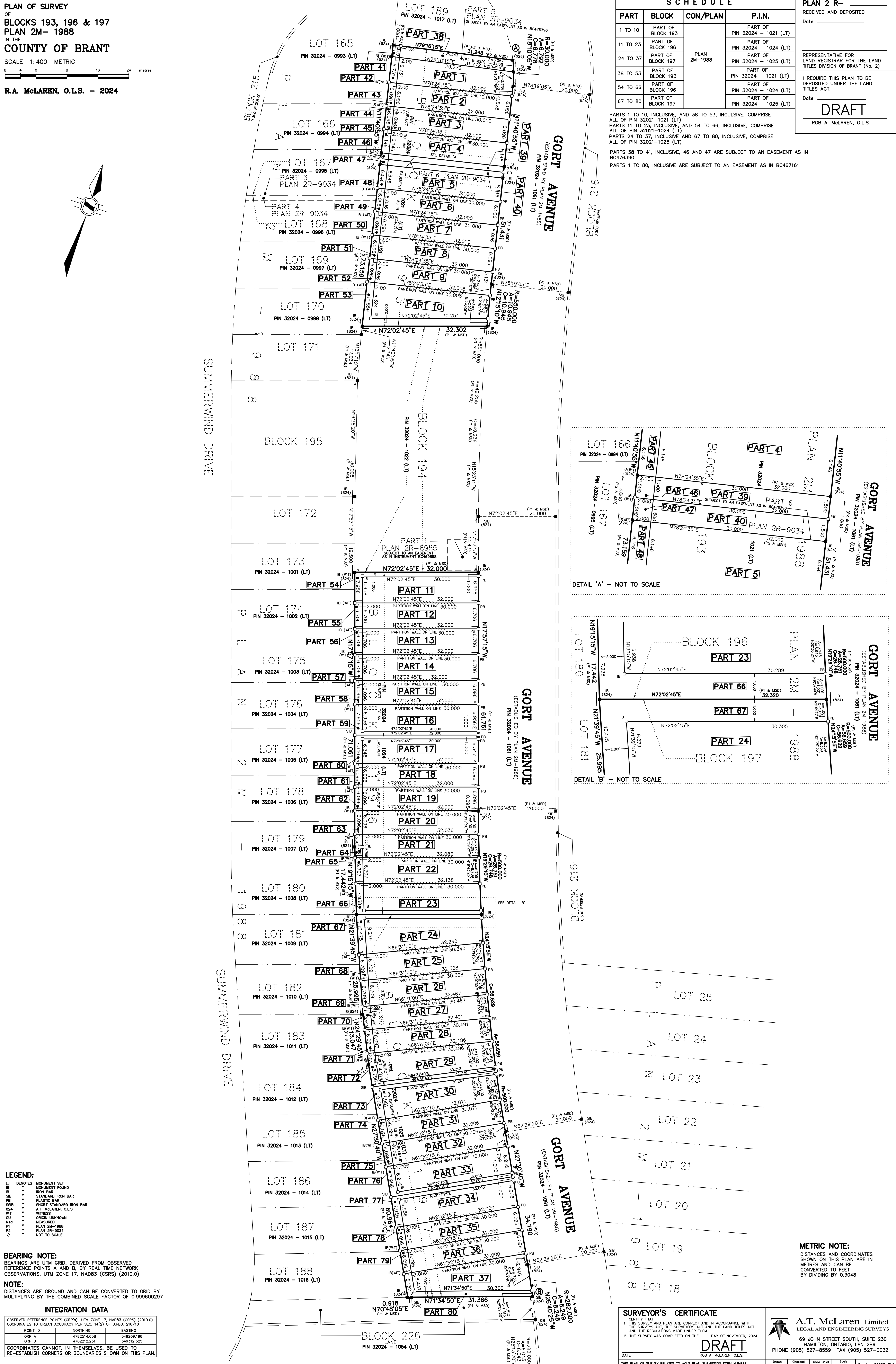
- LEGEND:**
- DENOTES MONUMENT FOUND
 - IB IRON BAR
 - SB STANDARD IRON BAR
 - SB PLASTIC BAR
 - SB SHORT STANDARD IRON BAR
 - SB A.T. McLAREN, O.L.S.
 - WT WITNESS
 - CU ORIGIN UNKNOWN
 - Med MEASURED
 - P1 PLAN 2M-1988
 - P2 PLAN 2M-9034
 - // NOT TO SCALE

BEARING NOTE:
BEARINGS ARE UTM GRID, DERIVED FROM OBSERVED REFERENCE POINTS A AND B, BY REAL TIME NETWORK OBSERVATIONS, UTM ZONE 17, NAD83 (CSRS) (2010.0)

NOTE:
DISTANCES ARE GROUND AND CAN BE CONVERTED TO GRID BY MULTIPLYING BY THE COMBINED SCALE FACTOR OF 0.999600297

INTEGRATION DATA

OBSERVED REFERENCE POINTS (ORP's): UTM ZONE 17, NAD83 (CSRS) (2010.0). COORDINATES TO URBAN ACCURACY PER SEC. 14(2) OF O.R.G. 216/70			
POINT ID	NORTHING	EASTING	
ORP A	4782514.658	5492209.196	
ORP B	4782212.251	5493125.525	
COORDINATES CANNOT, IN THEMSELVES, BE USED TO RE-ESTABLISH CORNERS OR BOUNDARIES SHOWN ON THIS PLAN.			



SCHEDULE			
PART	BLOCK	CON/PLAN	P.I.N.
1 TO 10	PART OF BLOCK 193	PLAN 2M-1988	PART OF PIN 32024 - 1021 (LT)
11 TO 23	PART OF BLOCK 196		PART OF PIN 32024 - 1024 (LT)
24 TO 37	PART OF BLOCK 197		PART OF PIN 32024 - 1025 (LT)
38 TO 53	PART OF BLOCK 193		PART OF PIN 32024 - 1021 (LT)
54 TO 66	PART OF BLOCK 196		PART OF PIN 32024 - 1024 (LT)
67 TO 80	PART OF BLOCK 197		PART OF PIN 32024 - 1025 (LT)

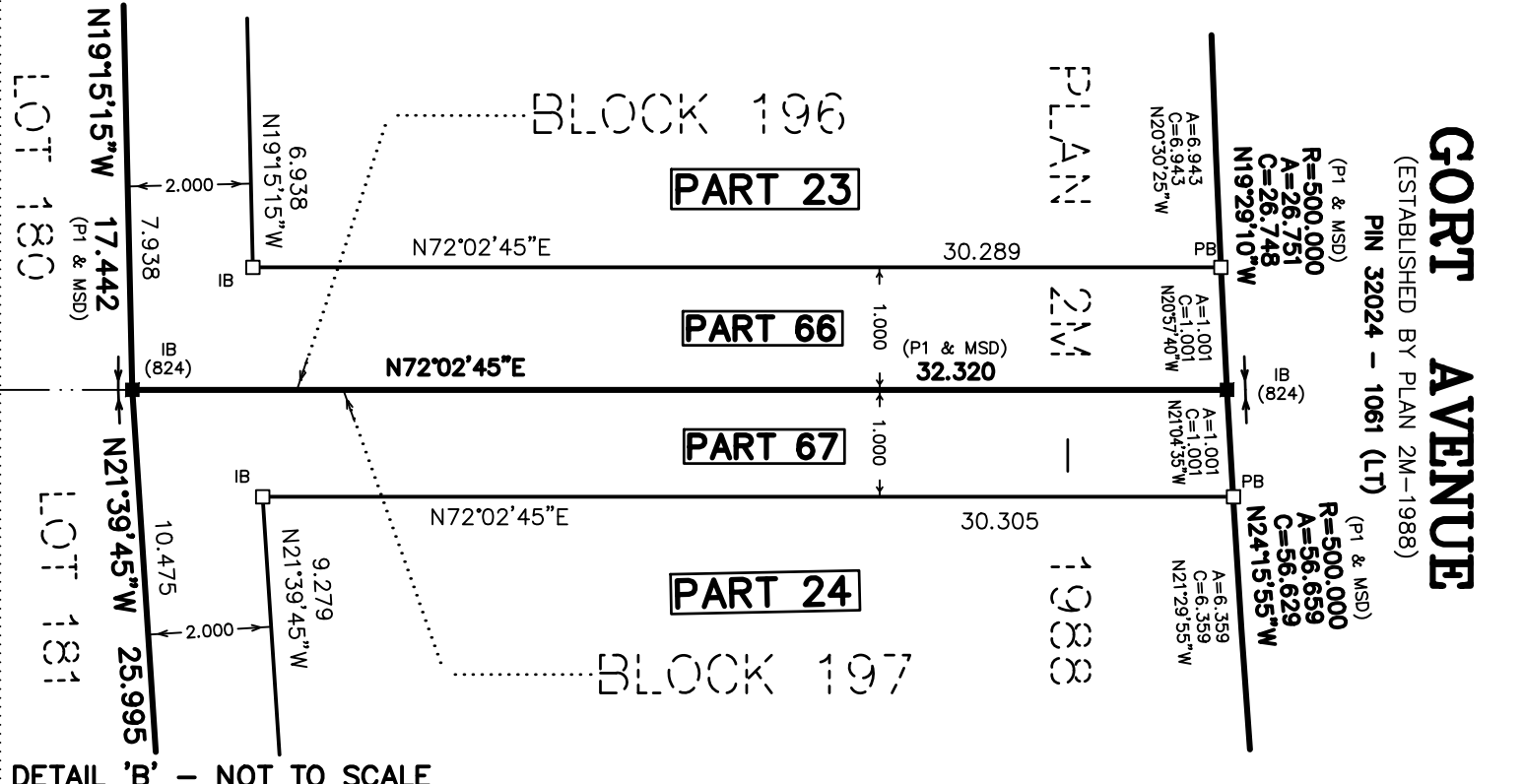
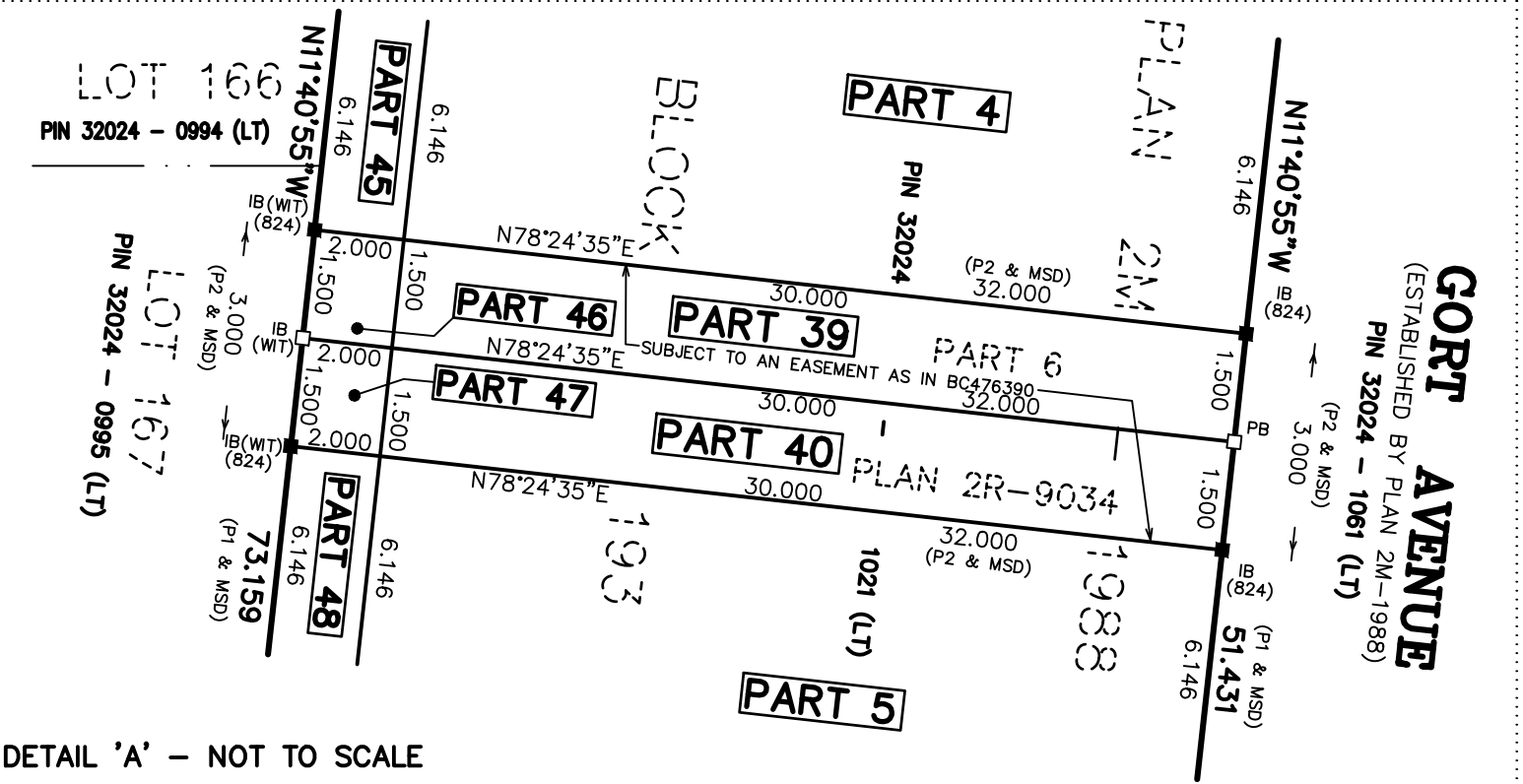
PLAN 2R-
RECEIVED AND DEPOSITED
Date _____

REPRESENTATIVE FOR LAND REGISTRAR FOR THE LAND TITLES DIVISION OF BRANT (No. 2)

I REQUIRE THIS PLAN TO BE DEPOSITED UNDER THE LAND TITLES ACT.
Date _____
DRAFT
ROB A. McLAREN, O.L.S.

PARTS 1 TO 10, INCLUSIVE, AND 38 TO 53, INCLUSIVE, COMPRISE ALL OF PIN 32021-1021 (LT)
PARTS 11 TO 23, INCLUSIVE, AND 54 TO 66, INCLUSIVE, COMPRISE ALL OF PIN 32021-1024 (LT)
PARTS 24 TO 37, INCLUSIVE AND 67 TO 80, INCLUSIVE, COMPRISE ALL OF PIN 32021-1025 (LT)

PARTS 38 TO 41, INCLUSIVE, 46 AND 47 ARE SUBJECT TO AN EASEMENT AS IN BC476390
PARTS 1 TO 80, INCLUSIVE ARE SUBJECT TO AN EASEMENT AS IN BC467161



METRIC NOTE:
DISTANCES AND COORDINATES SHOWN ON THIS PLAN ARE IN METRES AND CAN BE CONVERTED TO FEET BY DIVIDING BY 0.3048

SURVEYOR'S CERTIFICATE
I CERTIFY THAT:
1. THIS SURVEY AND PLAN ARE CORRECT AND IN ACCORDANCE WITH THE SURVEYORS ACT AND THE LAND TITLES ACT AND THE REGULATIONS MADE UNDER THEM.
2. THE SURVEY WAS COMPLETED ON THE _____ DAY OF NOVEMBER, 2024.
DRAFT
ROB A. McLAREN, O.L.S.

A.T. McLaren Limited
LEGAL AND ENGINEERING SURVEYS
69 JOHN STREET SOUTH, SUITE 230
HAMILTON, ONTARIO, L8N 2B9
PHONE (905) 527-8559 FAX (905) 527-0032