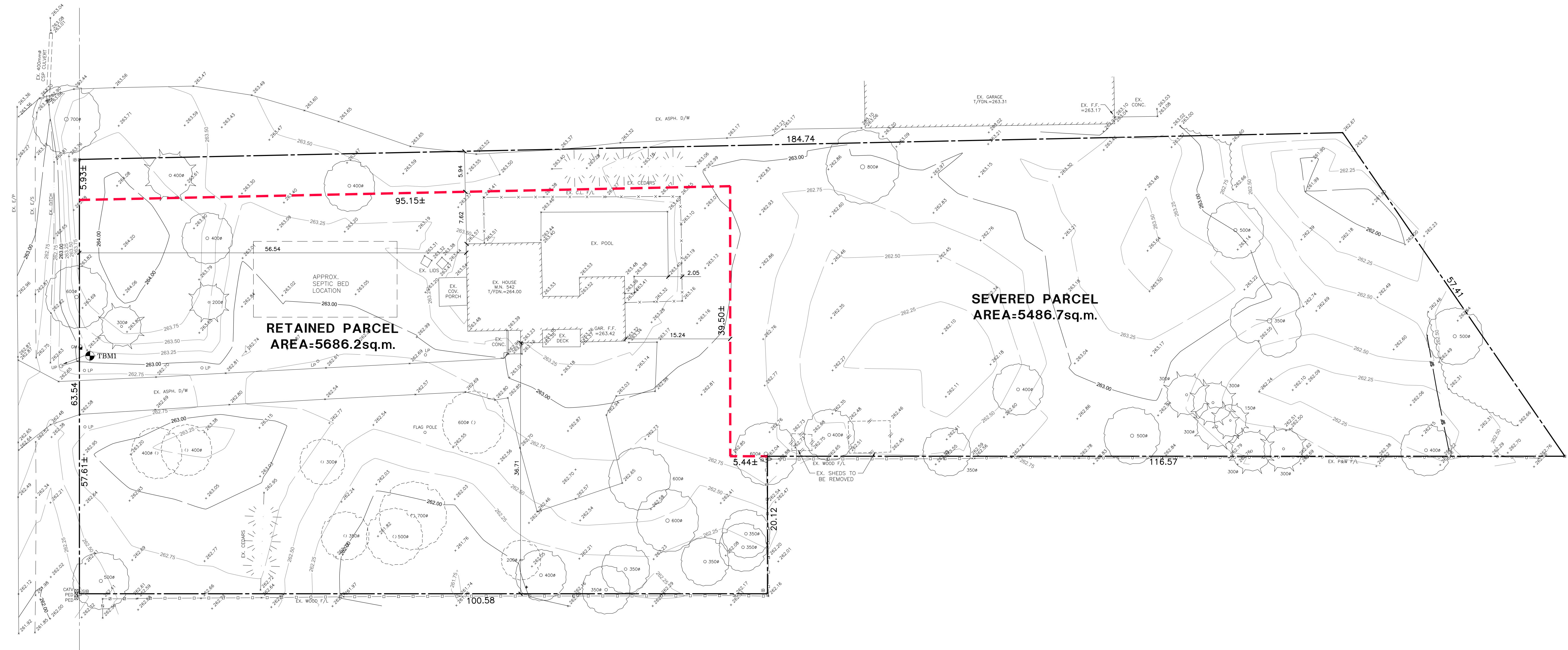


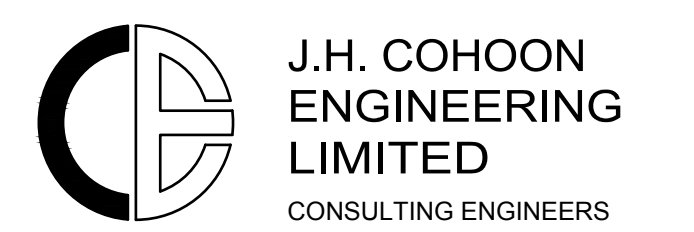
HIGHWAY No. 2



LEGEND:
EXISTING ELEVATIONS

T.B.M. No. 1 ELEV. = 263.18m (GEO)
NAIL IN UTILITY POLE ON THE NORTH SIDE OF HIGHWAY No. 2 IN FRONT OF SUBJECT PROPERTY AS SHOWN.

NO.	REVISION	DATE (MM/DD/YY)	BY
1	PARCEL LINES ADJUSTED	09/13/24	S.L.M.



J.H. COHOON ENGINEERING LIMITED
CONSULTING ENGINEERS
440 HARDY ROAD, UNIT #1, BRANTFORD - ONTARIO, N3T 5L8
TEL: (519) 753-2656 FAX: (519) 753-4263 www.cohooneg.com

PROJECT:
PROPOSED SEVERANCE
542 PARIS ROAD
COUNTY OF BRANT

CLIENT:
HOLLETT

SEVERANCE PLAN

DESIGN: R.W.P.	SCALE: 1:300
DRAWN: S.L.M.	JOB No:
CHECKED: R.W.P.	16164
SHEET: 1 of 1	DWG. No:
DATE: JULY 29, 2024	16164-SEV1