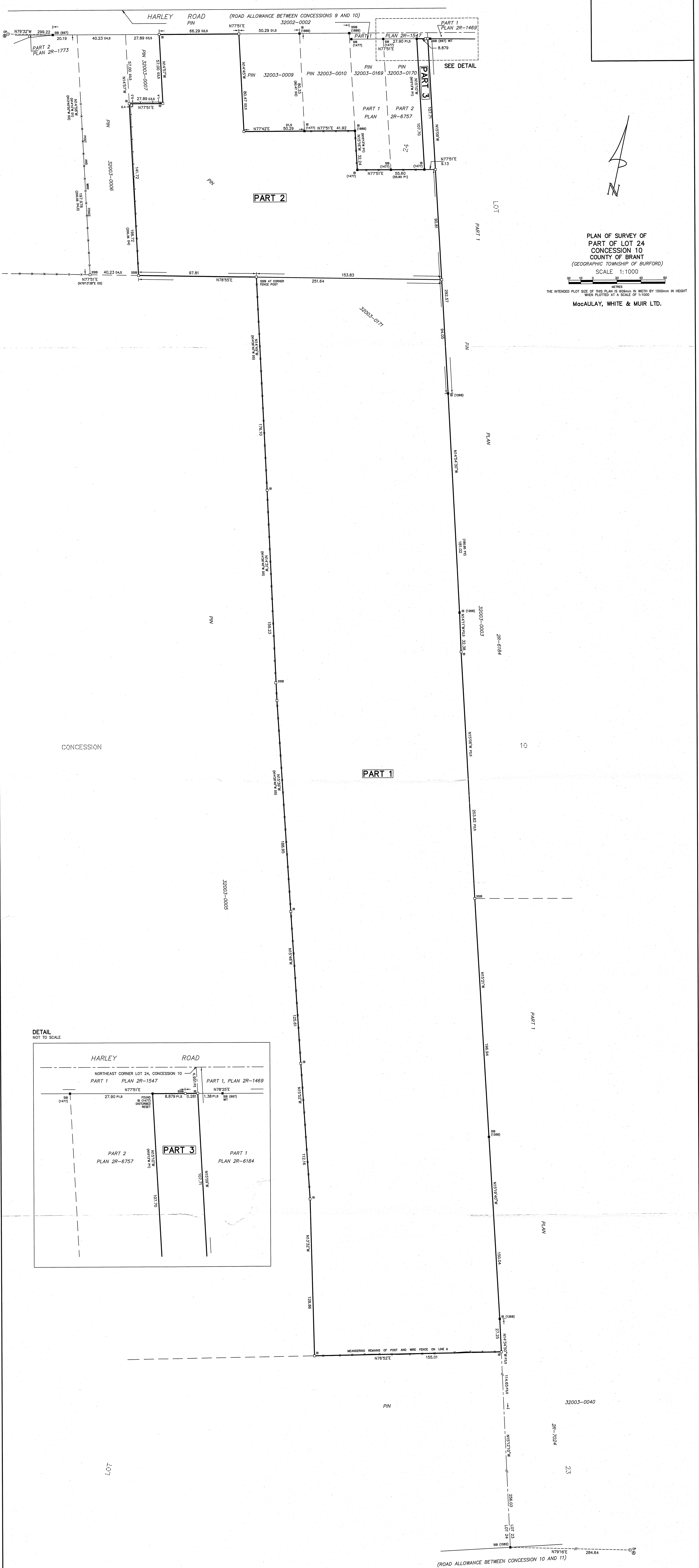
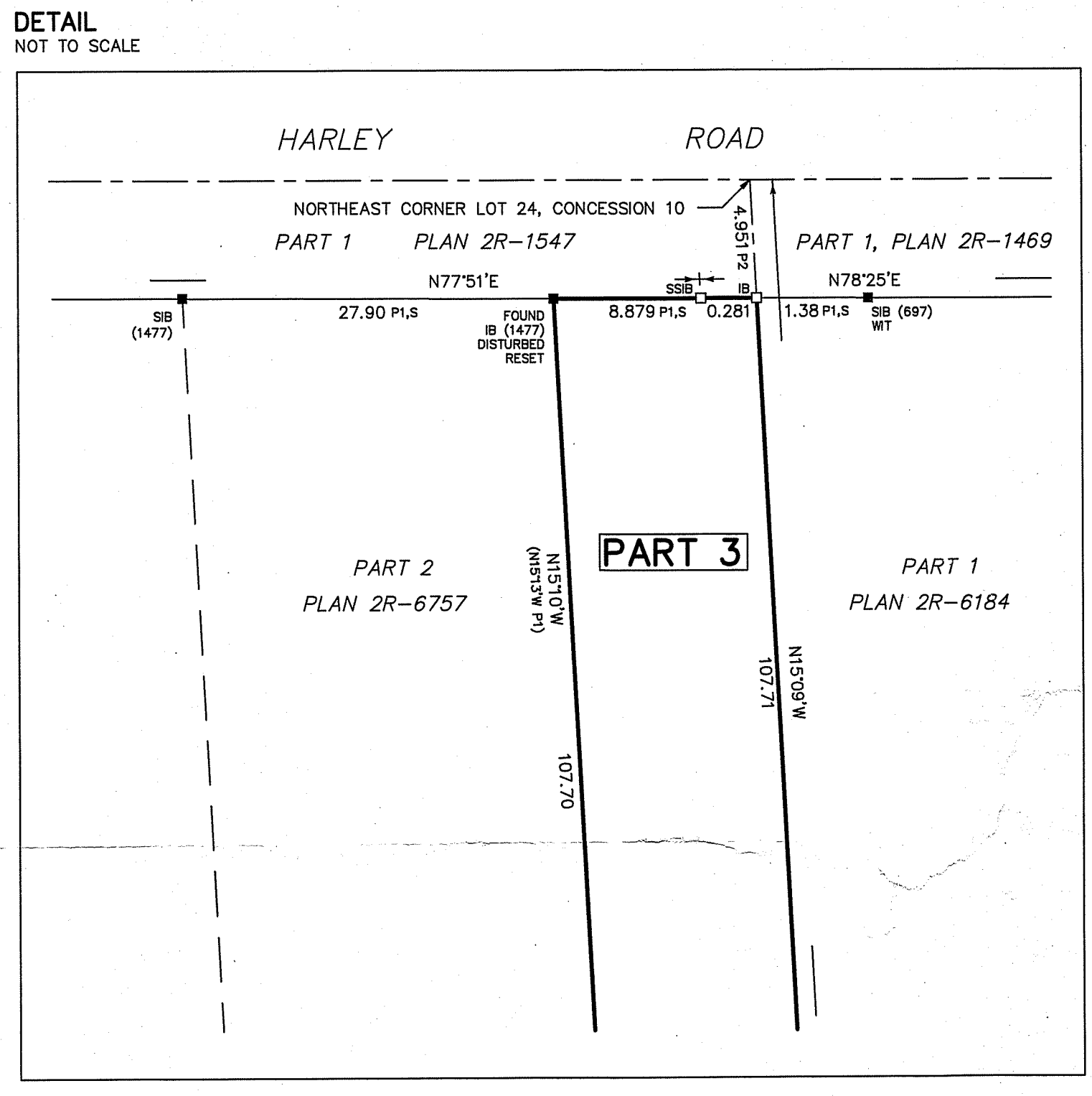


SCHEDULE				
PART	LOT	CONCESSION	PIN	AREA IN HECTARES
1				13.636
2	24	10	32003-0171	3.415
3				0.098

PARTS 1, 2 AND 3 COMPRISE ALL OF PIN 32003-0171.



PLAN OF SURVEY OF
PART OF LOT 24
CONCESSION 10
COUNTY OF BRANT
(GEOGRAPHIC TOWNSHIP OF BURFORD)
SCALE 1:1000
THE INTENDED PLOT SIZE OF THIS PLAN IS 600mm IN WIDTH BY 1500mm IN HEIGHT
WHEN PLOTTED AT A SCALE OF 1:1000
MacAULAY, WHITE & MUIR LTD.



- LEGEND**
- SB - STANDARD IRON BAR
 - SSB - SHORT STANDARD IRON BAR
 - IB - IRON BAR
 - CC - CEMENT CROSS
 - PB - PLASTIC BAR
 - CP - CONCRETE PIN
 - - PLANTED
 - - FOUND
 - - ROUND
 - WT - WITNESS
 - S - SET
 - DB - J.D. BARNES LIMITED
 - 1268 - T.H. BROOKS, O.L.S.
 - 697 - G.B. MACAULAY O.L.S.
 - 1582 - K.S. HUSTED, O.L.S.
 - 1477 - MacAULAY, WHITE & MUIR LTD.
 - X- - POST AND WIRE FENCE UNLESS NOTED
 - D1 - INST. 32003-0009 (INST. B1320862)
 - D2 - INST. 32003-0171 (INST. A457075)
 - D3 - INST. 32003-0007 (INST. A168221)
 - D4 - INST. 32003-0006 (INST. A339560)
 - D5 - INST. 32003-0005 (INST. A463662)
 - P1 - PLAN 2R-6757
 - P2 - PLAN 2R-6184
 - P3 - PLAN 2R-7024

NOTE:
BEARINGS ARE GRID, DERIVED FROM OBSERVED REFERENCE POINTS A AND B BY REAL TIME NETWORK OBSERVATION, UTM ZONE 17, NAD83 (CSRS) (2010).
DISTANCES ARE GROUND AND CAN BE CONVERTED TO GRID BY MULTIPLYING BY THE COMBINED SCALE FACTOR OF 0.99958.
ALL DIMENSIONS ARE MEASURED UNLESS QUALIFIED.
ALL FENCES ARE "ON LINE" UNLESS TIES TO THE PROPERTY LINE ARE SHOWN.
ALL PINS ARE (L1) UNLESS NOTED (R).
FOR COMPARISON PURPOSES THE BEARINGS ON PLANS 2R-1469, 2R-1547, 2R-6184, 2R-6757 AND 2R-7024 HAVE BEEN ROTATED COUNTER-CLOCKWISE 0.22°.

POINT ID	NORTHING	EASTING
A	4764591.86	536468.59
B	4765801.26	535217.74

CO-ORDINATES CANNOT, IN THEMSELVES, BE USED TO RE-ESTABLISH CORNERS OR BOUNDARIES SHOWN ON THIS PLAN.

SURVEYOR'S CERTIFICATE
I CERTIFY THAT:
1. THIS SURVEY AND PLAN ARE CORRECT AND IN ACCORDANCE WITH THE SURVEY ACT, THE SURVEYORS ACT AND THE LAND TITLES ACT AND THE REGULATIONS MADE UNDER THEM.
2. THE SURVEY WAS COMPLETED ON THE DAY OF . 2024.

OCTOBER 16, 2024
JOHN W. MUIR
ONTARIO LAND SURVEYOR

THIS PLAN OF SURVEY RELATES TO AOLS PLAN SUBMISSION NUMBER V-
MacAulay, White & Muir Ltd.
ONARIO LAND SURVEYOR - CANADA LAND SURVEYORS
A Fully Owned Subsidiary of J.S. Barron Limited
480 EAGLE ROAD, UNIT 2, BRANTFORD, ONTARIO N5L 5L8
T: (519) 752-0000 www.jwbm.com

DATE:	CCS
DRAWN:	JM
FILE NO.:	22-50-271-00