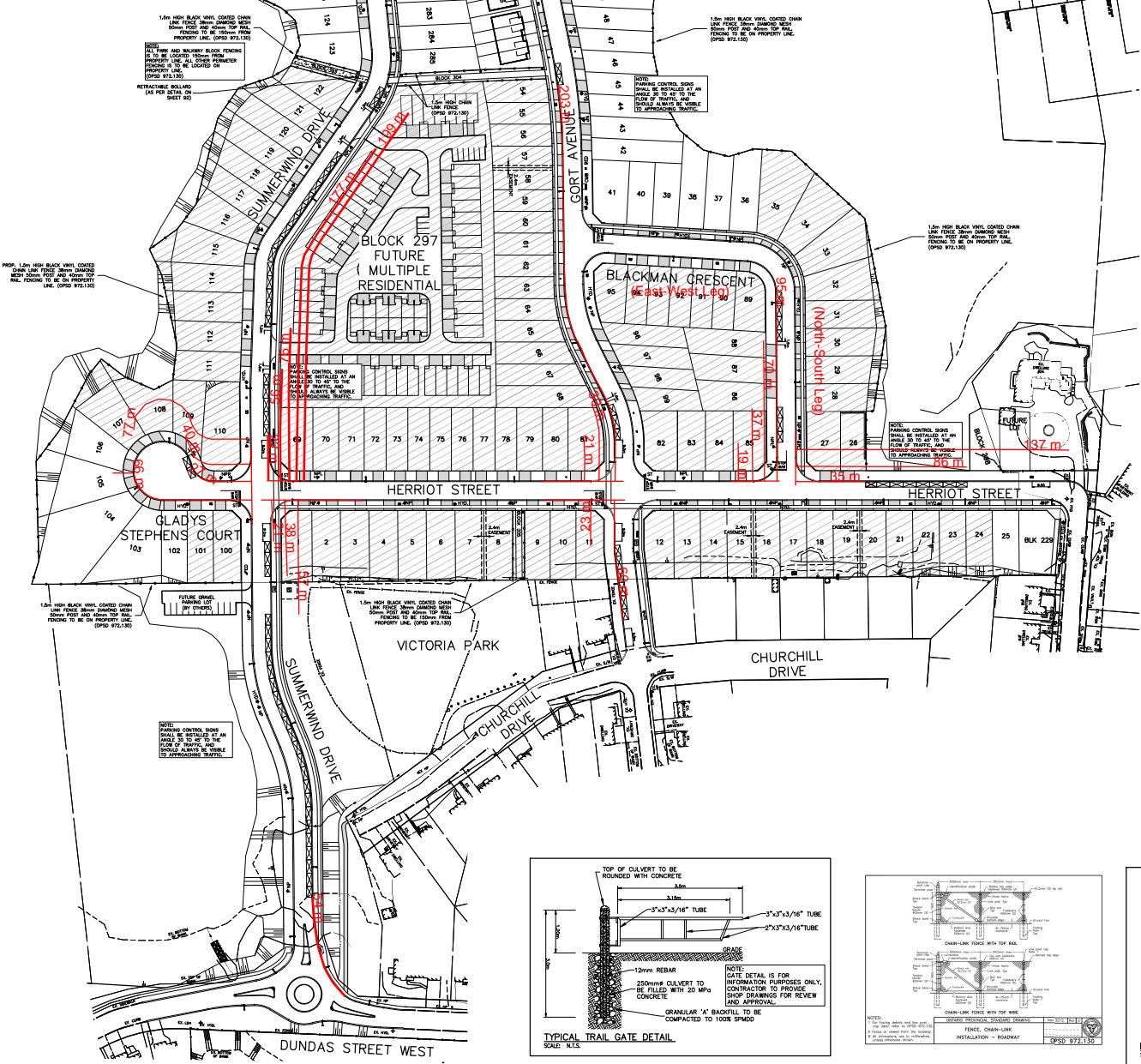
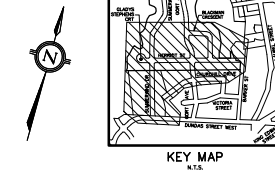


REFER SHEET 93



- LEGEND:**
- PARKING STALL
  - EXISTING/PROPOSED HYDRANT
  - EXISTING/PROPOSED LIGHT STANDARD
  - EXISTING/PROPOSED TRANSFORMER
  - PROPOSED 3 MODULE COMMUNITY MAILBOX
  - PROPOSED UTILITY PEDESTAL
  - PROPOSED RETAINING WALL
  - ASPHALT DRIVEWAY
  - PROPOSED STOP SIGN (500m x 500m M.U.T.C.D. R6-1) PROPOSED
  - PROPOSED NO PARKING LEFT (30m x 30m) M.U.T.C.D. R6-51
  - PROPOSED NO PARKING RIGHT (30m x 30m) M.U.T.C.D. R6-51
  - PROPOSED NO PARKING LEFT (30m x 30m) M.U.T.C.D. R6-51
  - PROPOSED NO PARKING RIGHT (30m x 30m) M.U.T.C.D. R6-51
  - TEMPORARY DEAD END BARRICADE (CPD 912.250) w/ A CHECKERED BOARD SIGN (MA-8)
  - 600mm WIDE STOP BAR AND 10m CENTERLINE PAVEMENT MARKING
  - LIMITS OF SUBSEQUENT PHASES



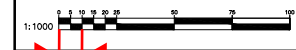
NO. OF DETACHED UNITS = 289  
 NO. OF TOWNHOUSE UNITS = 62  
 TOTAL NO. OF UNITS = 351  
 NO. OF PARKING SPACES PROVIDED = 135

- NOTES:**
- PARKING STALLS ARE 2.8m WIDE BY 5.5m LONG.
  - PARKING STALLS WHERE SHOWN AS PARALLEL PARKING ARE 2.8m WIDE BY 6.7m LONG.
  - ALL PARKING STALLS SHALL BE A MINIMUM OF 1.5m FROM DRIVEWAY OR CURB CUTS.
  - A MINIMUM OF 8m FROM AN INTERSECTION (15m WHERE THERE ARE TRAFFIC SIGNALS), AS MEASURED FROM THE POINT OF INTERSECTION FORMED BY THE PROJECTION OF THE CURB LINES OR EDGES OF PAVEMENT WHERE THERE IS NO CURB.
  - PARKING SPACES ARE NOT PERMITTED:
    - ACROSS FROM A T INTERSECTION;
    - WITHIN 5m OF A BUS STOP;
    - WITHIN 5m OF A BIKEWAY;
    - ALONG SCHOOL FRONTAGES;
    - IN FRONT OF A BAR/RESTAURANT WALKWAY OR TRAIL WHICH CONTINUES ON THE OPPOSITE SIDE OF THE STREET;

NO.	DATE	BY	REVISIONS
8.	NOV/23	CD	UPDATED HYDRO ON COMPOSITE UTILITY PLAN
7.	OCT/23	CD	COMPOSITE UTILITY PLAN
6.	AUG/23	CD	AS PER COUNTY COMMENTS
5.	SEPT/22	CD	AS PER COUNTY COMMENTS
4.	JUN/22	CD	AS PER COUNTY SANITARY & FENCING COMMENTS
3.	MAY/22	CD	AS PER COUNTY COMMENTS

- NOTES TO CONTRACTOR:**
- CONTRACTOR AND SUBCONTRACTORS SHALL NOT SCALE FROM THE DRAWING.
  - ANY INCONSISTENCIES AND OMISSIONS FOUND ON THE DRAWINGS MUST BE REPORTED TO THE ENGINEER FOR CLARIFICATION BEFORE COMMENCING THE WORK.
  - PRIOR TO THE START OF CONSTRUCTION, THE CONTRACTOR MUST CHECK AND VERIFY ALL CONDITIONS AND EXISTING UTILITIES AND REPORT ALL FINDINGS TO THE ENGINEER. ONCE CONSTRUCTION HAS COMMENCED THE CONTRACTOR ACCEPTS RESPONSIBILITY FOR ALL UNDERGROUND UTILITIES AND SITE CONDITIONS.
  - THE POSITION OF POLE LINES, CABLES, WATERMANS, CABLES AND OTHER UNDERGROUND AND OVERHEAD UTILITIES AND STRUCTURES ARE NOT NECESSARILY SHOWN ON THE DRAWINGS. THESE SHOWN ON THE DRAWING, THE ACCURACY OF SUCH UTILITIES AND STRUCTURES IS NOT GUARANTEED. BEFORE STARTING WORK, THE CONTRACTOR SHALL VERIFY THE EXISTENCE OF THE EXACT LOCATION OF ALL SUCH UTILITIES AND STRUCTURES AND ASSUME ALL LIABILITY FOR DAMAGE TO THEM.
  - ALL DRAWINGS REMAIN THE PROPERTY OF THE ENGINEER AND SHALL NOT BE REPRODUCED, COPIED, OR REVEALED WITHOUT THE WRITTEN CONSENT OF S. LLENELLYN & ASSOCIATES LIMITED.
  - OPERATION OF EXISTING WATERMAIN VALVES SHALL BE BY THE COUNTY OF BRANT STAFF ONLY.

DESIGN	CD/S	CHK'D	SL	DATE
DRAWN	CD/BEK	CHK'D		AUGUST, 2020



**APPROVALS**

10 m

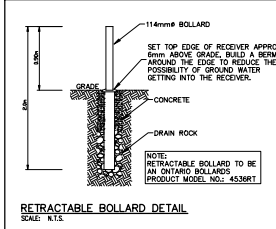
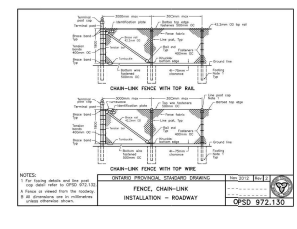
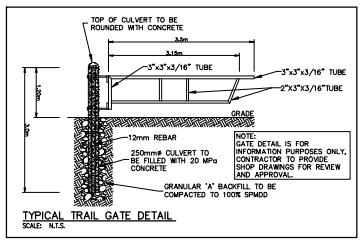
S. LLENELLYN & ASSOCIATES LIMITED  
 CONSULTING ENGINEERS  
 3228 South Service Road, Suite #105 East Wing, Burlington, Ont., L7N 3J8  
 Tel: (905) 631-8978  
 Fax: (905) 631-8927  
 email: info@slen.com

PARIS,  
 COUNTY OF BRANT

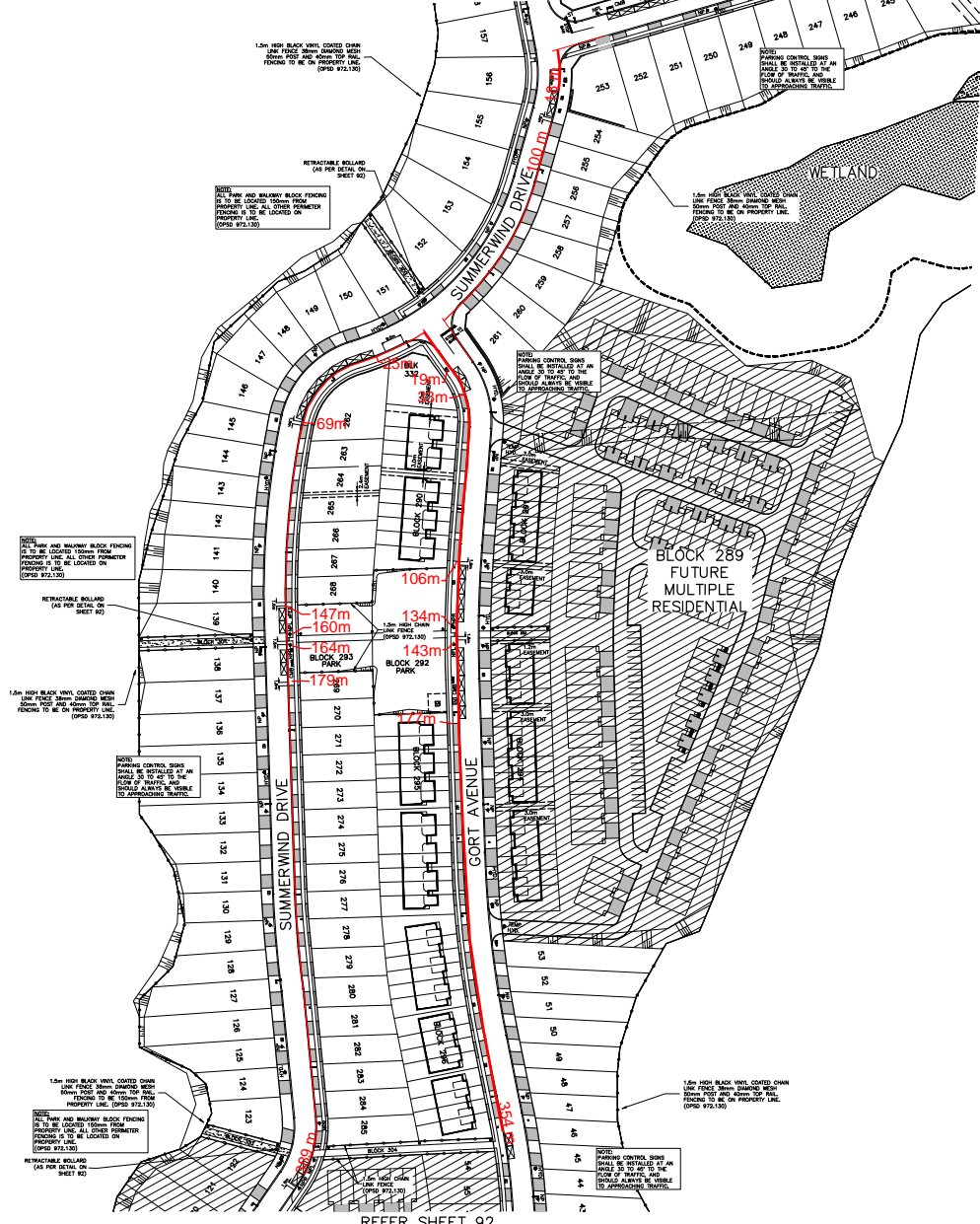
PROJECT NAME  
 LOSANI HOMES (PARIS) LIMITED  
 NITH PENINSULA  
 DRAFT PLAN No.: PS-1-10 & PS-2-10

TITLE  
 PARKING & FENCING PLAN  
 (SHEET 1 OF 3)

PROJECT No. 16002 DRAWING No. P-1 SHEET No. 92



REFER SHEET 94



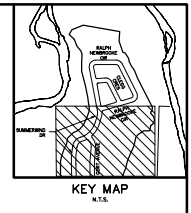
REFER SHEET 92

LEGEND:

- ☐ PARKING STALL
- EXISTING/PROPOSED HYDRANT
- EXISTING HYDRO POLE
- EXISTING/PROPOSED LIGHT STANDARD
- EXISTING/PROPOSED TRANSFORMER
- PROPOSED 3 MODULE COMMUNITY MAILBOX
- PROPOSED UTILITY PEDESTAL
- PROPOSED RETAINING WALL
- ASPHALT DRIVEWAY
- PROPOSED STOP SIGN (50cm x 50cm) M.U.T.C.D. Rb-1 PROPOSED
- PROPOSED NO PARKING LEFT/FRONT (50cm x 30cm) M.U.T.C.D. Rb-51
- PROPOSED NO PARKING RIGHT (50cm x 30cm) M.U.T.C.D. Rb-51
- PROPOSED NO PARKING LEFT (50cm x 30cm) M.U.T.C.D. Rb-51
- TEMPORARY DEAD END BARRICADE (OPSID 912.252) 1/4 CHECKERED BOARD SIGN (WA-8)
- 600mm WIDE STOP BAR AND 10cm CENTURLINE PAVEMENT MARKING
- ▨ LIMITS OF SUBSEQUENT PHASES

NO. OF DETACHED UNITS = 289  
 NO. OF TOWNHOUSE UNITS = 62  
 TOTAL NO. OF UNITS = 351  
 NO. OF PARKING SPACES PROVIDED = 135

- NOTES:
- PARKING STALLS ARE 2.8m WIDE BY 5.5m LONG.
  - PARKING STALLS WHERE SHOWN AS PARALLEL PARKING ARE 2.8m WIDE BY 6.7m LONG.
  - ALL PARKING STALLS SHALL BE A MINIMUM OF 1.5m FROM DRIVEWAY OR CURB CUTS.
  - A MINIMUM OF 8m FROM AN INTERSECTION (15m WHERE THERE ARE TRAFFIC SIGNALS), AS MEASURED FROM THE POINT OF INTERSECTION FORMED BY THE PROJECTION OF THE CURB LINES OR EDGES OF PAVEMENT WHERE THERE IS NO CURB.
  - PARKING SPACES ARE NOT PERMITTED:
    - ACROSS FROM A T-INTERSECTION;
    - WITHIN 10' OF A BUS STOP;
    - ALONG SCHOOL FRONTAGES;
    - IN FRONT OF A MULTISTORY PEDESTRIAN MALWAY OR TRAIL WHICH CONTINUES ON THE OPPOSITE SIDE OF THE STREET;



NO.	DATE	BY	REVISIONS
8.	NOV/23	CD	UPDATED HYDRO ON COMPOSITE UTILITY PLAN
7.	OCT/23	CD	COMPOSITE UTILITY PLAN
6.	AUG/23	CD	AS PER COUNTY COMMENTS
5.	SEPT/22	CD	AS PER COUNTY COMMENTS
4.	JUN/22	CD	AS PER COUNTY SANITARY & FENCING COMMENTS
3.	MAY/22	CD	AS PER COUNTY COMMENTS

NOTES TO CONTRACTOR:

- CONTRACTOR AND SUBCONTRACTORS SHALL NOT SCALE FROM THE DRAWING.
- ANY INCONSISTENCIES AND OMISSIONS FOUND ON THE DRAWINGS MUST BE REPORTED TO THE ENGINEER FOR CLARIFICATION BEFORE COMMENCING THE WORK.
- PRIOR TO THE START OF CONSTRUCTION, THE CONTRACTOR MUST CHECK AND VERIFY ALL DIMENSIONS AND LOCATIONS AND REPORT ALL FINDINGS TO THE ENGINEER. ONCE CONSTRUCTION HAS COMMENCED THE CONTRACTOR ACCEPTS RESPONSIBILITY FOR ALL DIMENSIONS, ELEVATIONS, AND SITE CONDITIONS.
- THE POSITION OF POLE LINES, CABLES, WIREMANS, CEMENT AND OTHER UNDERGROUND AND OVER-GROUND UTILITIES AND STRUCTURES ARE NOT NECESSARILY SHOWN ON THE DRAWINGS. BEFORE WORKING ON THE DRAWINGS, THE ACCURACY OF THE POSITIONS OF SUCH UTILITIES AND STRUCTURES IS NOT GUARANTEED. BEFORE STARTING WORK, THE CONTRACTOR SHALL VERIFY THE EXISTENCE OF THE EXACT LOCATION OF ALL SUCH UTILITIES AND STRUCTURES AND ASSUME ALL LIABILITY FOR DAMAGE TO THEM.
- ALL DRAWINGS REMAIN THE PROPERTY OF THE ENGINEER AND SHALL NOT BE REPRODUCED, REVISED OR REVERSED WITHOUT THE WRITTEN CONSENT OF S. LLEWELLYN & ASSOCIATES LIMITED.
- OPERATION OF EXISTING WATERMAIN VALVES SHALL BE BY THE COUNTY OF BRANT STAFF ONLY.

DESIGN	CD/SJL	CHK'D	SL	DATE
DRAWN	CD/BKC	CHK'D		AUGUST, 2020



APPROVALS

10 m

S. LLEWELLYN & ASSOCIATES LIMITED  
 CONSULTING ENGINEERS  
 3228 South Service Road, Suite #106 East Wing, Burlington, Ont., L7N 3K8  
 Tel: (905) 631-8938  
 Fax: (905) 631-8927  
 email: info@sls.on.ca

PARIS,  
 COUNTY OF BRANT

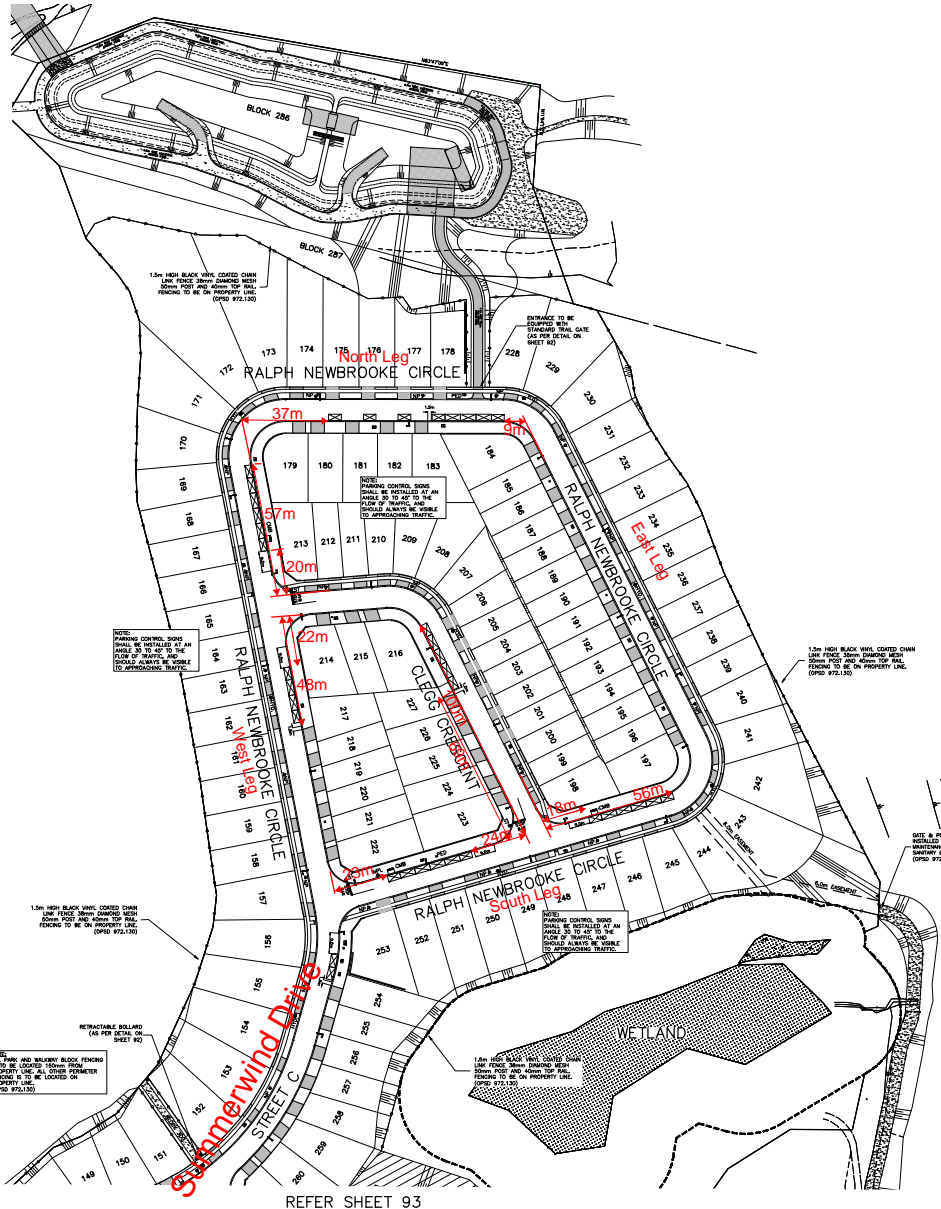
PROJECT NAME

LOSANI HOMES (PARIS) LIMITED  
 NITH PENINSULA  
 DRAFT PLAN No.: PS-1-10 & PS-2-10

TITLE

PARKING & FENCING PLAN  
 (SHEET 2 OF 3)

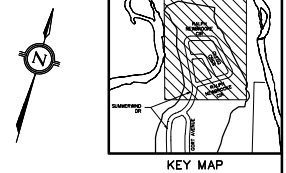
PROJECT No.	DRAWING No.	SHEET No.
16002	P-2	93



- LEGEND:**
- ☐ PARKING STALL
  - EXISTING/PROPOSED HYDRANT
  - EXISTING HYDRO POLE
  - EXISTING/PROPOSED LIGHT STANDARD
  - EXISTING/PROPOSED TRANSFORMER
  - PROPOSED 3 MODULE COMMUNITY MAILBOX
  - PROPOSED UTILITY PEDESTAL
  - PROPOSED RETAINING WALL
  - ASPHALT DRIVEWAY
  - PROPOSED STOP SIGN (30cm x 60cm) M.U.T.C.D. R=1 PROPOSED
  - PROPOSED NO PARKING LEFT/RIGHT (30cm x 30cm) M.U.T.C.D. R=51
  - PROPOSED NO PARKING RIGHT (30cm x 30cm) M.U.T.C.D. R=51
  - PROPOSED NO PARKING LEFT (30cm x 30cm) M.U.T.C.D. R=51
  - PROPOSED NO PARKING RIGHT (30cm x 30cm) M.U.T.C.D. R=51
  - TEMPORARY DEAD END BARRICADE (OPS 912/230) O/A CHECKERED BOARD SIGN (WA-8)
  - 600mm WIDE STOP BAR AND 10cm CENTERLINE PAVEMENT MARKING
  - ▨ LIMITS OF SUBSEQUENT PHASES

NO. OF DETACHED UNITS = 280  
 NO. OF TOWNHOUSE UNITS = 62  
 TOTAL NO. OF UNITS = 351  
 NO. OF PARKING SPACES PROVIDED = 135

- NOTES:**
- PARKING STALLS ARE 2.8m WIDE BY 5.5m LONG.
  - PARKING AREAS WHERE SHOWN AS PARALLEL PARKING ARE 2.8m WIDE BY 6.7m LONG.
  - ALL PARKING STALLS SHALL BE A MINIMUM OF 1.0m FROM DRIVEWAY OR CURB CUTS.
  - A MINIMUM OF 8m FROM AN INTERSECTION (10m WHERE THERE ARE TRAFFIC SIGNALS), AS MEASURED FROM THE POINT OF INTERSECTION FORMED BY THE PROJECTIONS OF THE CURB LINES OR EDGES OF PAVEMENT WHERE THERE IS NO CURB.
  - PARKING SPACES ARE NOT PERMITTED:
    - a. ACROSS FROM A 'T' INTERSECTION;
    - b. WITHIN 5m OF A BUS STOP;
    - c. WITHIN 3m OF A FIRE HYDRANT;
    - d. ALONG SCHOOL FRONTS;
    - e. IN FRONT OF A MIDDLE SCHOOL PEDESTRIAN WALKWAY OR TRAIL WHICH CONTINUES ON THE OPPOSITE SIDE OF THE STREET;



NO.	DATE	BY	REVISIONS
8.	NOV/23	CD	UPDATED HYDRO ON COMPOSITE UTILITY PLAN
7.	OCT/23	CD	COMPOSITE UTILITY PLAN
6.	AUG/23	CD	AS PER COUNTY COMMENTS
5.	SEPT/22	CD	AS PER COUNTY COMMENTS
4.	JUN/22	CD	AS PER COUNTY SANITARY & FENCING COMMENTS
3.	MAY/22	CD	AS PER COUNTY COMMENTS

**NOTES TO CONTRACTOR:**

- CONTRACTOR AND SUBCONTRACTORS SHALL NOT SCALE FROM THIS DRAWING.
- ANY INCONSISTENCIES AND OMISSIONS FOUND ON THE DRAWINGS MUST BE REPORTED TO THE ENGINEER FOR CLARIFICATION BEFORE COMMENCING THE WORK.
- BEFORE THE START OF CONSTRUCTION, THE CONTRACTOR MUST OBTAIN AND VERIFY ALL UNDERGROUND AND EXISTING UTILITIES AND REPORT ALL FINDINGS TO THE ENGINEER. ONCE CONSTRUCTION HAS COMMENCED, THE CONTRACTOR ACCEPTS RESPONSIBILITY FOR ALL UNDERGROUND, ELEVATIONS, AND SITE CONDITIONS.
- THE LOCATION OF POLE LINES, CABLES, WATERMANS, CEMENTS, AND OTHER UNDERGROUND AND OVERHEAD UTILITIES AND STRUCTURES ARE NOT NECESSARILY SHOWN ON THE DRAWINGS. MARKINGS SHOWN ON THE DRAWINGS, THE ACCURACY OF THE POSITIONS OF SUCH UTILITIES AND STRUCTURES IS NOT GUARANTEED. BEFORE STARTING WORK, THE CONTRACTOR SHALL VERIFY THE EXISTENCE OF THE EXACT LOCATION OF ALL SUCH UTILITIES AND STRUCTURES AND ASSUME ALL LIABILITY FOR DAMAGE TO THEM.
- ALL DRAWINGS REMAIN THE PROPERTY OF THE ENGINEER AND SHALL NOT BE REPRODUCED, REVISED, OR REUSED WITHOUT THE WRITTEN CONSENT OF S. LLEWELLYN & ASSOCIATES LIMITED.
- OPERATION OF EXISTING WATERMAIN VALVES SHALL BE BY THE COUNTY OF BRANT STAFF ONLY.

DESIGN	CD/SL	CHK'D	SL	DATE
DRAWN	CD/BEK	CHK'D		AUGUST, 2020



**APPROVALS**

10 m

**S. LLEWELLYN & ASSOCIATES LIMITED**  
 CONSULTING ENGINEERS  
 3228 South Service Road, Suite #106 East Wing, Burlington, Ont., L7N 3A8  
 Tel: (905) 631-6978  
 Fax: (905) 631-8827  
 email: info@slae.on.ca

**PARIS, COUNTY OF BRANT**

PROJECT NAME  
**LOSANI HOMES (PARIS) LIMITED  
 NITH PENINSULA**

DRAFT PLAN No.: PS-1-10 & PS-2-10

TITLE  
**PARKING & FENCING PLAN  
 (SHEET 3 OF 3)**

PROJECT No. 16002    DRAWING No. P-3    SHEET No. 94

