

Legend

— Site Plan (Cahoon 2022)

Biophysical Feature Boundaries

— Unnamed Tributary Top of Bank (Cahoon 2022)

— Woodland Dripline (Cahoon 2022)

Biophysical Feature Setbacks

— Unnamed Tributary Top of Bank + 15 m

— Woodland Dripline + 10 m

Recomended Mitigation Measures

— Silt Fence (Cahoon 2022)

— Paigewire Fence

— Temporary Ditch

— SWM Facility

— Biodegradable Coir Cloth Erosion Control Blanket

Proposed Plantings

— Trees

— Shrubs

— Seeded Area

GENERAL NOTES:
-Verify all drawing dimensions.
-Numeric scale is for a 24x36 inch print. Do not scale.
-Contractor to report any discrepancies, errors, or omissions to the project Arborist before proceeding.

TERRASTORY
environmental consulting inc.
www.terrastoryenv.com info@terrastoryenviro.com 905.745.5398
Specialists in Natural Heritage, Tree Protection, and Environmental Policy

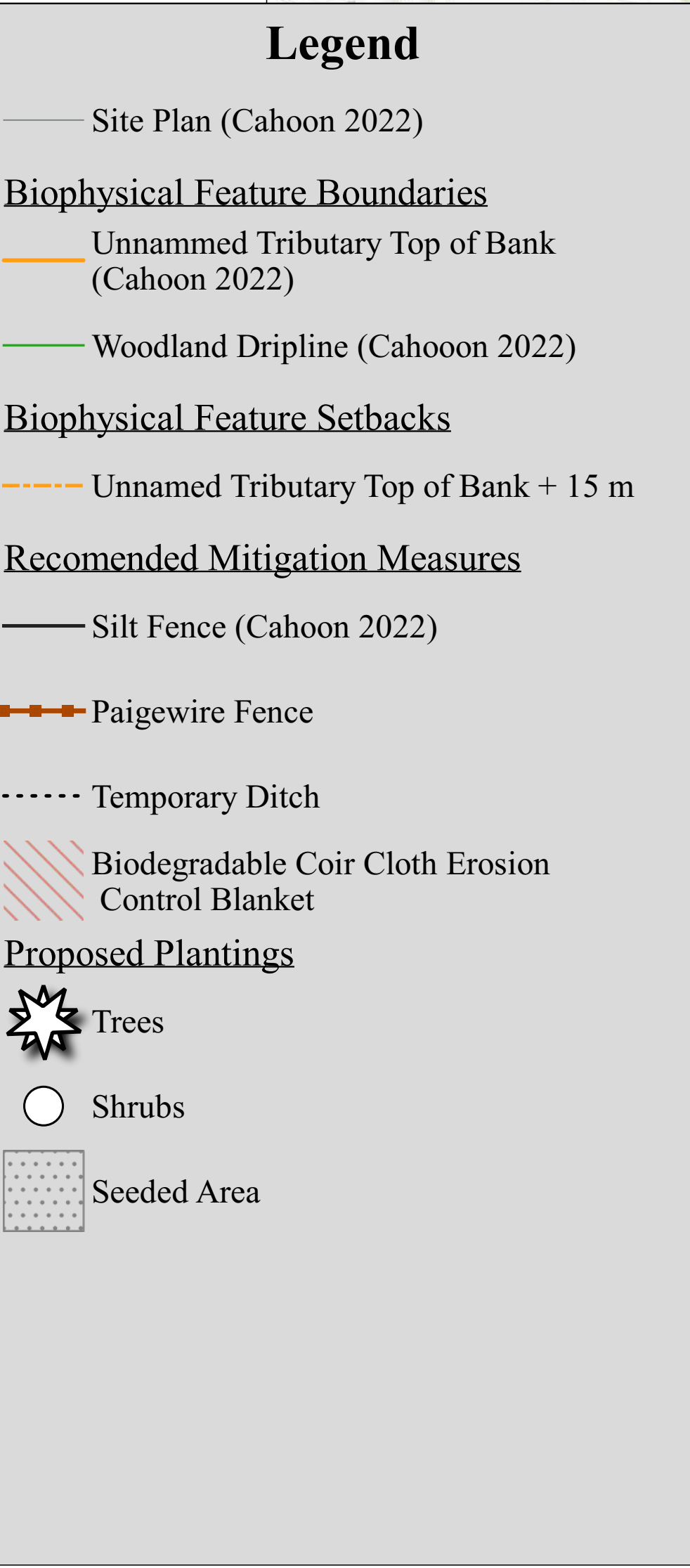
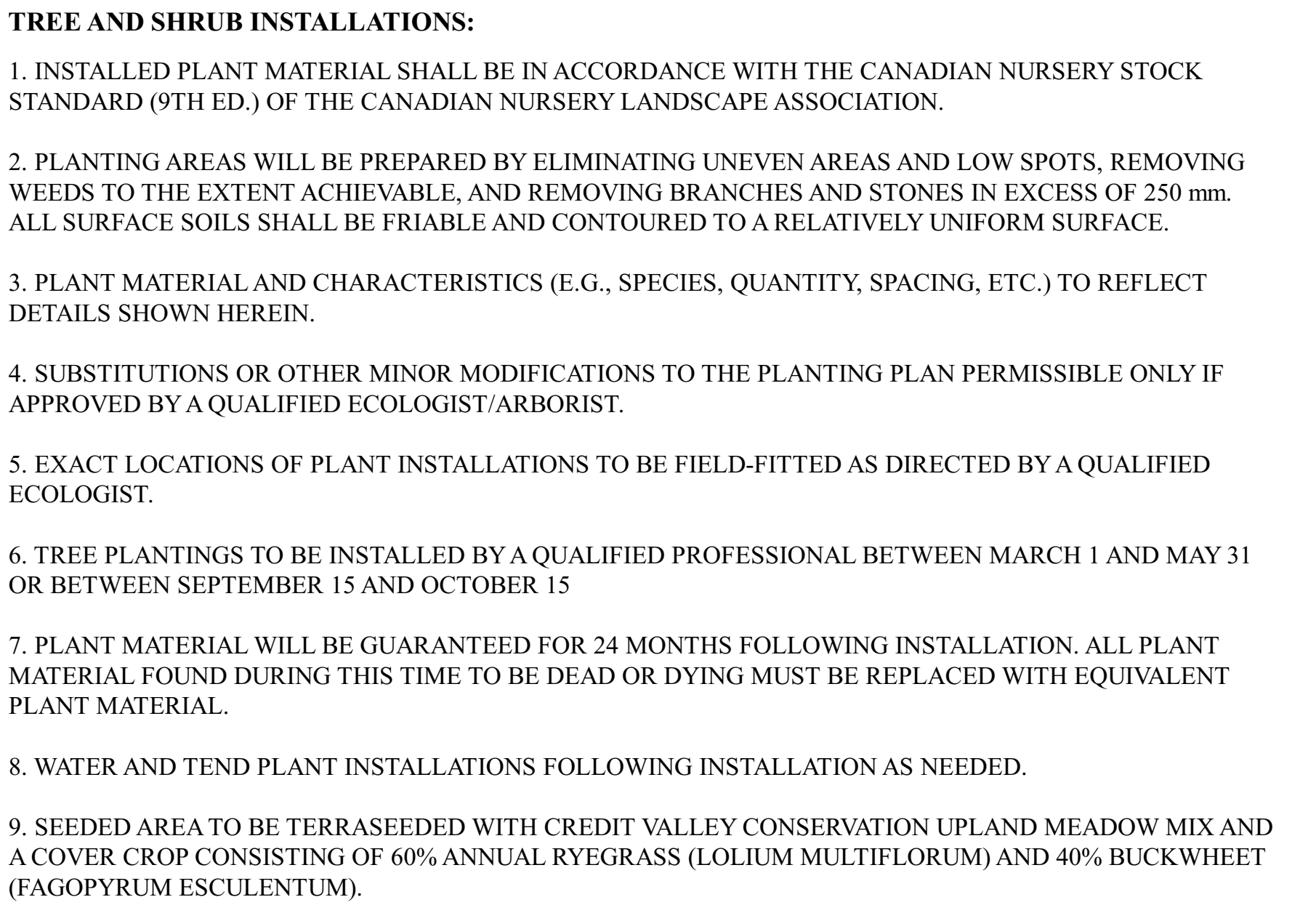
N

0 10 20 30 40 m

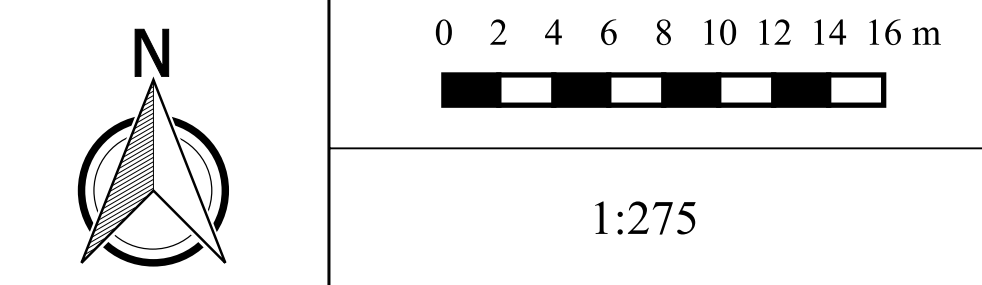
1:800

Location:
84 Old Onondaga Road East,
County of Brant

Project No.: 2148	Appendix 8: Ecological Management Plan
Date: 2022-02-18	
By: RA Checked: AB	
Orthophotograph Date: N/A	



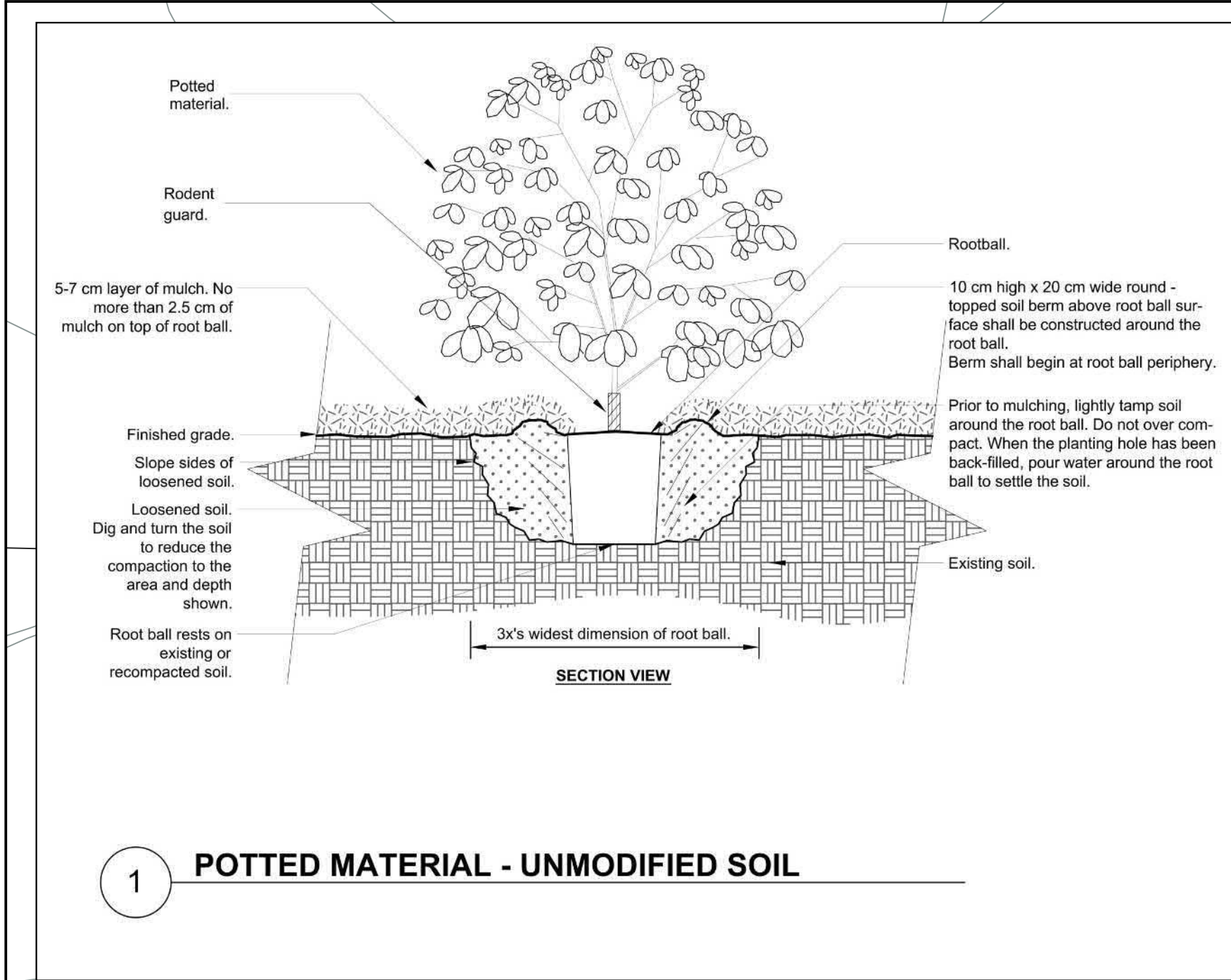
GENERAL NOTES:
 -Verify all drawing dimensions.
 -Numeric scale is for a 24x36 inch print. Do not scale.
 -Contractor to report any discrepancies, errors, or omissions to the project Arborist before proceeding.



Location:
84 Old Onondaga Road East,
County of Brant

Project No.: 2148		Appendix 8-1: <h1 style="text-align: center;">Ecological Management Plan</h1>
Date: 2022-02-18		
By: RA	Checked: AB	
Orthophotograph Date:		
N/A		

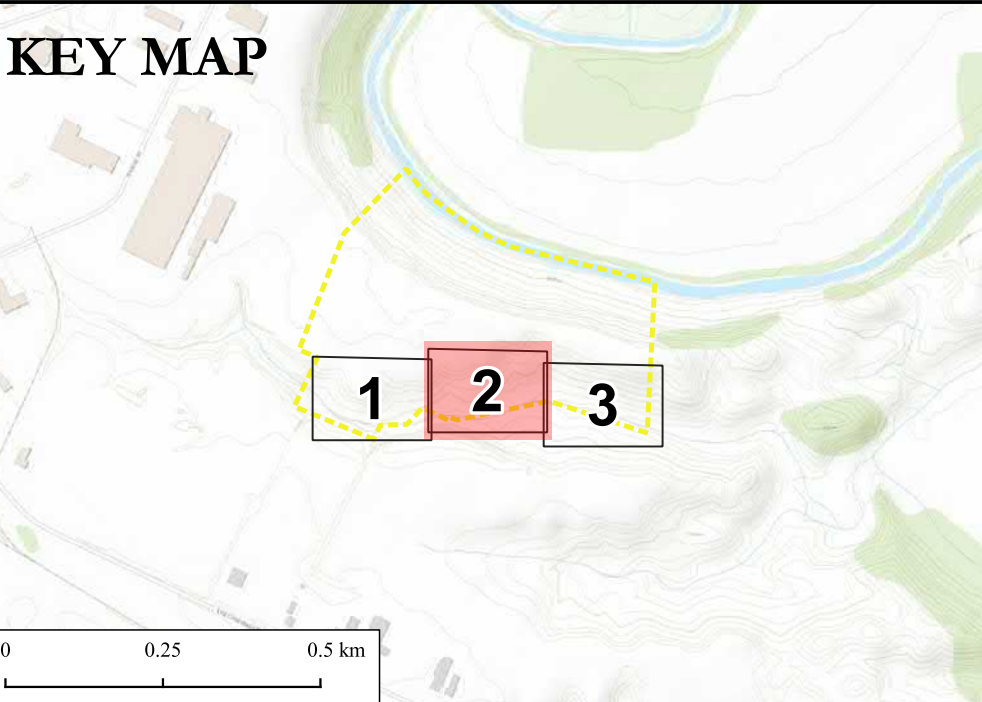
Quantity	Common Name	Scientific Name	Species Code	Size	Condition	Spacing (m on Centre)
8	Balsam Poplar	<i>Populus balsamifera</i>	Pb	5 gallon pot (min)	Container	6
37	Carolina Rose	<i>Rosa carolina</i>	Rc	5 gallon pot (min)	Container	2
36	Gray Dogwood	<i>Cornus Racemosa</i>	Cr	5 gallon pot (min)	Container	2
36	Purple Flowering Raspberry	<i>Rubus odoratus</i>	Ro	5 gallon pot (min)	Container	2
8	Red Cedar	<i>Juniperus virginiana</i>	Jv	5 gallon pot (min)	Container	6
8	Red Oak	<i>Quercus rubra</i>	Qr	5 gallon pot (min)	Container	6
31	Staghorn Sumac	<i>Rhus typhina</i>	Rt	5 gallon pot (min)	Container	2
8	Trembling Aspen	<i>Populus tremuloides</i>	Pt	5 gallon pot (min)	Container	6
36	Wild Plum	<i>Prunus americana</i>	Pa	5 gallon pot (min)	Container	2
208	Total					



TREE AND SHRUB INSTALLATIONS:

1. INSTALLED PLANT MATERIAL SHALL BE IN ACCORDANCE WITH THE CANADIAN NURSERY STOCK STANDARD (9TH ED.) OF THE CANADIAN NURSERY LANDSCAPE ASSOCIATION.
2. PLANTING AREAS WILL BE PREPARED BY ELIMINATING UNEVEN AREAS AND LOW SPOTS, REMOVING WEEDS TO THE EXTENT ACHIEVABLE, AND REMOVING BRANCHES AND STONES IN EXCESS OF 250 mm. ALL SURFACE SOILS SHALL BE FRIABLE AND CONTOURED TO A RELATIVELY UNIFORM SURFACE.
3. PLANT MATERIAL AND CHARACTERISTICS (E.G., SPECIES, QUANTITY, SPACING, ETC.) TO REFLECT DETAILS SHOWN HEREIN.
4. SUBSTITUTIONS OR OTHER MINOR MODIFICATIONS TO THE PLANTING PLAN PERMISSIBLE ONLY IF APPROVED BY A QUALIFIED ECOLOGIST/ARBORIST.
5. EXACT LOCATIONS OF PLANT INSTALLATIONS TO BE FIELD-FITTED AS DIRECTED BY A QUALIFIED ECOLOGIST.
6. TREE PLANTINGS TO BE INSTALLED BY A QUALIFIED PROFESSIONAL BETWEEN MARCH 1 AND MAY 31 OR BETWEEN SEPTEMBER 15 AND OCTOBER 15
7. PLANT MATERIAL WILL BE GUARANTEED FOR 24 MONTHS FOLLOWING INSTALLATION. ALL PLANT MATERIAL FOUND DURING THIS TIME TO BE DEAD OR DYING MUST BE REPLACED WITH EQUIVALENT PLANT MATERIAL.
8. WATER AND TEND PLANT INSTALLATIONS FOLLOWING INSTALLATION AS NEEDED.
9. SEEDED AREA TO BE TERRASEEDED WITH CREDIT VALLEY CONSERVATION UPLAND MEADOW MIX AND A COVER CROP CONSISTING OF 60% ANNUAL RYEGRASS (LOLIUM MULTIFLORUM) AND 40% BUCKWHEAT (FAGOPYRUM ESCULENTUM).

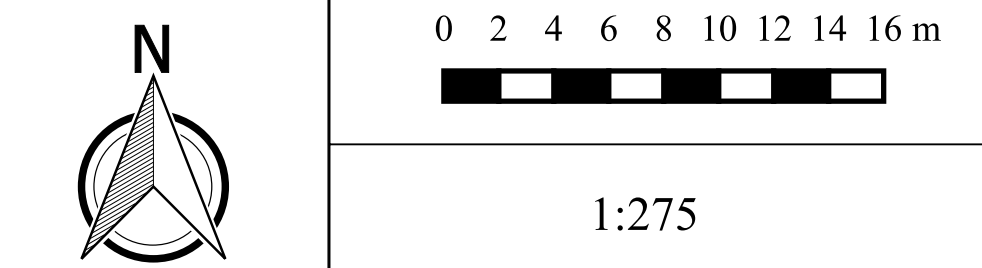
KEY MAP



Legend

- Site Plan (Cahoon 2022)
- Biophysical Feature Boundaries**
 - Unnammed Tributary Top of Bank (Cahoon 2022)
 - Woodland Dripline (Cahoon 2022)
- Biophysical Feature Setbacks**
 - Unnammed Tributary Top of Bank + 15 m
- Recomended Mitigation Measures**
 - Silt Fence (Cahoon 2022)
 - Paigewire Fence
 - Temporary Ditch
 - SWM Facility
 - Biodegradable Coir Cloth Erosion Control Blanket
- Proposed Plantings**
 - Trees
 - Shrubs
 - Seeded Area

GENERAL NOTES:
-Verify all drawing dimensions.
-Numeric scale is for a 24x36 inch print. Do not scale.
-Contractor to report any discrepancies, errors, or omissions to the project Arborist before proceeding.

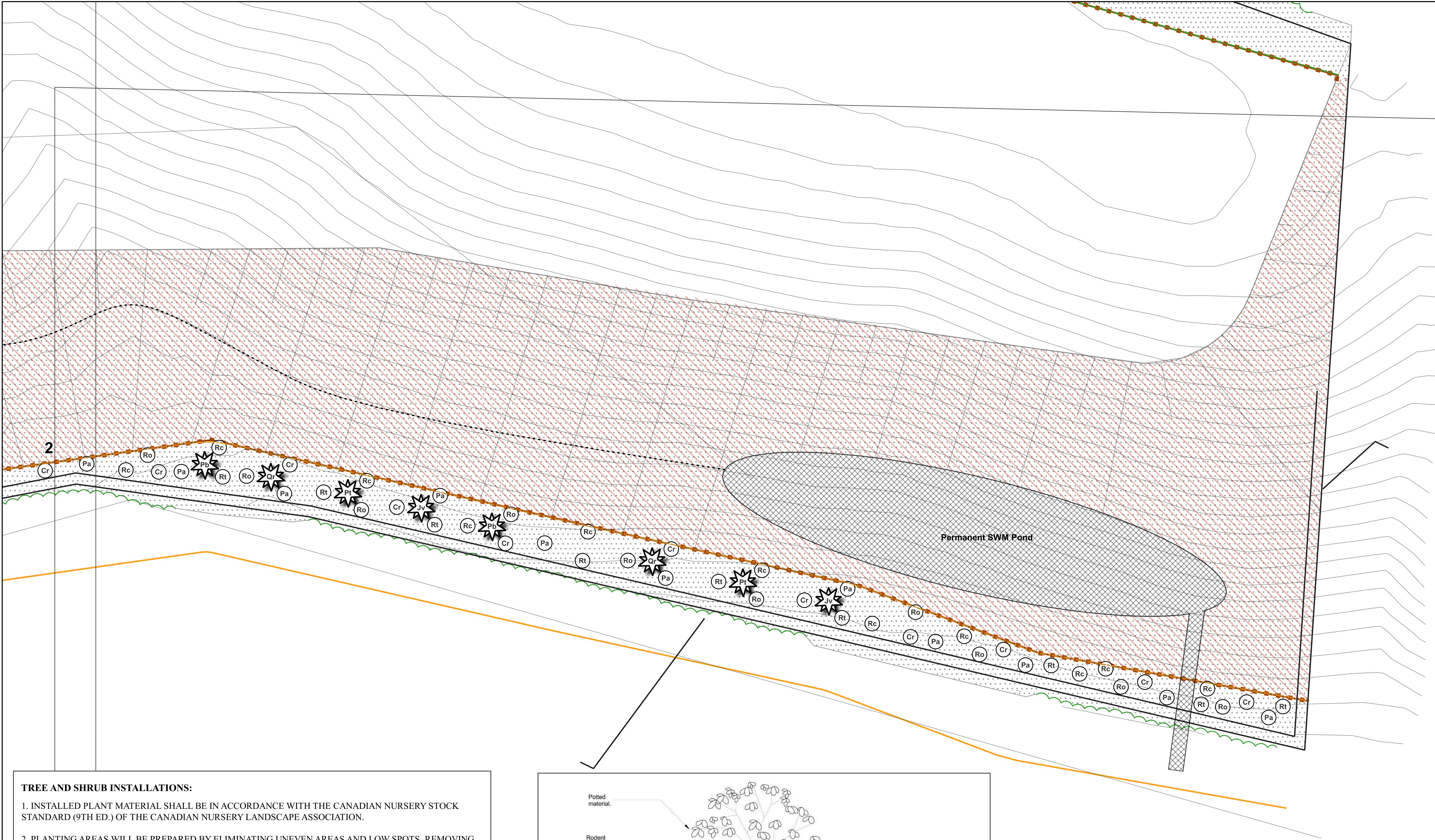


Location:
84 Old Onondaga Road East,
County of Brant

Project No.: 2148
Date: 2022-02-18
By: RA **Checked:** AB
Orthophotograph Date: N/A

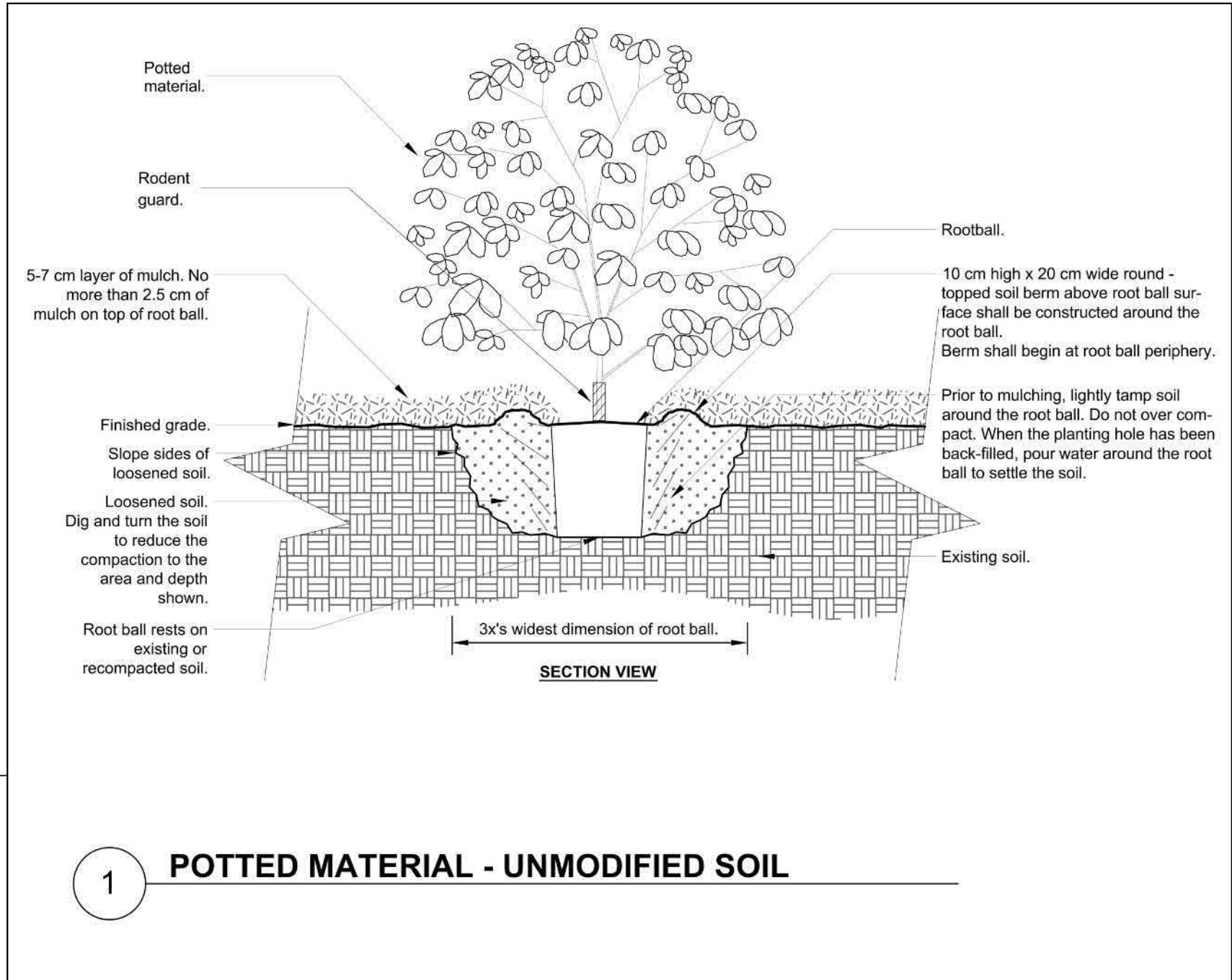
Appendix 8-2:
Ecological Management Plan

Quantity	Common Name	Scientific Name	Species Code	Size	Condition	Spacing (m on Centre)
8	Balsam Poplar	Populus balsamifera	Pb	5 gallon pot (min)	Container	6
37	Carolina Rose	Rosa carolina	Rc	5 gallon pot (min)	Container	2
36	Gray Dogwood	Cornus Racemosa	Cr	5 gallon pot (min)	Container	2
36	Purple Flowering Raspberry	Rubus odoratus	Ro	5 gallon pot (min)	Container	2
8	Red Cedar	Juniperus virginiana	Jv	5 gallon pot (min)	Container	6
8	Red Oak	Quercus rubra	Qr	5 gallon pot (min)	Container	6
31	Staghorn Sumac	Rhus typhina	Rt	5 gallon pot (min)	Container	2
8	Trembling Aspen	Populus tremuloides	Pt	5 gallon pot (min)	Container	6
36	Wild Plum	Prunus americana	Pa	5 gallon pot (min)	Container	2
208	Total					



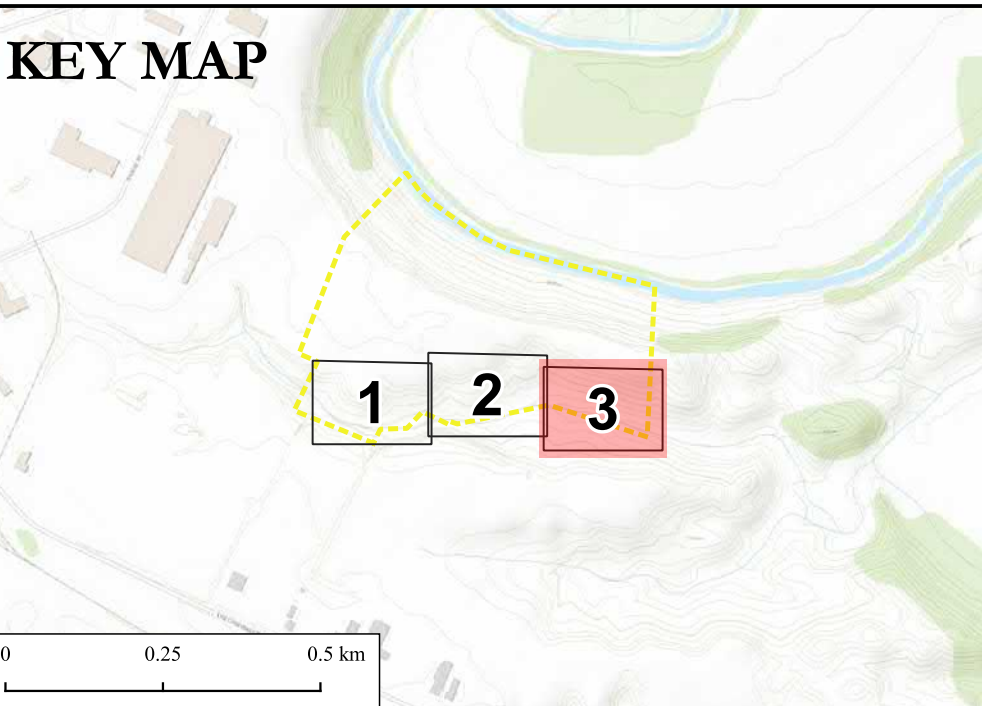
TREE AND SHRUB INSTALLATIONS:

1. INSTALLED PLANT MATERIAL SHALL BE IN ACCORDANCE WITH THE CANADIAN NURSERY STOCK STANDARD (9TH ED.) OF THE CANADIAN NURSERY LANDSCAPE ASSOCIATION.
2. PLANTING AREAS WILL BE PREPARED BY ELIMINATING UNEVEN AREAS AND LOW SPOTS, REMOVING WEEDS TO THE EXTENT ACHIEVABLE, AND REMOVING BRANCHES AND STONES IN EXCESS OF 250 mm. ALL SURFACE SOILS SHALL BE FRIABLE AND CONTOURED TO A RELATIVELY UNIFORM SURFACE.
3. PLANT MATERIAL AND CHARACTERISTICS (E.G., SPECIES, QUANTITY, SPACING, ETC.) TO REFLECT DETAILS SHOWN HEREIN.
4. SUBSTITUTIONS OR OTHER MINOR MODIFICATIONS TO THE PLANTING PLAN PERMISSIBLE ONLY IF APPROVED BY A QUALIFIED ECOLOGIST/ARBORIST.
5. EXACT LOCATIONS OF PLANT INSTALLATIONS TO BE FIELD-FITTED AS DIRECTED BY A QUALIFIED ECOLOGIST.
6. TREE PLANTINGS TO BE INSTALLED BY A QUALIFIED PROFESSIONAL BETWEEN MARCH 1 AND MAY 31 OR BETWEEN SEPTEMBER 15 AND OCTOBER 15
7. PLANT MATERIAL WILL BE GUARANTEED FOR 24 MONTHS FOLLOWING INSTALLATION. ALL PLANT MATERIAL FOUND DURING THIS TIME TO BE DEAD OR DYING MUST BE REPLACED WITH EQUIVALENT PLANT MATERIAL.
8. WATER AND TEND PLANT INSTALLATIONS FOLLOWING INSTALLATION AS NEEDED.
9. SEEDED AREA TO BE TERRASEEDED WITH CREDIT VALLEY CONSERVATION UPLAND MEADOW MIX AND A COVER CROP CONSISTING OF 60% ANNUAL RYEGRASS (LOLIUM MULTIFLORUM) AND 40% BUCKWHEAT (FAGOPYRUM ESCULENTUM).



Quantity	Common Name	Scientific Name	Species Code	Size	Condition	Spacing (m on Centre)
8	Balsam Poplar	Populus balsamifera	Pb	5 gallon pot (min)	Container	6
37	Carolina Rose	Rosa carolina	Rc	5 gallon pot (min)	Container	2
36	Gray Dogwood	Cornus Racemosa	Cr	5 gallon pot (min)	Container	2
36	Purple Flowering Raspberry	Rubus odoratus	Ro	5 gallon pot (min)	Container	2
8	Red Cedar	Juniperus virginiana	Jv	5 gallon pot (min)	Container	6
8	Red Oak	Quercus rubra	Qr	5 gallon pot (min)	Container	6
31	Staghorn Sumac	Rhus typhina	Rt	5 gallon pot (min)	Container	2
8	Trembling Aspen	Populus tremuloides	Pt	5 gallon pot (min)	Container	6
36	Wild Plum	Prunus americana	Pa	5 gallon pot (min)	Container	2
208	Total					

KEY MAP



Legend

- Site Plan (Cahoon 2022)
- Biophysical Feature Boundaries**
 - Unnammed Tributary Top of Bank (Cahoon 2022)
 - Woodland Dripline (Cahoon 2022)
- Biophysical Feature Setbacks**
 - Unnamed Tributary Top of Bank + 15 m
- Recomended Mitigation Measures**
 - Silt Fence (Cahoon 2022)
 - Paigewire Fence
 - Temporary Ditch
 - SWM Facility
 - Biodegradable Coir Cloth Erosion Control Blanket
- Proposed Plantings**
 - Trees
 - Shrubs
 - Seeded Area

GENERAL NOTES:
-Verify all drawing dimensions.
-Numeric scale is for a 24x36 inch print. Do not scale.
-Contractor to report any discrepancies, errors, or omissions to the project Arborist before proceeding.

TERRASTORY
environmental consulting inc.
www.terrastoryenv.com info@terrastoryenviro.com 905.745.5398
Specialists in Natural Heritage, Tree Protection, and Environmental Policy



Location:
84 Old Onondaga Road East,
County of Brant

Project No.: 2148
Date: 2022-02-18
By: RA **Checked:** AB
Orthophotograph Date: N/A

Appendix 8-3:
Ecological Management Plan