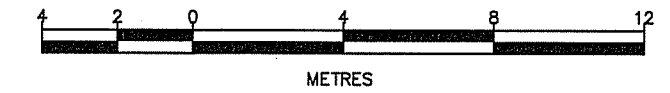


PART 1 - PLAN OF SURVEY OF
 LOT 34 AND PART OF LOT 33
 EAST OF WILLOW STREET
 (FORMERLY TOWN OF PARIS)
 COUNTY OF BRANT

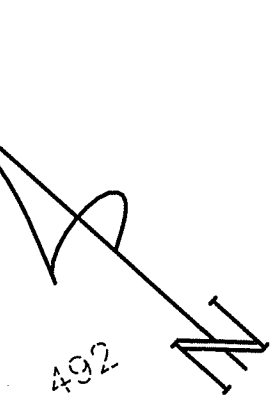
SCALE 1:200



MacAULAY, WHITE & MUIR LTD.

© COPYRIGHT 2021

METRIC
 DISTANCES SHOWN ON THIS PLAN ARE IN METRES AND
 CAN BE CONVERTED TO FEET BY DIVIDING BY 0.3048.



NOTES:

- PART 2 - WRITTEN REPORT**
- 1) A METAL SHED ON THE SUBJECT PROPERTY EXTENDS ONTO THE LANDS TO THE NORTHEAST.
 - 2) A METAL SHED ON THE LANDS TO THE NORTHWEST EXTENDS ONTO THE SUBJECT PROPERTY.
 - 3) AN OVERHEAD UTILITY WIRE CROSSES THE SUBJECT PROPERTY TO SERVICE AN ADJOINING PROPERTY.
 - 4) THE FENCES ARE NOT ON THE PROPERTY LINES. WHERE SOMEONE OCCUPIES A PIECE OF LAND FOR MORE THAN 7 YEARS THERE IS A POSSIBILITY OF ADVERSE POSSESSION.

THIS PLAN HAS BEEN PREPARED FOR SIERRA CONTRACTING AND THE UNDERSIGNED ACCEPTS NO RESPONSIBILITY FOR USE BY ANY OTHERS.

LEGEND

- SIB - STANDARD IRON BAR
- SSIB - SHORT STANDARD IRON BAR
- IB - IRON BAR
- CC - CUT CROSS
- CP - CONCRETE PIN
- - FOUND
- - PLANTED
- ∅ - ROUND
- WIT - WITNESS
- S - SET
- P1 - REGISTERED PLAN 492
- P2 - PLAN BY BOWMAN, BLACK & SHOEMAKER (FILE: 299-63)
- (P) - PROPORTIONED
- D1 - PIN 32050-0122 (INST. A26145)
- UP - UTILITY POLE
- U- - OVERHEAD UTILITY LINE

SURVEYOR'S CERTIFICATE

I CERTIFY THAT:

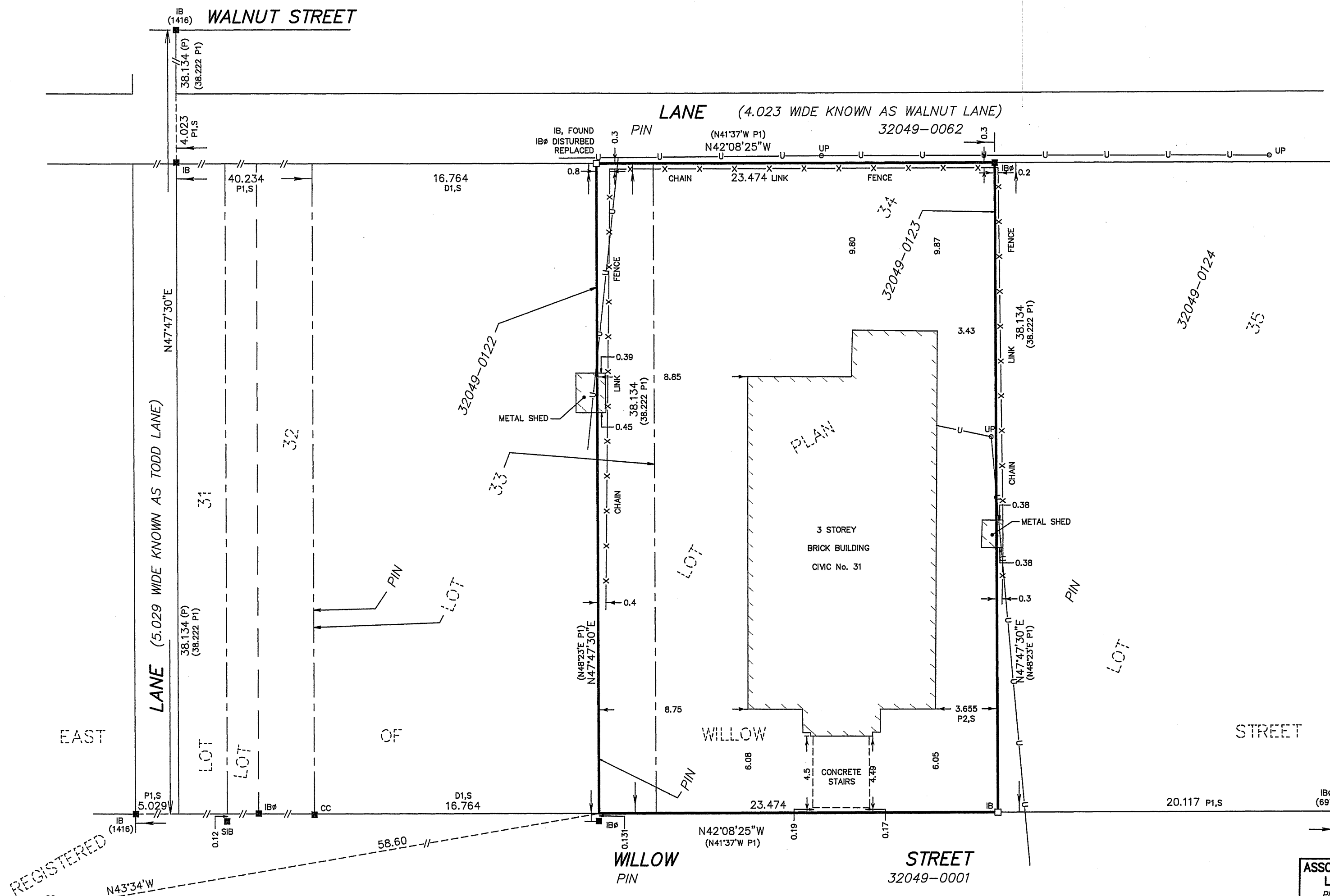
1. THIS SURVEY AND PLAN ARE CORRECT AND IN ACCORDANCE WITH THE SURVEYS ACT AND THE SURVEYORS ACT AND THE REGULATIONS MADE UNDER THEM.
2. THE SURVEY WAS COMPLETED ON THE 28TH DAY OF FEBRUARY, 2021.

MARCH 2, 2021

John W. Muir
 JOHN W. MUIR
 ONTARIO LAND SURVEYOR

MacAULAY, WHITE & MUIR LTD.
 ONTARIO LAND SURVEYORS-CANADA LANDS SURVEYORS
 440 HARDY ROAD, UNIT 2, BRANTFORD, ONTARIO, N3T 5L8
 TEL. 519-752-0040 FAX. 519-752-0087 mwmsurvey@bellnet.ca

21-044



NOTE:
 BEARINGS ARE GRID, DERIVED FROM OBSERVED REFERENCE POINTS A AND B BY REAL TIME NETWORK OBSERVATION, UTM ZONE 17, NAD83 (CSRS) (2010). DISTANCES ARE GROUND AND CAN BE CONVERTED TO GRID BY MULTIPLYING BY THE COMBINED SCALE FACTOR OF 0.999602. ALL DIMENSIONS ARE MEASURED UNLESS QUALIFIED. ALL FENCES ARE "ON LINE" UNLESS TIES TO THE PROPERTY LINE ARE SHOWN.

OBSERVED REFERENCE POINTS (ORP): UTM ZONE 17, NAD83 (CSRS) (2010)
 CO-ORDINATES TO URBAN ACCURACY PER SEC. 14(2) OF O. REG 216/10.

POINT ID	NORTHING	EASTING
A	4782310.02	550728.91
B	4782387.55	550658.40

CO-ORDINATES CANNOT, IN THEMSELVES, BE USED TO RE-ESTABLISH CORNERS OR BOUNDARIES SHOWN ON THIS PLAN.

ASSOCIATION OF ONTARIO
 LAND SURVEYORS
 PLAN SUBMISSION FORM
 2119747

THIS PLAN IS NOT VALID UNLESS IT IS AN EMBOSSED ORIGINAL COPY ISSUED BY THE SURVEYOR IN ACCORDANCE WITH REGULATION 1026, SECTION 29(3).

REGISTERED
 ©