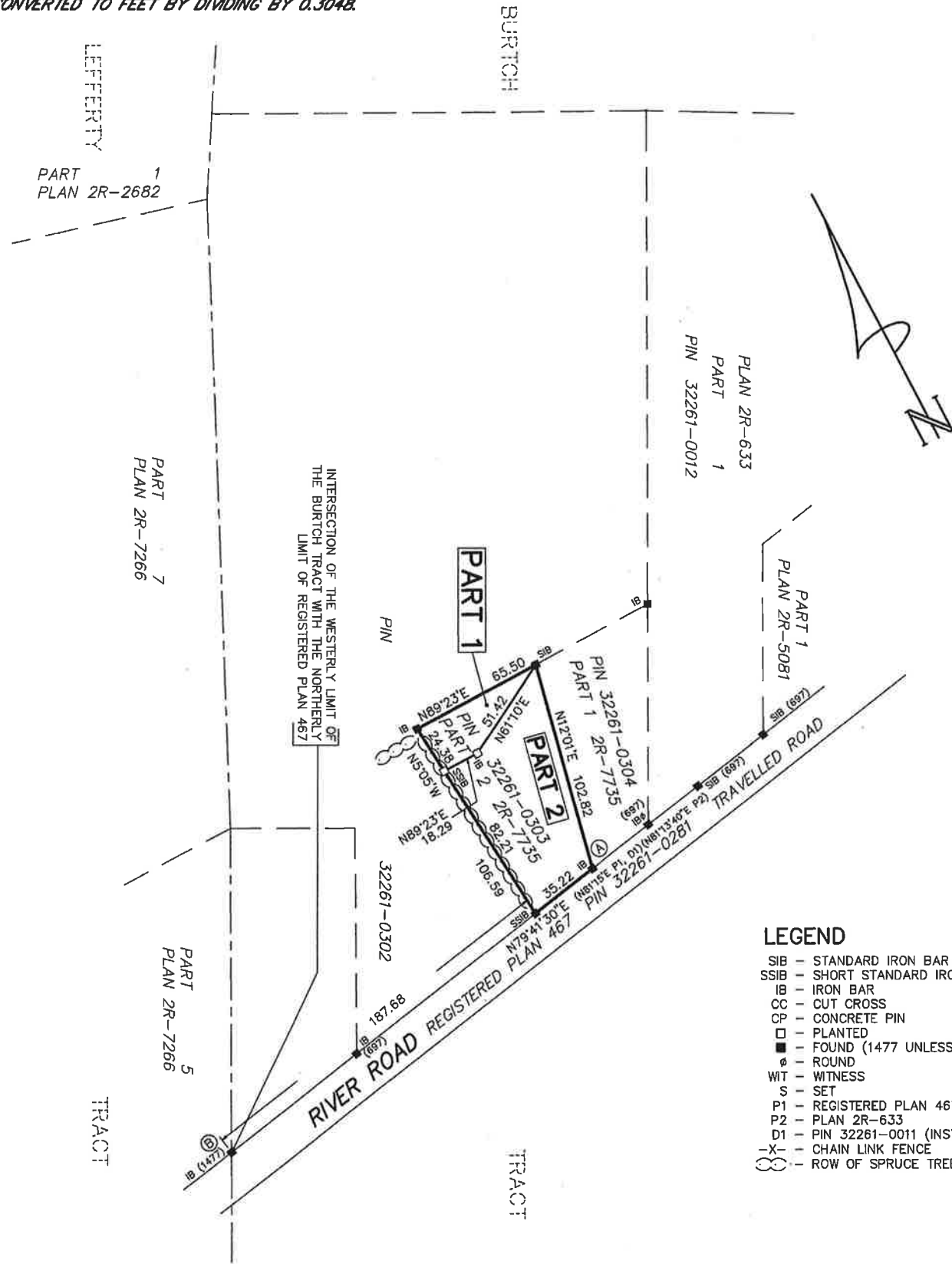


METRIC  
DISTANCES AND CO-ORDINATES SHOWN ON  
THIS PLAN ARE IN METRES AND CAN BE  
CONVERTED TO FEET BY DIVIDING BY 0.3048.



I REQUIRE THIS PLAN TO BE  
DEPOSITED UNDER THE LAND  
TITLES ACT.

DATE JANUARY 27, 2022

*J. Muir*  
J. MUIR

PLAN 2R--  
RECEIVED AND DEPOSITED.

DATE

REPRESENTATIVE FOR  
LAND REGISTRAR FOR THE LAND  
TITLES DIVISION OF BRANT (No. 2).

SCHEDULE

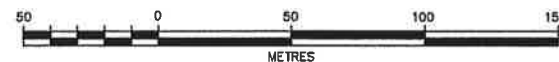
PART	LOT	CONCESSION/PLAN	PIN	AREA IN SQUARE METRES
1		BURTCH TRACT	32261-0303	1018
2				4137

PARTS 1 AND 2 COMPRISE ALL OF PIN 32261-0303.

PLAN OF SURVEY OF  
PART OF THE BURTCH TRACT  
(GEOGRAPHIC TOWNSHIP OF BRANTFORD)

COUNTY OF BRANT

SCALE 1:2000



MacAULAY, WHITE & MUIR LTD.

NOTE:

BEARINGS ARE GRID, DERIVED FROM OBSERVED REFERENCE POINTS A AND B BY  
REAL TIME NETWORK OBSERVATION, UTM ZONE 17, NAD83 (CSRS) (1997.0)  
DISTANCES ARE GROUND AND CAN BE CONVERTED TO GRID BY MULTIPLYING  
BY THE COMBINED SCALE FACTOR OF 0.9996.  
ALL DIMENSIONS ARE MEASURED UNLESS QUALIFIED.  
ALL FENCES ARE "ON LINE" UNLESS TIES TO THE PROPERTY LINE ARE SHOWN.

OBSERVED REFERENCE POINTS (ORP): UTM ZONE 17, NAD83 (CSRS) (1997.0)  
CO-ORDINATES TO RURAL ACCURACY PER SEC. 14(2) OF O. REG 216/10.

POINT ID	NORTHING	EASTING
A	4771058.7	561218.2
B	4771018.8	560998.9

CO-ORDINATES CANNOT, IN THEMSELVES, BE USED TO RE-ESTABLISH  
CORNERS OR BOUNDARIES SHOWN ON THIS PLAN.

SURVEYOR'S CERTIFICATE

I CERTIFY THAT:

- THIS SURVEY AND PLAN ARE CORRECT AND IN ACCORDANCE WITH  
THE SURVEYS ACT, THE SURVEYORS ACT AND THE LAND TITLES ACT  
AND THE REGULATIONS MADE UNDER THEM.
- THE SURVEY WAS COMPLETED ON THE 26th DAY OF JANUARY, 2022.

JANUARY 27, 2022

*John Muir*  
JOHN MUIR  
ONTARIO LAND SURVEYOR

MacAULAY, WHITE & MUIR LTD.  
ONTARIO LAND SURVEYORS - CANADA LANDS SURVEYORS  
440 HARDY ROAD, UNIT 2, BRANTFORD, ONTARIO, N3T 5L8  
TEL 519-752-0040 FAX 519-752-0087 mwmurvey@bellnet.ca

21-225