

PLANT SCHEDULE				
TREES				
QTY.	BOTANICAL NAME	COMMON NAME	SIZE	COND.
DECIDUOUS TREES				
3	CARPINUS CAROLINIANA	BLUE BEECH	50mm cal.	W.B.
3	AMELANCHIER CANADENSIS	SERVICE BERRY	1 gallon	pot
3	QUERCUS MACROCARPA	BUR OAK	50mm cal.	W.B.
CONIFEROUS TREES				
3	PICEA GLAUCA	EASTERN WHITE SPRUCE	250cm	W.B.
3	JUNIPERUS VIRGINIANA	EASTERN RED CEDAR	250cm	W.B.
3	ABIES BALSAMEA	BALSAM FIR	250cm	W.B.
SHRUBS				
QTY.	BOTANICAL NAME	COMMON NAME	SIZE	COND.
SHRUBS				
10	MYRICA PENNSYLVANICA	BAYBERRY	1 gallon	pot
5	CORNUS SERICEA	RED OSIER DOGWOOD	1 gallon	pot
4	EUONYMUS ALATUS "COMPACTUS"	DWARF BURNING BUSH	50cm/3gal	pot

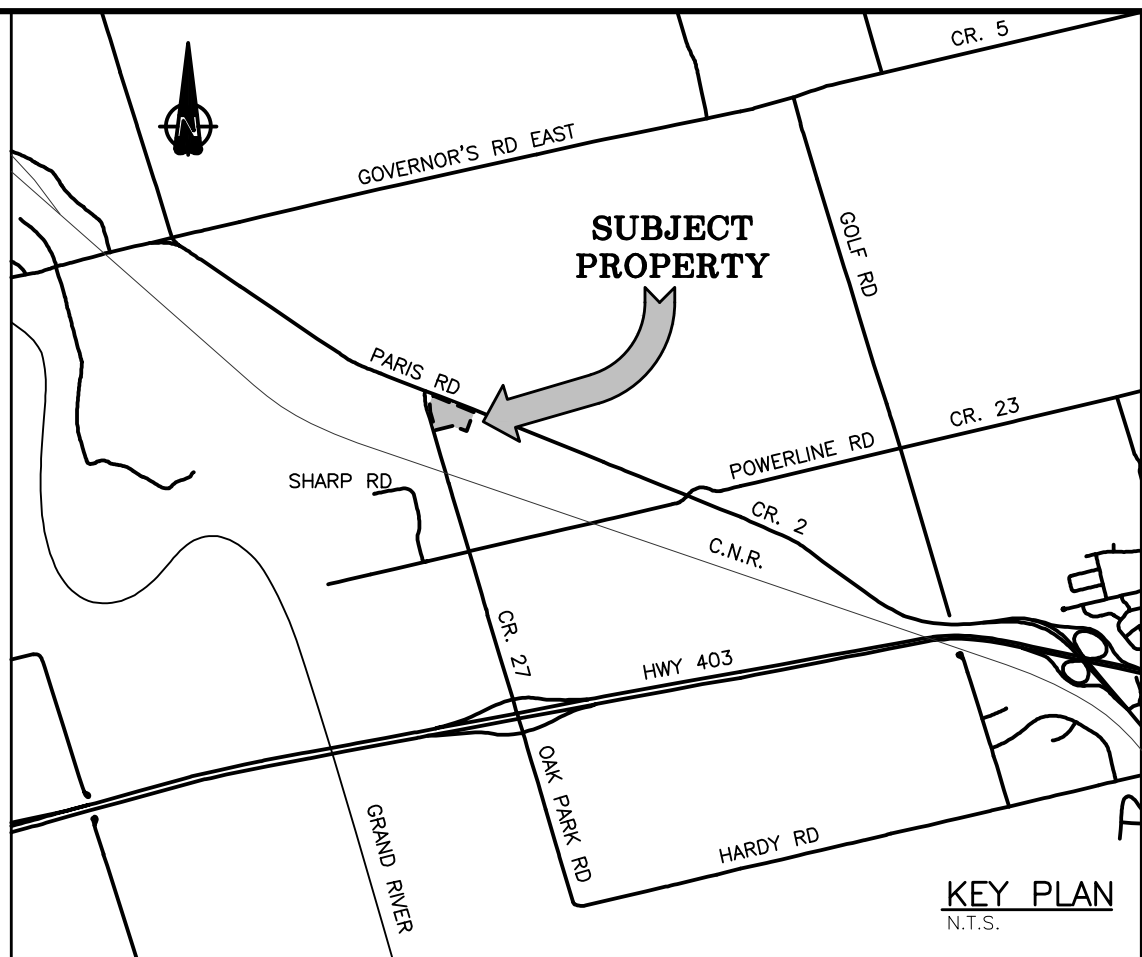


**FIRE ROUTE
SIGN DETAIL**
N.T.S.



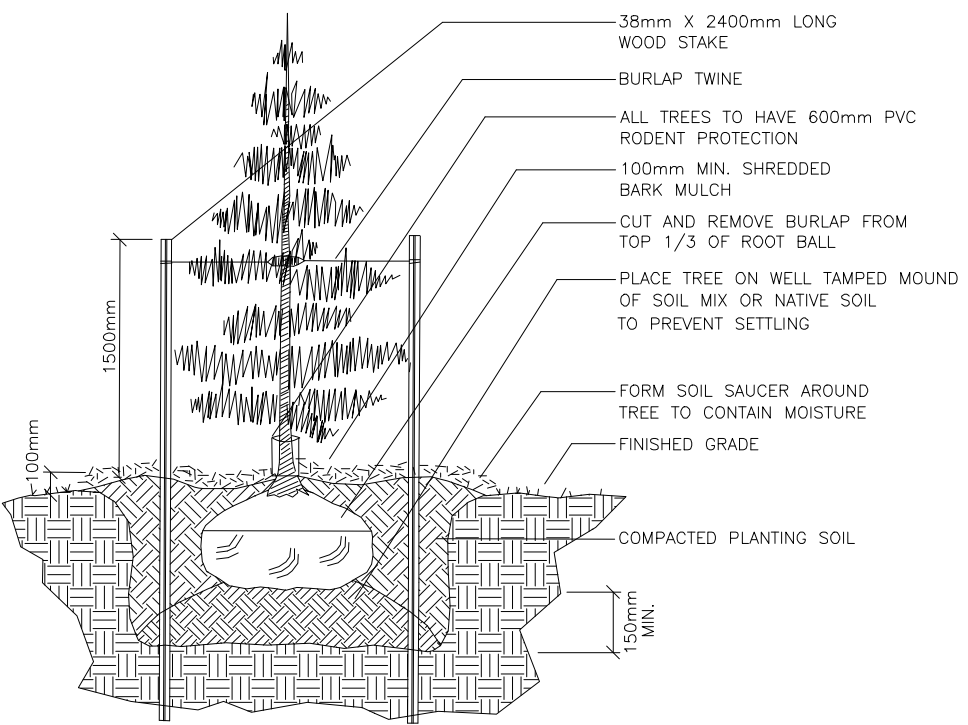
**BARRIER FREE PARKING
SIGN DETAIL**
N.T.S.

PARIS ROAD

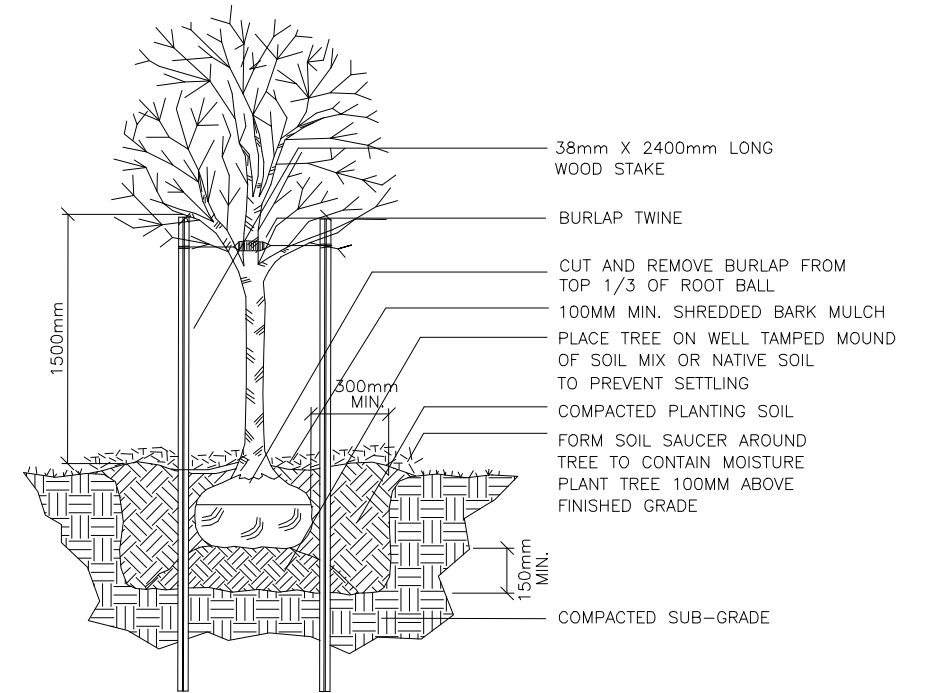


KEY PLAN
N.T.S.

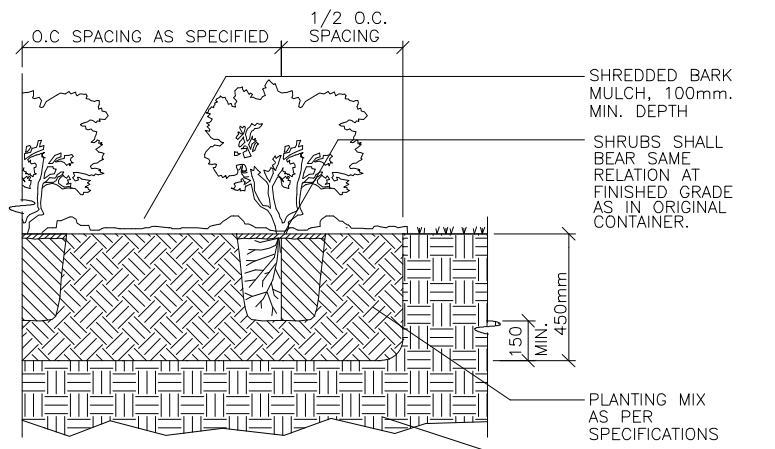
NOTE:
EXISTING 250mmØ WATERMAIN ALONG THE WEST SIDE OF OAK PARK ROAD, PROVIDES SERVING FOR THE SUBJECT LOTS. THE LOCATION OF THE CONNECTION AND DETAILS HAS NOT BEEN PROVIDED. ROAD RESTORATION ON OAK PARK ROAD WILL BE THE RESPONSIBILITY OF THE OWNER AND IS REQUESTED TO BE SHOWN ON THE PLAN, TO THE SATISFACTION OF THE COUNTY.



TYPICAL CONIFEROUS TREE PLANTING
NTS ALL DIMENSIONS IN MILLIMETRES

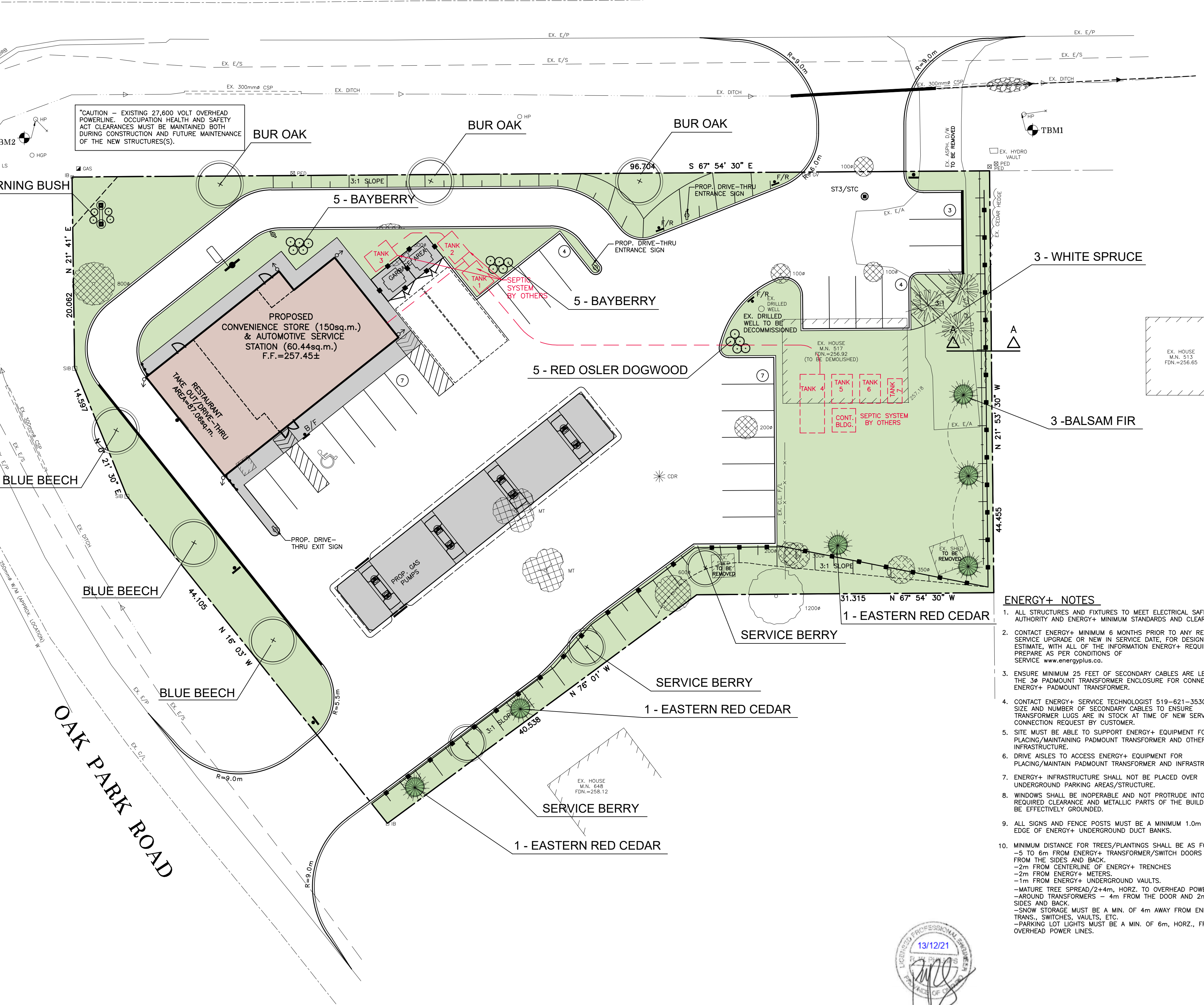


TYPICAL DECIDUOUS TREE PLANTING
NTS ALL DIMENSIONS IN MILLIMETRES



NOTE:
EXCAVATE ENTIRE SHRUB BED AS SHOWN ON DRAWINGS. FOR PLANTS IN FIBRE CONTAINERS, CUT OUT BOTTOM AND SLIT SIDE BEFORE PLANTING. PLASTIC POT TO BE REMOVED COMPLETELY. CUT AWAY TOP 1/3 OF BURLAP AND AND ROPE ON BAB PLANT AND REMOVE WITHOUT DISTURBING ROOT BALL. PRUNE AS PER STANDARD HORTICULTURAL PRACTICE. REMOVE RUBBING AND/OR BROKEN BRANCHES. NURSERY TAGS, PLASTIC OR METAL, DO NOT TOP PRUNE.

TYPICAL SHRUB PLANTING
NTS ALL DIMENSIONS IN MILLIMETRES



ENERGY+ NOTES:

1. ALL STRUCTURES AND FIXTURES TO MEET ELECTRICAL SAFETY AUTHORITY AND ENERGY+ MINIMUM STANDARDS AND CLEARANCES.
2. CONTACT ENERGY+ MINIMUM 6 MONTHS PRIOR TO ANY RELOCATIONS, SERVICE UPGRADE OR NEW IN SERVICE DATE, FOR DESIGN AND ESTIMATE, WITH ALL OF THE INFORMATION ENERGY+ REQUIRES TO PREPARE AS PER CONDITIONS OF SERVICE. www.energyplus.co.
3. ENSURE MINIMUM 25 FEET OF SECONDARY CABLES ARE LEFT INSIDE THE 3Ø PADMOUNT TRANSFORMER ENCLOSURE FOR CONNECTION TO ENERGY+ PADMOUNT TRANSFORMER.
4. CONTACT ENERGY+ SERVICE TECHNOLOGIST 519-621-3530 WITH SIZE AND NUMBER OF SECONDARY CABLES TO ENSURE TRANSFORMER LUGS ARE IN STOCK AT TIME OF NEW SERVICE CONNECTION REQUEST BY CUSTOMER.
5. SITE MUST BE ABLE TO SUPPORT ENERGY+ EQUIPMENT FOR PLACING/MAINTAINING PADMOUNT TRANSFORMER AND OTHER INFRASTRUCTURE.
6. DRIVE AISLES TO ACCESS ENERGY+ EQUIPMENT FOR PLACING/MAINTAIN PADMOUNT TRANSFORMER AND INFRASTRUCTURE.
7. ENERGY+ INFRASTRUCTURE SHALL NOT BE PLACED OVER UNDERGROUND PARKING AREAS/STRUCTURE.
8. WINDOWS SHALL BE INOPERABLE AND NOT PROTRUDE INTO THE REQUIRED CLEARANCE AND METALLIC PARTS OF THE BUILDING SHALL BE EFFECTIVELY GROUNDING.
9. ALL SIGNS AND FENCE POSTS MUST BE A MINIMUM 1.0m FROM EDGE OF ENERGY+ UNDERGROUND DUCT BANKS.
10. MINIMUM DISTANCE FOR TREES/PLANTINGS SHALL BE AS FOLLOWS:
-5 to 6m FROM ENERGY+ TRANSFORMER/SWITCH DOORS AND 2m FROM THE SIDES AND BACK.
-2m FROM CENTERLINE OF ENERGY+ TRENCHES
-2m FROM ENERGY+ METERS.
-1m FROM ENERGY+ UNDERGROUND VAULTS.
-MATURE TREE SPREAD/2+4m, HORIZ. TO OVERHEAD POWERLINES.
-AROUND TRANSFORMERS - 4m FROM THE DOOR AND 2m AROUND SIDES AND BACK.
-SNOW STORAGE MUST BE A MIN. OF 4m AWAY FROM ENERGY+ TRANS., SWITCHES, VAULTS, ETC.
-PARKING LOT LIGHTS MUST BE A MIN. OF 6m, HORIZ., FROM EX. OVERHEAD POWER LINES.

LEGEND:

- PROPOSED AREA TO BE SODDED
- PROPOSED DECIDUOUS TREES
- PROPOSED CONIFEROUS TREES
- PROPOSED SHRUBS
- PROPOSED CONIFEROUS SHRUBS
- EXISTING TREES TO REMAIN
- EXISTING TREES TO BE REMOVED
- PROPOSED FIRE ROUTE SIGNS
- PROPOSED BARRIER FREE PARKING SIGNS
- PROPOSED STOP SIGNS

LANDSCAPE NOTES:

1. BASE INFORMATION OBTAINED FROM 9266-1.DWG SUPPLIED BY J.H. COHOON ENGINEERING LIMITED.
2. THE LANDSCAPE CONTRACTOR SHALL VERIFY ALL CONDITIONS IN THE FIELD AND REPORT ANY DISCREPANCIES TO THE LANDSCAPE ARCHITECT PRIOR TO CONSTRUCTION.
3. LIMIT OF WORK TO BE THE PROPERTY LINE SHOWN.
4. ANY AREAS OUTSIDE THE LIMIT OF WORK DAMAGED BY THE CONTRACTOR SHALL BE RESTORED BY THE CONTRACTOR TO CITY OF BRANTFORD STANDARDS AT NO ADDITIONAL COST TO THE OWNER.
5. ALL UNDERGROUND UTILITIES TO BE LOCATED BY THE LANDSCAPE CONTRACTOR PRIOR TO THE COMMENCEMENT OF ANY WORK.
6. ALL DIMENSIONS ARE IN METRES.
7. ALL PLANT MATERIAL TO BE NO. 1 GRADE, NURSERY GROWN IN ACCORDANCE WITH THE CANADIAN NURSERY TRADES ASSOCIATION.
8. PLANT MATERIAL QUANTITIES ON THE DRAWING SHALL TAKE PRECEDENT OVER THOSE IN THE PLANT LIST.
9. THE PLANTING PLAN IS TO BE READ IN CONJUNCTION WITH THE SITE PLAN (9266-1).
10. ANY PLANT MATERIAL WHICH COMES OVER OR UNDER ANY UTILITY WILL BE RELOCATED AS DIRECTED BY THE LANDSCAPE ARCHITECT.
11. SUPPLY & INSTALL A SHREDDED BARK MULCH ON ALL PLANTING BED TO BE A 100mm DEPTH.

T.B.M. No. 1 ELEV. = 256.41m (GEO)

NAIL ON SIDE OF HYDRO POLE @ NORTH EAST CORNER OF PROPERTY AS SHOWN.

T.B.M. No. 2 ELEV. = 257.63m (GEO)

NAIL ON SIDE OF HYDRO POLE @ NORTH WEST CORNER OF PROPERTY AS SHOWN.

NO.	REVISION	DATE (MM/DD/YY)	BY
8	AS PER COUNTY COMMENTS	12/13/21	S.L.M.
7	AS PER COUNTY COMMENTS	09/29/21	S.L.M.
6	AS PER COUNTY COMMENTS	04/22/21	S.L.M.
5	ORIFICE PLATES/PONDING	11/13/18	S.L.M.
4	SEPTIC SYSTEM BY OTHERS	09/06/17	S.L.M.
3	REMOVE SIDEWALK @ LOADING	05/29/17	S.L.M.
2	UPDATE SITE STAT'S	05/12/17	S.L.M.
1	TDL STANDARDS	06/28/16	S.L.M.

**J.H. COHOON
ENGINEERING
LIMITED**
CONSULTING ENGINEERS

440 HARDY ROAD - UNIT #1 - BRANTFORD - ONTARIO - N3T 5L8
TEL. (519) 753-2656 FAX. (519) 753-4263 www.cohooneng.com

PROJECT:

**PROPOSED COMMERCIAL
DEVELOPMENT**
PART OF LOT 19, CONCESSION 1
M.N. 517 PARIS ROAD
COUNTY OF BRANT

CUSTOMER:

JOHN DANG

LANDSCAPE PLAN

DESIGN:	R.W.P.	SCALE:	1:250
DRAWN:	S.L.M.	JOB No:	9266
CHECKED:	R.W.P.	DWG. No:	9266-3
SHEET:	3 of 3		
DATE:	MAR. 9, 2017		