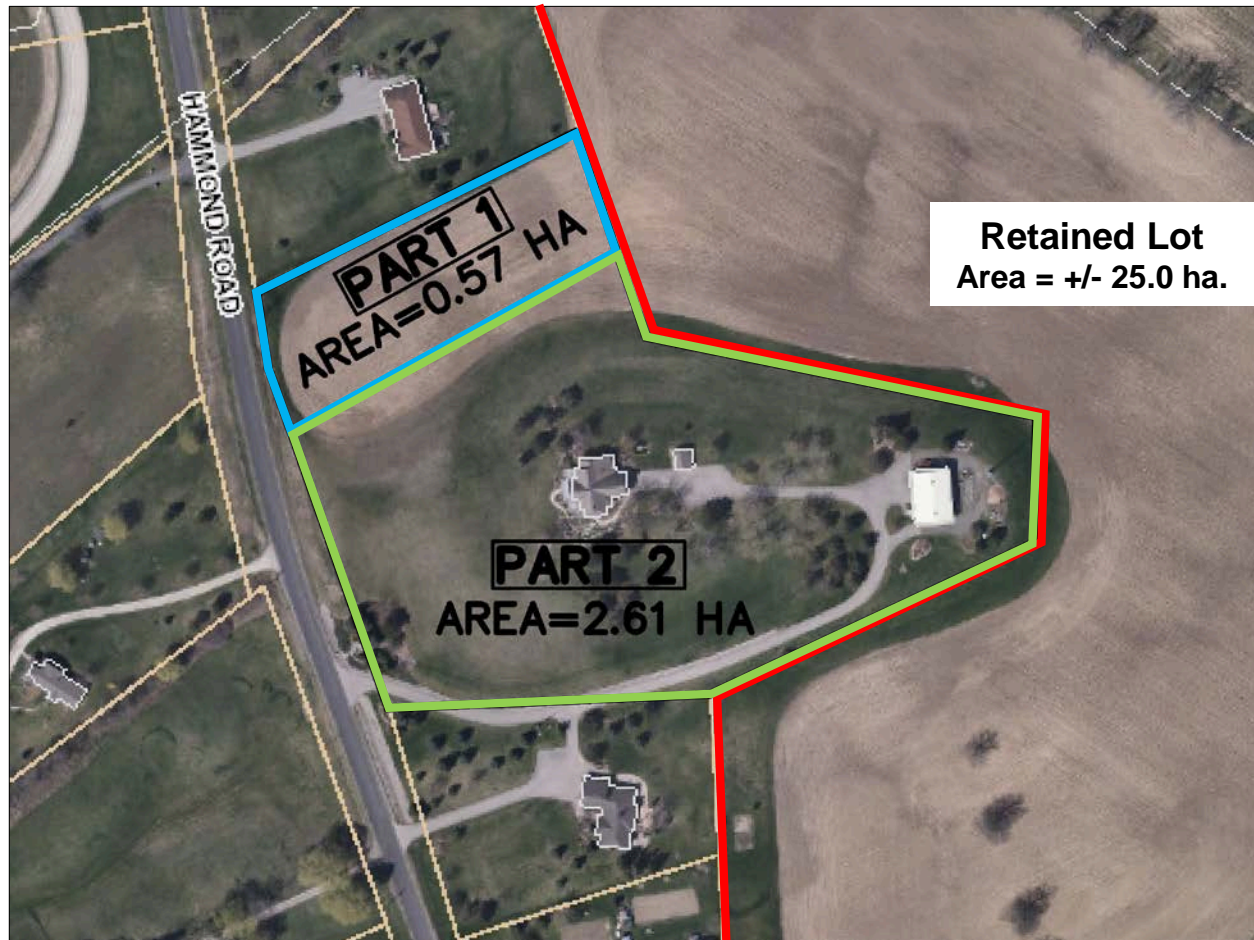


Original Plan

&

Revised Plan (Conceptual)

Part 1: +/- 0.57 ha.
Part 2: +/- 2.61 ha.
Retained Lot: +/- 25.0 ha.



Part 1: +/- 0.67 ha.
Part 2: +/- 2.51 ha.
Retained Lot: +/- 25.0 ha.

