

BY-LAW NUMBER 38-14

- of -

THE CORPORATION OF THE COUNTY OF BRANT

To amend By-law Number 110-01, the Zoning By-law for the County of Brant, as amended (Gillis, 240 Bethel Road, geographic Township of Brantford).

WHEREAS an application was received from Waterous, Holden, Amey, & Hitchon, agent for Glenn & Julie Gillis, applicants/owners of land described as Part Lots 3 & 4, Concession 3, geographic Township of Brantford, County of Brant, and located at 240 Bethel Rd., to amend By-law Number 110-01, to change the present Agricultural (A) zone to Special Exception Agricultural (A-9) to prohibit a dwelling;

AND WHEREAS the *Planning Act* empowers a municipality to pass by-laws prohibiting the use of land and the erection, location and use of buildings or structures, except as set out in the by-law;

AND WHEREAS this by-law is in conformity with the Official Plan for the County of Brant;

AND WHEREAS the Planning Advisory Committee of the Corporation of the County of Brant has recommended approval of this by-law;

AND WHEREAS the Council of the Corporation of the County of Brant deems it to be desirable for the future development and use of the lands described above;

NOW THEREFORE THE COUNCIL OF THE CORPORATION OF THE COUNTY OF BRANT HEREBY ENACTS as follows:

1. **THAT** Schedule 'A', Key Map 44 & 45 of By-law Number 110-01 is hereby amended by changing the zoning on the subject lands from Agricultural (A) to Special Exception Agricultural (A-9) as shown on Schedule "A" of this by-law.
2. **THAT** this by-law shall come into force on the day it is passed by the Council of the Corporation of the County of Brant.

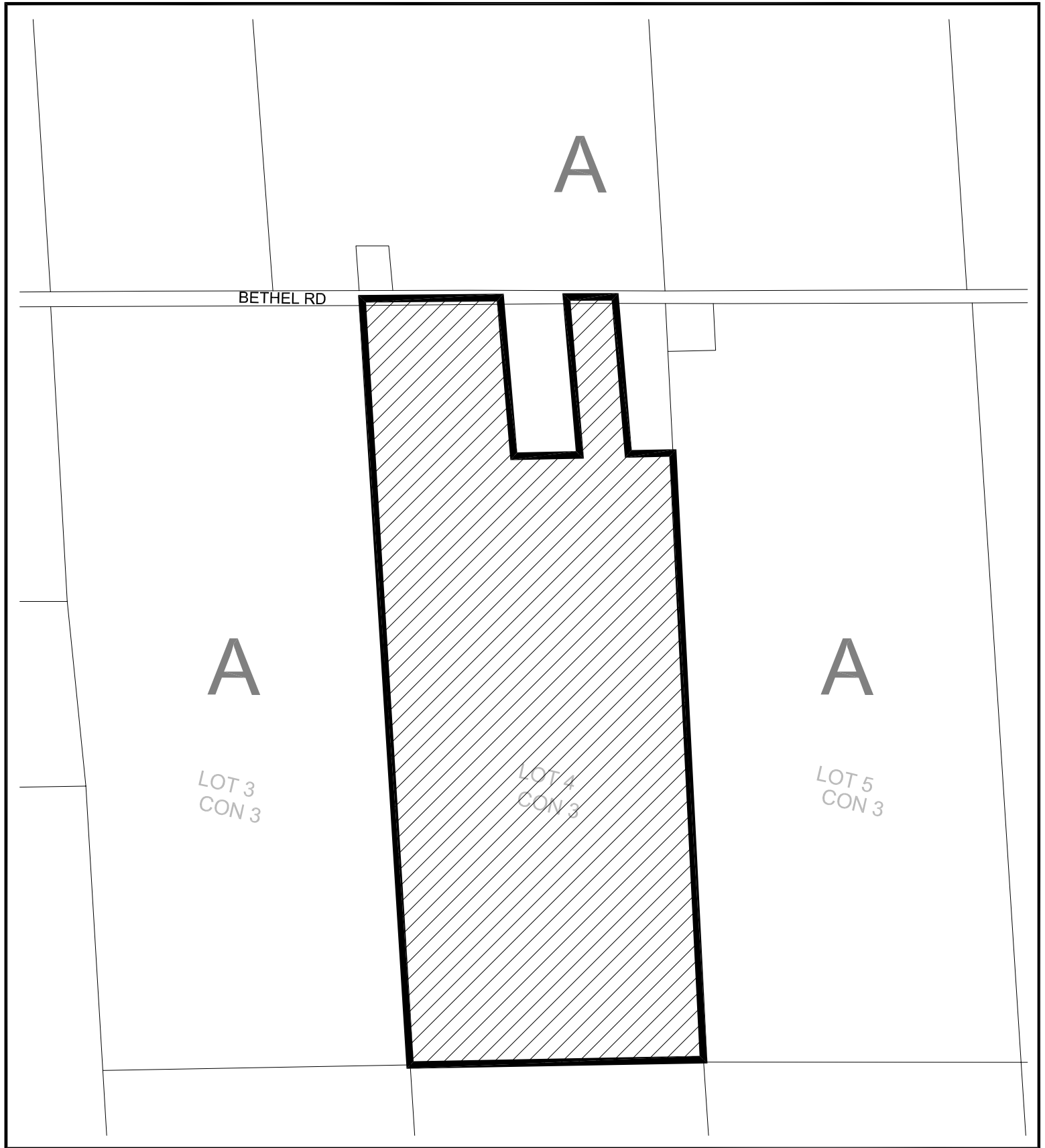
READ a first and second time, this 25th day of March, 2014.

READ a third time and finally passed in Council, this 25th day of March, 2014.

THE CORPORATION OF THE COUNTY OF BRANT

Ron Eddy, Mayor

Heather Boyd, Clerk



SCHEDULE 'A'
COUNTY OF BRANT
 to BY-LAW No. 38-14



- from A to A-9

(ZBL 110-01, ZBA2-14-MD)